



Board Report Briefing

Subway Closures and Streetcar Diversions - 2023 Review and 2024/2025 Forecast

January 25, 2024

Fort Monaco – Chief Operations & Infrastructure Officer

| Overview



Why are closures needed?



Benefits of closures



2023 subway and streetcar closure achievements



2024/2025 subway and streetcar closure forecast



| Why Are Closures Needed?

5

Weeks of
night work

>

Maintenance
windows

<

Disruption
for the public

Benefits of Closures – Asset Reliability

	2019 YTD	VS.	2023
Switch Failure Incidents	116	↓ 41%	82
Insulated Joint Failure Incidents	25	↓ 64%	9
Signal Related Failure Incidents	52	↓ 35%	34

Note: 2023 Year to Date (YTD) from P1 to P11

	2021	VS.	2023 YTD
Delay Incidents due to ADD (Automatic Drop Down)	117	↓ 26%	86



Benefits of Closures – Support Improvements

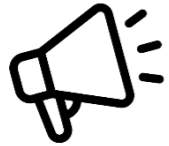
Expansion and Modernization

- Scarborough Subway Extension
- Ontario Line
- Eglinton Crosstown LRT
- Easier Access
- Cellular and 5G Connectivity (Rogers)



Informing Customers of Upcoming Closures

Inform



Station and vehicle announcements



Twitter updates and support



Platform screen updates (shared with TC)



Website updates – live service alerts and E-alerts



Media updates – news releases and social media

Supports



Operating accessible shuttle buses



Priority traffic signals for shuttle buses



Respond to customer enquiries

ECE – Station Finishes (Queen’s Park & St Patrick Stations)

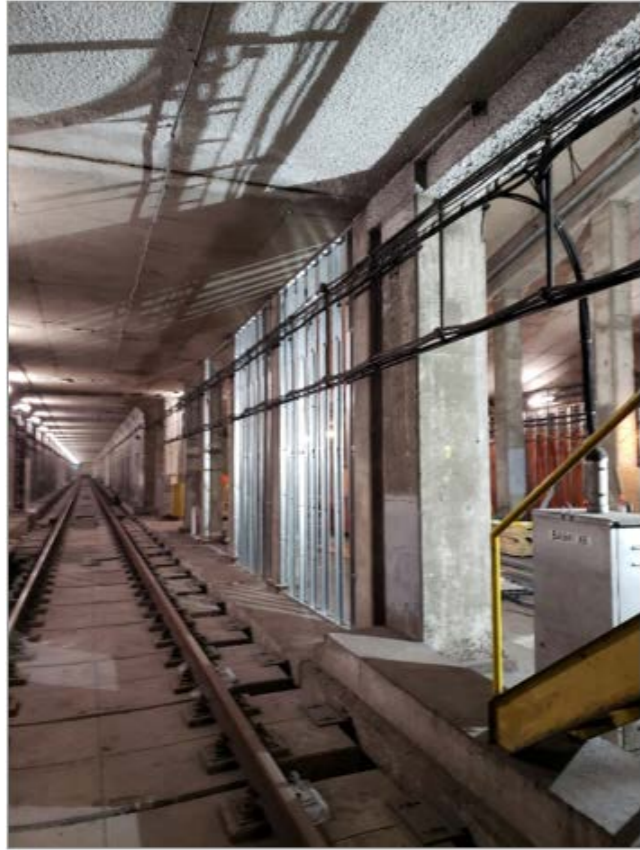


New light fixture installation



Installation of upper and middle L-brackets

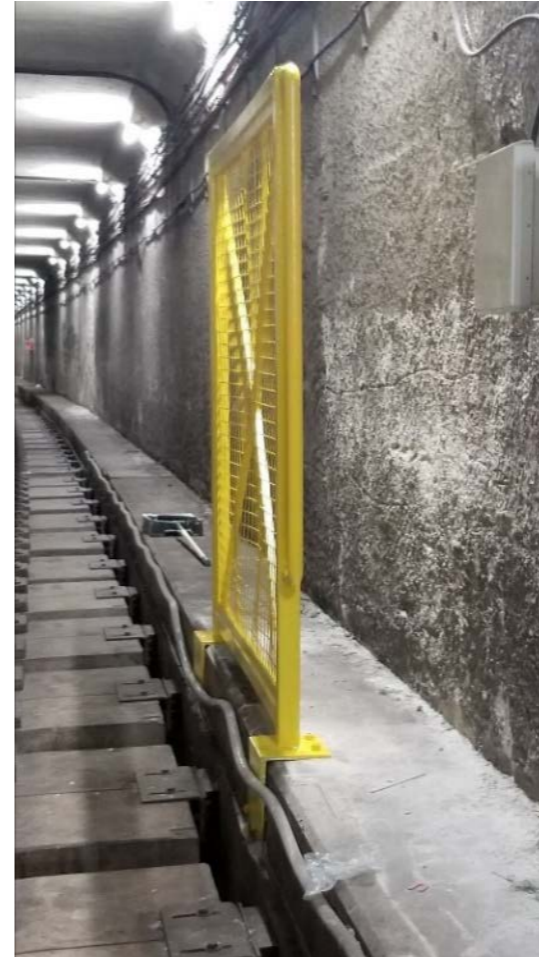
ECE – Scarborough Subway Extension (Kennedy Station)



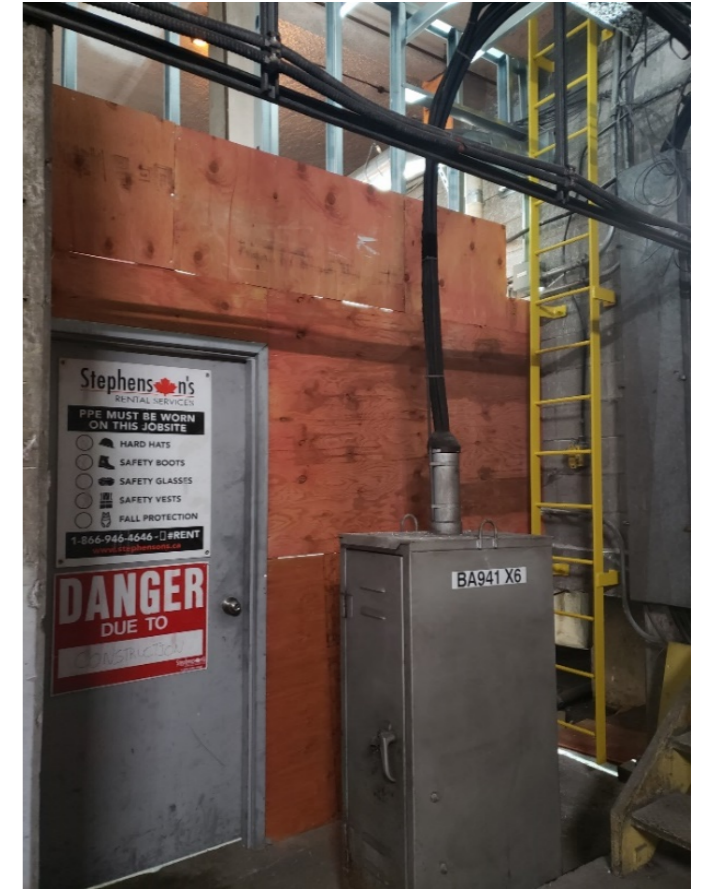
Hoarding installation
at Kennedy tail track



Door opening



Refuge cage installation



Ladder to Mezzanine level
installation

Capital Projects



Russell Yard track overhaul



Gerrard and Coxwell intersection track replacement



Broadview (Danforth to Gerrard) wire replacement; tangent track replacement



2024 Subway Closures Line 1

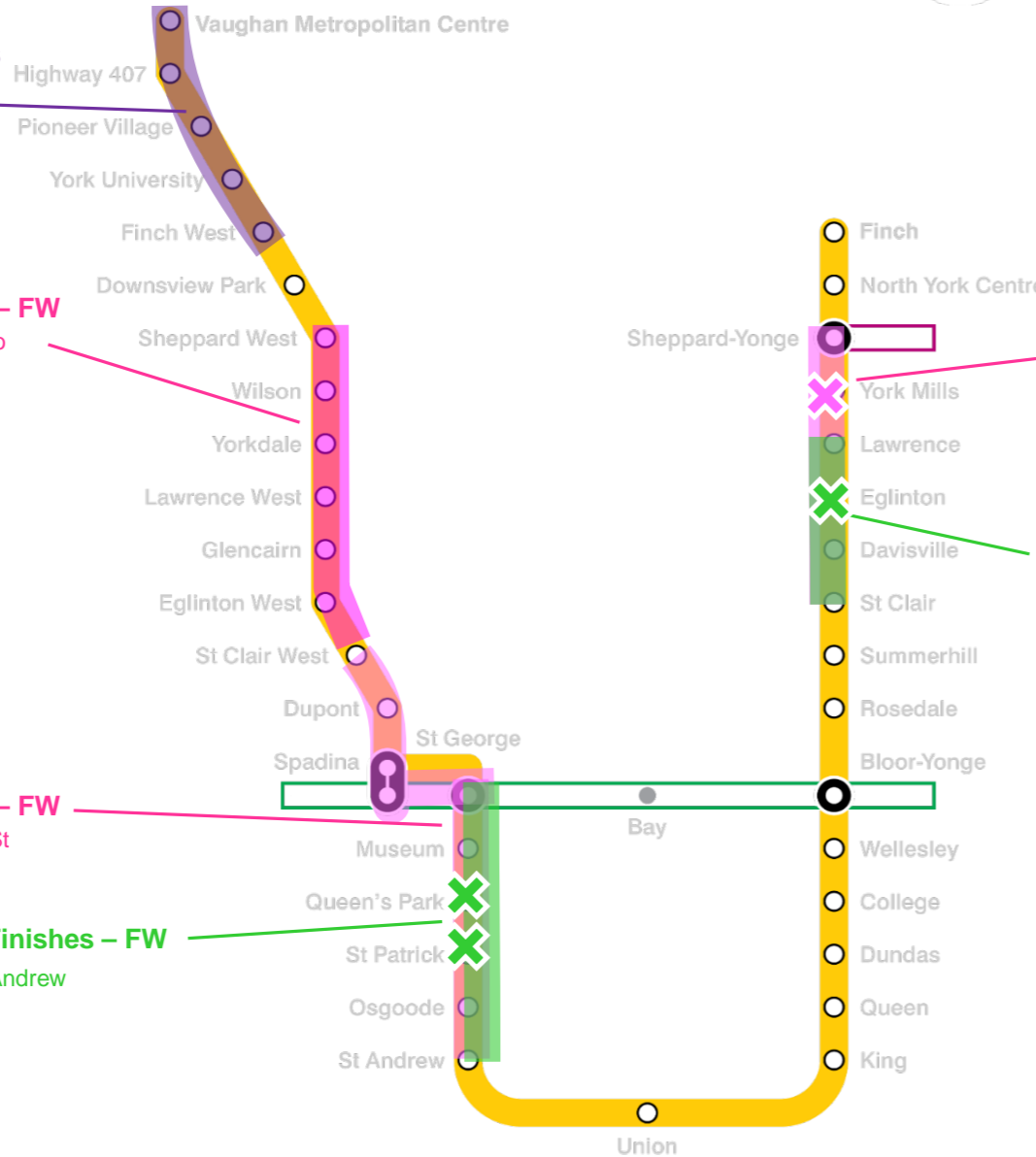


L SOGR & Other Works - SLO
Vaughan Metropolitan Centre to Finch West

S SOGR Track Maintenance - FW
Sheppard West to St Clair West

S SOGR Track Maintenance - FW
St Clair West to St Andrew

E ECE Station Finishes - FW
St George to St Andrew



CLOSURE TYPE	SOGR	ECE	Easier Access	ECLRT	TOTAL
FW	4	3		1	8
EA	107		8		115 nights
SLO	55				55 nights

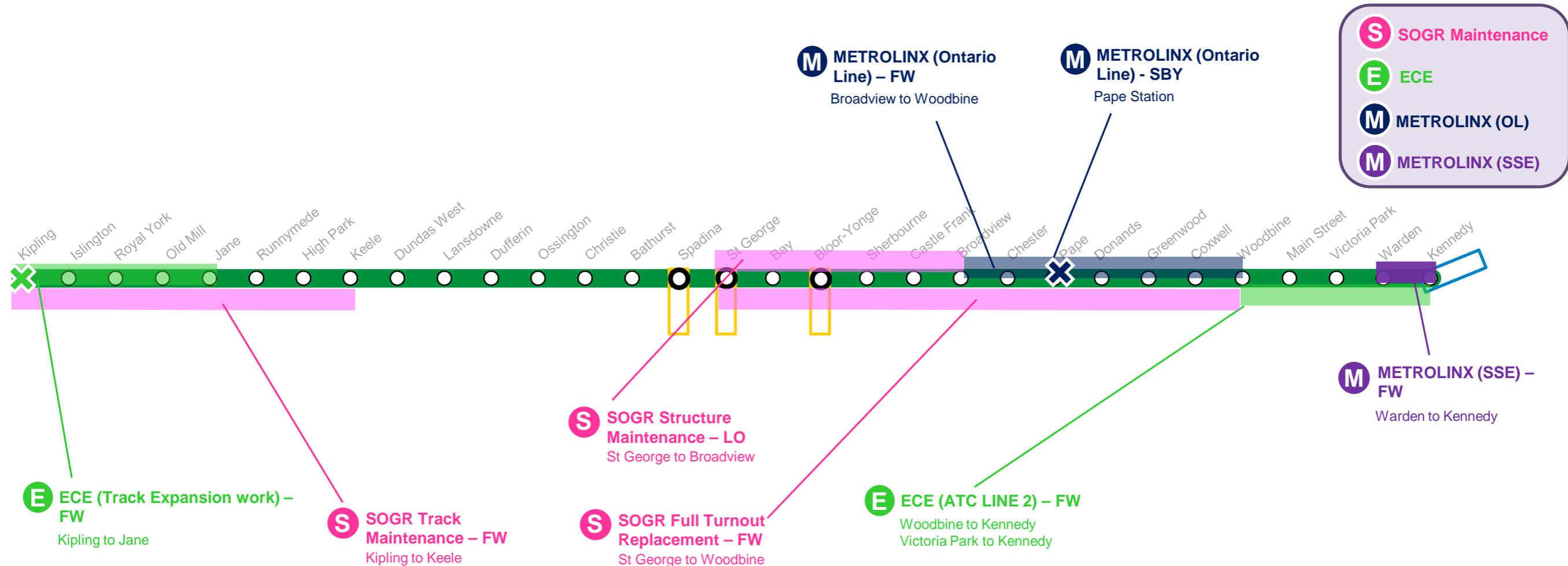
S SOGR Maintenance
E ECE

Type of Closures
 FW = Full Weekend Closure
 EA = Early Access Closure
 LO = Late Opening
 SBY = Station Bypass
 SLO = Single Line Operation



2024 Subway Closures Line 2

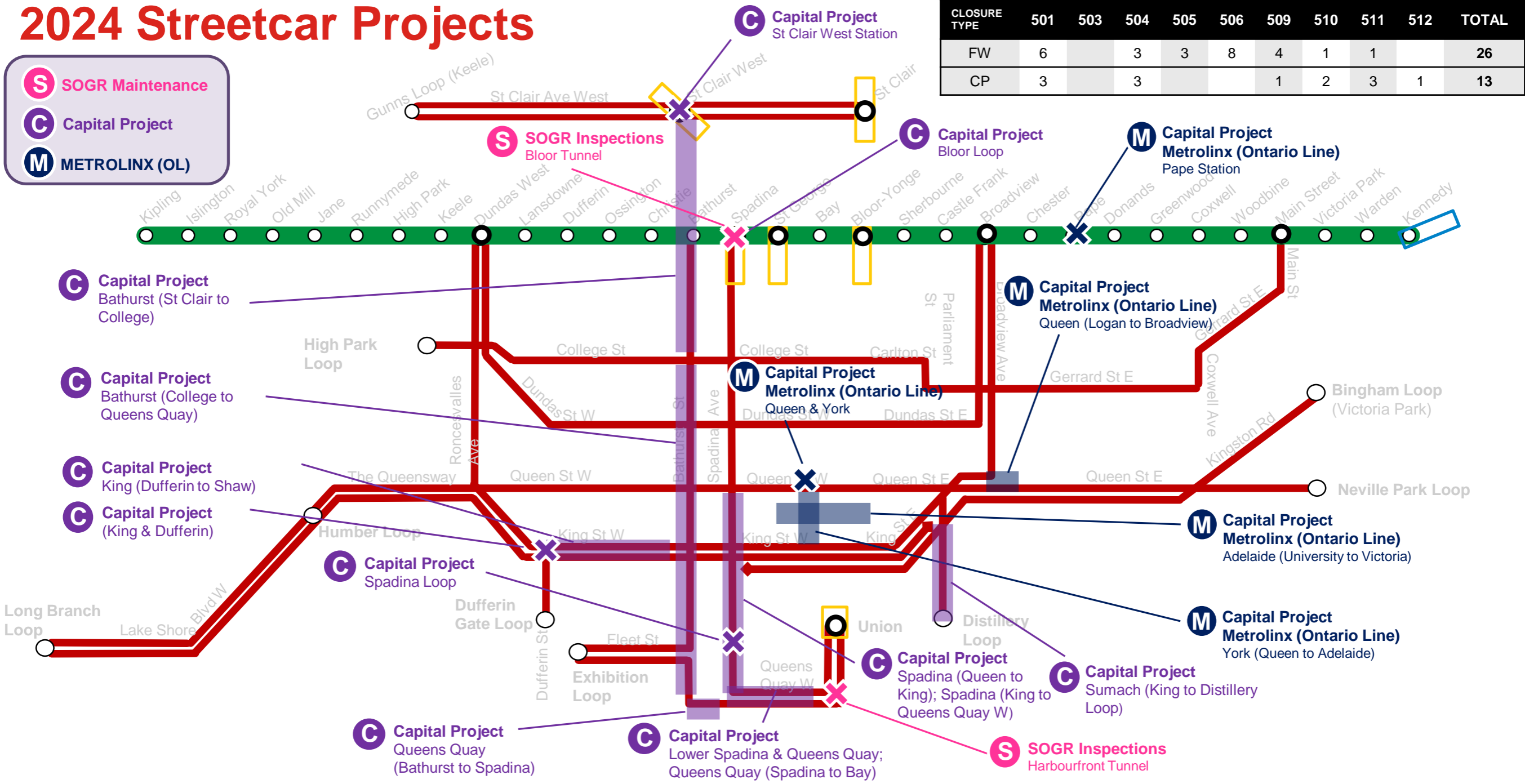
CLOSURE TYPE	SOGR	ECE	ATC	MX (OL)	MX (SSE)	TOTAL
FW	3	2	1	3	5	14
EA	58				5	63 nights
LO	8					8
SBY				8		8 days



2024 Streetcar Projects

CLOSURE TYPE	501	503	504	505	506	509	510	511	512	TOTAL
FW	6		3	3	8	4	1	1		26
CP	3		3			1	2	3	1	13

- S** SOGR Maintenance
- C** Capital Project
- M** METROLINX (OL)



2025 Subway Closures and Streetcar Diversions Forecast



1	State of Good Repair	-
	Subway Ventilation Equipment Replacement	1
	Davisville Carhouse DC feeder upgrade; Davisville yard train entry platforms	6
	Automatic Train Control	-
	Metrolinx (Ontario Line)	-
	Metrolinx (Scarborough Subway Extension)	-
2	State of Good Repair	5
	Subway Ventilation Equipment Replacement	1
	Automatic Train Control	4
	Metrolinx (Ontario Line)	1
	Metrolinx (Scarborough Subway Extension)	4

22

	Weekend Closure	Capital Project
501		1
503		-
504		3
505		1
506		6
509		-
510		-
511		1
512		-

8

12



Key Recommendations

Endorse the 2024 Subway Closure Forecast and the 2024 Streetcar Diversion Forecast

	Line	State of Good Repair	Station Finishes	Kipling Track Expansion	Eglinton Crosstown LRT	Automatic Train Control	Ontario Line	Scarborough Subway Extension	
Weekend Closure	1	4	3	-	1	-	-	-	8
	2	3	-	2	-	1	3	5	14
Early Weeknight Closure	1	107	8		-	-	-	-	115 nights
	2	58	-		-	-	-	5	63 nights
Single Line Operation	1	55	-		-	-	-	-	55 nights
Late Opening	2	8	-		-	-	-	-	8
Station Bypass	1	-	-		-	-	8	-	8 days



Key Recommendations Continued

Endorse the 2024 Streetcar Closure Forecast

	LINE	State of Good Repair	Ontario Line	SOGR Carstops	SOGR Inspections	SOGR Rail Repair	SOGR Intersection Overhaul	SOGR Margin Repair	
Capital Project	501 Queen	-	3	-	-	-	-	-	3
	504 King	3	-	-	-	-	-	-	3
	509 Harbourfront	1	-	-	-	-	-	-	1
	510 Spadina	2	-	-	-	-	-	-	2
	511 Bathurst	3	-	-	-	-	-	-	3
	512 St Clair	1	-	-	-	-	-	-	1
Full Diversion	501 Queen	-	2	1	-	2	-	1	6
	504 King	-	-	2	-	-	1	-	3
	505 Dundas	-	-	-	-	1	1	1	3
	506 Carlton	1	-	4	-	2	-	1	8
	509 Harbourfront	-	-	-	4	-	-	-	4
	510 Spadina	-	-	-	1	-	-	-	1
	511 Bathurst	-	-	-	-	-	1	-	1
									13
									26

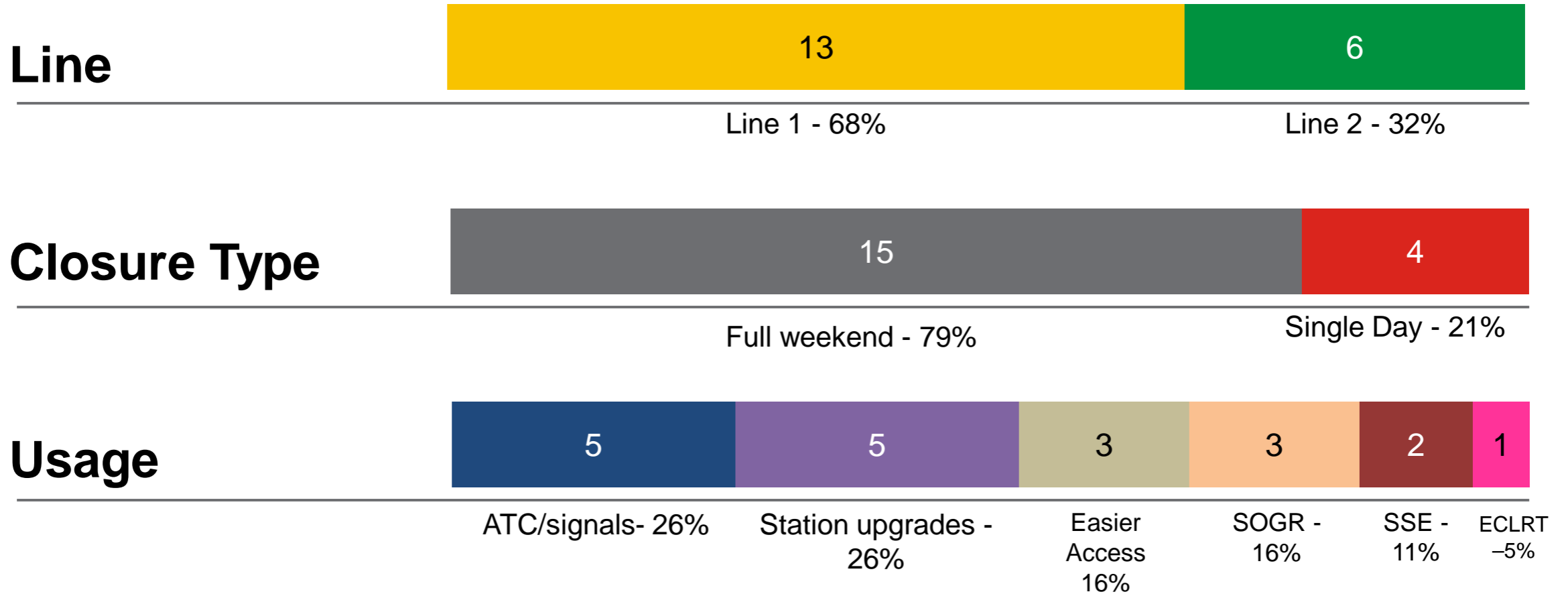




2023 Subway Closures Stats



19 Closures:



Note: Closure stats above not inclusive of Early Access (EA) and Late Opening (LO) closures



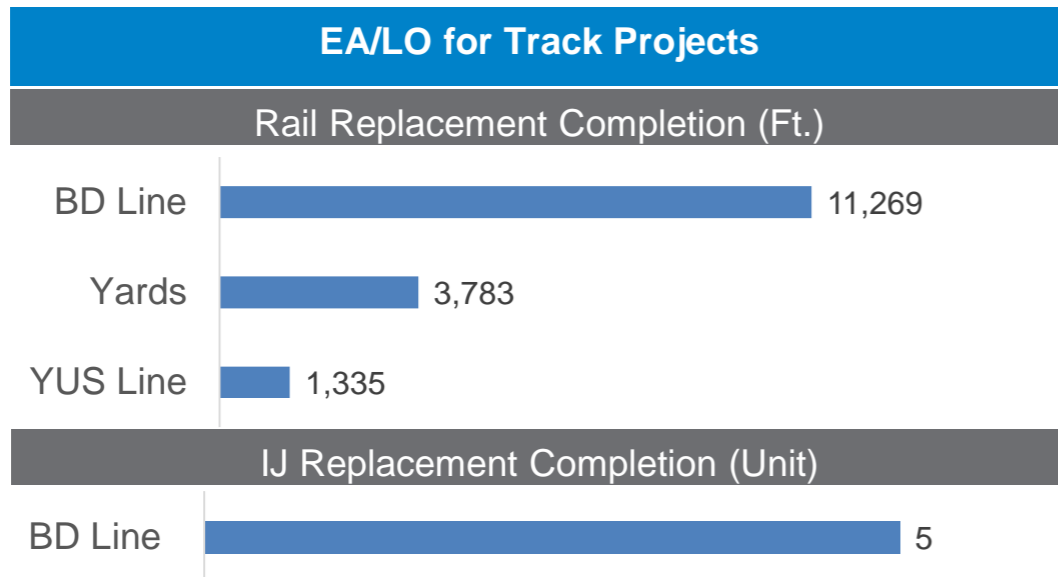
2023 Subway Closures Achievements



Highlights:

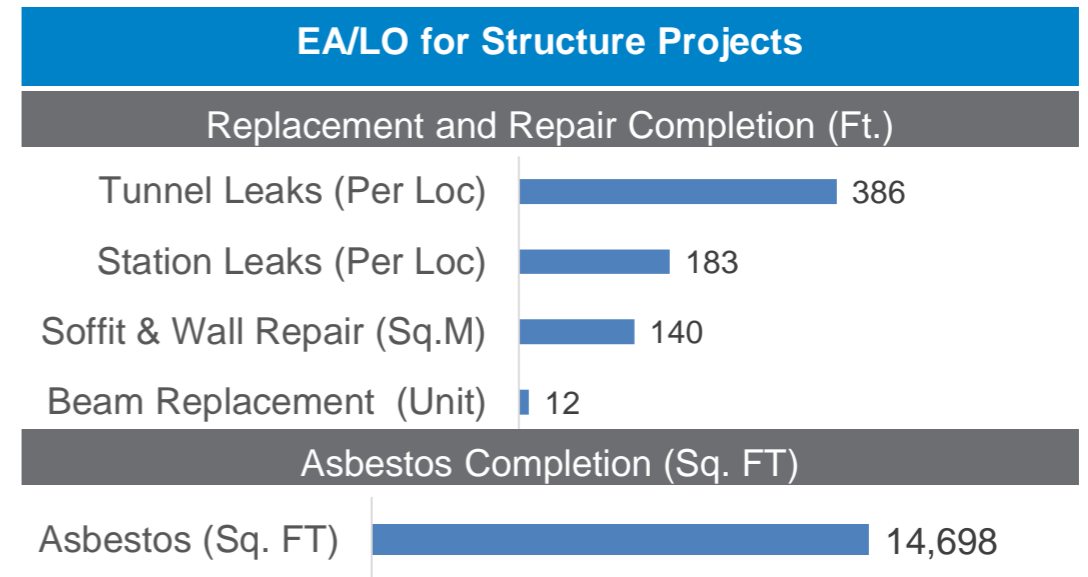
70 days

EA/LO for Track Projects



36 days

EA/LO for Structure Projects



2023 versus 2024 Full weekend Subway Closures

		2023	2024
		Actual	Planned
1	State of Good Repair	1	4
	Engineering, Construction & Expansion	3	3
	Easier Access	3	-
	Eglinton Crosstown Light Rail Transit	1	1
	Automatic Train Control	1	-
	Metrolinx (Ontario Line)	-	-
	Metrolinx (Scarborough Subway Extension)	-	-
2	State of Good Repair	1	3
	Engineering, Construction & Expansion	1	2
	Easier Access	-	-
	Eglinton Crosstown Light Rail Transit	-	-
	Automatic Train Control	2	1
	Metrolinx (Ontario Line)	-	3
	Metrolinx (Scarborough Subway Extension)	2	5
		15	22



2025 Subway Closures Line 1

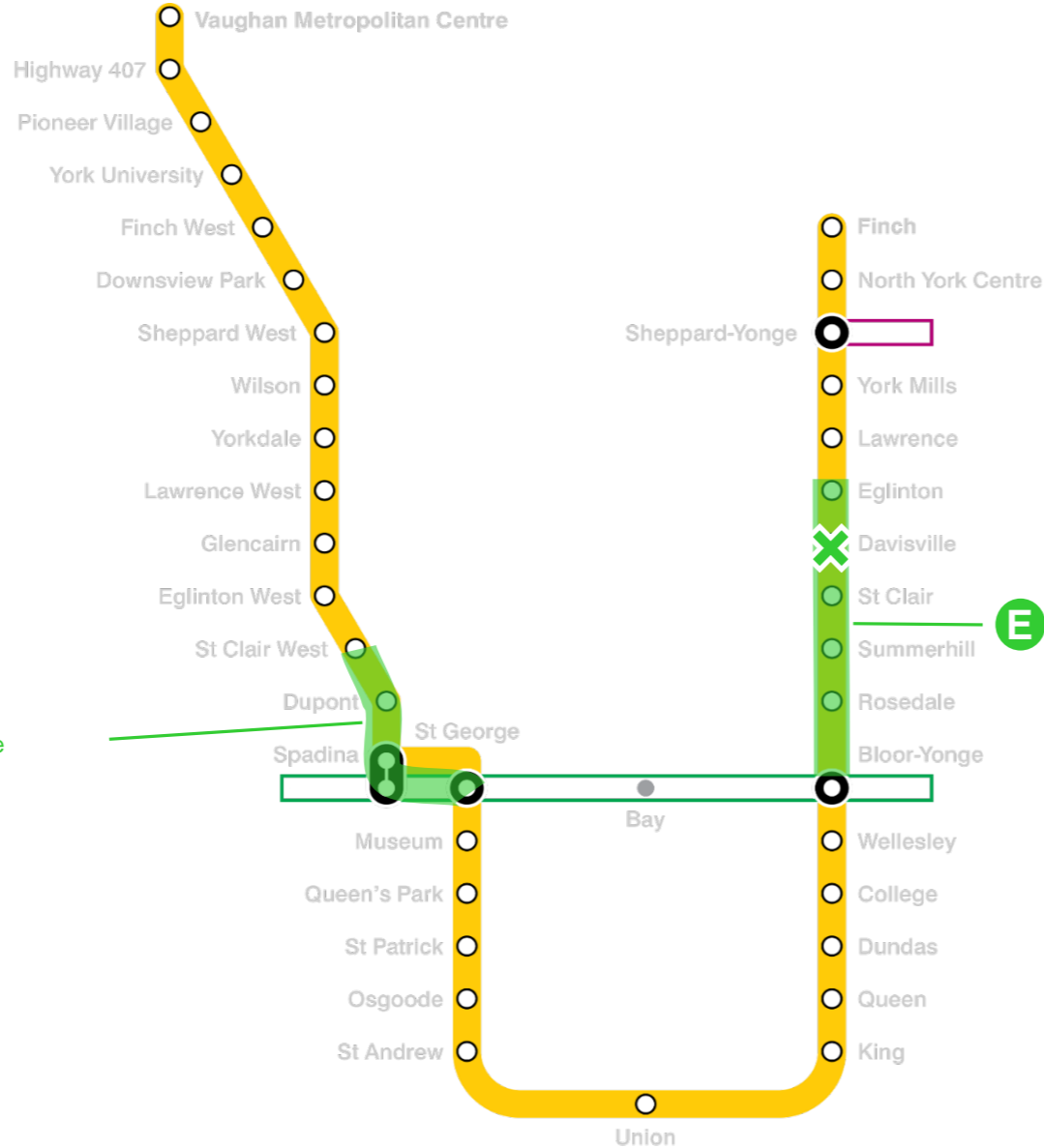


CLOSURE TYPE	SOGR	ECE	Easier Access	YNSE	TOTAL
FW		7			7

S SOGR Maintenance
E ECE

E ECE Construction
 St Clair West to St George

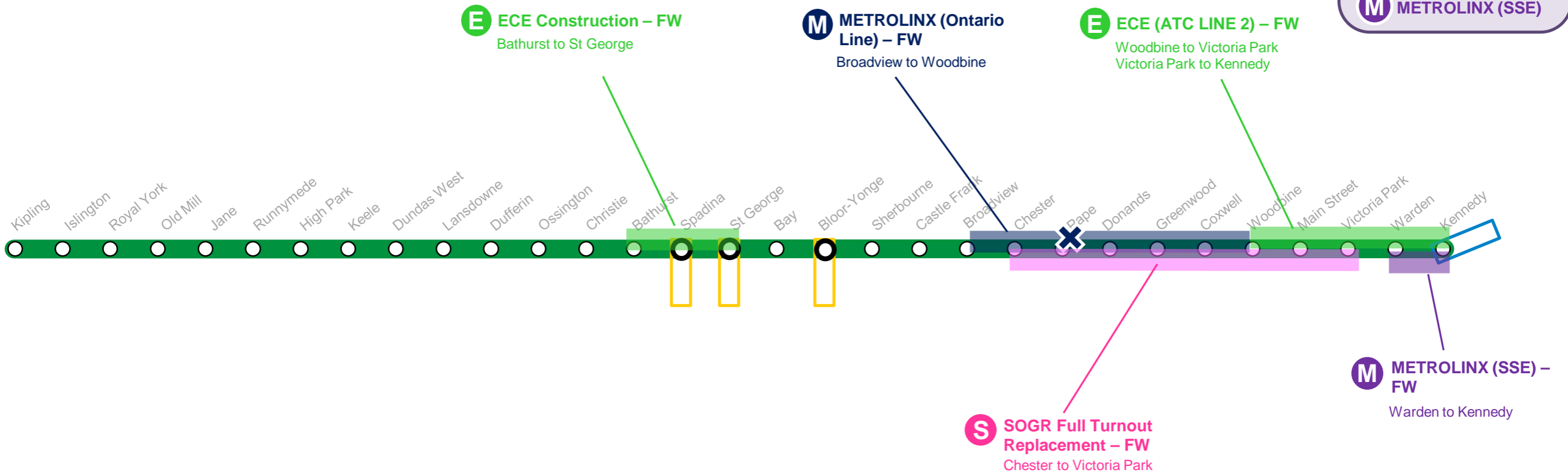
E ECE Construction
 Eglinton to Bloor



2025 Subway Closures Line 2

CLOSURE TYPE	SOGR	ECE	ATC	MX (OL)	MX (SSE)	TOTAL
FW	5	1	4	1	4	15

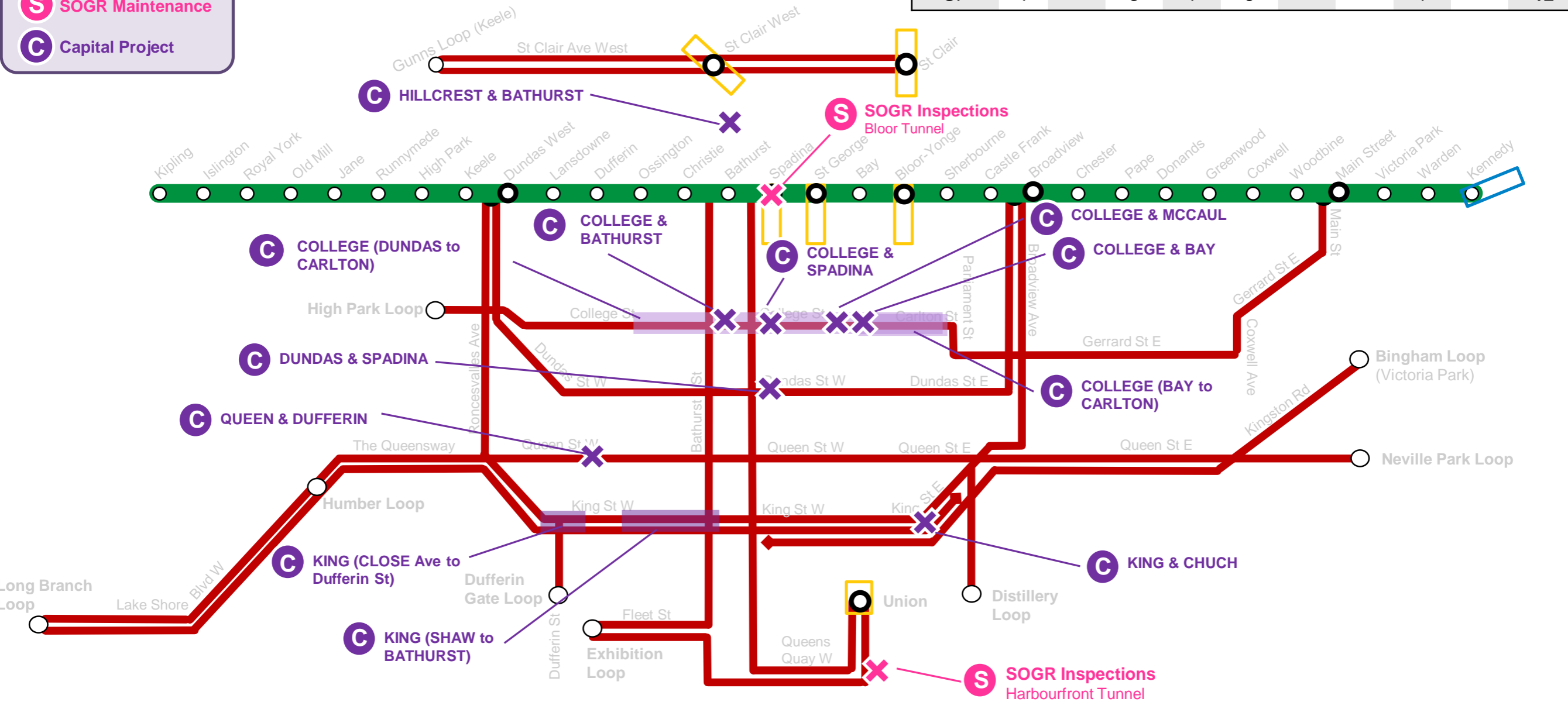
- S SOGR Maintenance
- E ECE
- M METROLINX (OL)
- M METROLINX (SSE)



2025 Streetcar Projects

CLOSURE TYPE	501	503	504	505	506	509	510	511	512	TOTAL
FW										8
CP	1		3	1	6			1		12

S SOGR Maintenance
C Capital Project



Appendix 1 – 2024 Subway Closure Forecast

Closure Start Date	Closure End Date	Type of Closure	Section	Project Type	Closure Description	Shuttle Bus Service
13-Jan	15-Jan	FW	EC&E	Station Finishes	Station Finish - Porcelain enamel panels installation (St Patrick to Museum)	St George to St Andrew
15-Jan	19-Jan	EA	EC&E	Easier Access	Easier Access work for Lawrence Station	Eglinton to York Mills
20-Jan	22-Jan	FW	EC&E	Station Finishes	Station Finish - Porcelain enamel panels installation (St Patrick to Museum)	St George to St Andrew
27-Jan	29-Jan	FW	EC&E	ECLRT	Line 5 work at Eglinton Station	Lawrence to St Clair
29-Jan	2-Feb	EA	T&S Structures	SOGR	Asbestos abatement	Eglinton to Sheppard-Yonge
3-Feb	5-Feb	FW	EC&E	ATC Line 2	ATC Line 2 Early Works	Warden to Kennedy
5-Feb	9-Feb	EA	T&S Structures	SOGR	Asbestos abatement	Eglinton to Sheppard-Yonge
10-Feb	12-Feb	FW	EC&E	Station Finishes	Station Finish - Porcelain enamel panels installation (St Patrick to Museum)	St George to St Andrew
12-Feb	16-Feb	EA	EC&E	Easier Access	Easier Access work for Lawrence Station	Eglinton to York Mills
12-Feb	16-Feb	SLO	SEC Communications	SOGR	DAS equipment installation	Vaughan Metropolitan Centre to Finch West
20-Feb	24-Feb	EA	T&S Structures	SOGR	Asbestos abatement	Eglinton to Sheppard-Yonge
26-Feb	1-Mar	EA	T&S Structures	SOGR	Asbestos abatement	Eglinton to Sheppard-Yonge
4-Mar	8-Mar	EA	T&S Structures	SOGR	Asbestos abatement	Eglinton to Sheppard-Yonge
11-Mar	15-Mar	EA	T&S Structures	SOGR	Asbestos abatement	Eglinton to Sheppard-Yonge
18-Mar	22-Mar	EA	T&S Structures	SOGR	Asbestos abatement	Eglinton to Sheppard-Yonge
25-Mar	28-Mar	+	EC&E	SOGR	Line 1 capacity enhancement - L1CEP	Vaughan Metropolitan Centre to Finch West
25-Mar	28-Mar	+	SEC Communications	SOGR	Installation of mounting hardware (clips) / radiating cable	Vaughan Metropolitan Centre to Finch West
25-Mar	28-Mar	SLO	T&S Structures	SOGR	Leak remediation	Vaughan Metropolitan Centre to Finch West

EA	Early Weeknight Closure	SOGR	State-of-Good Repair	ECLRT	Eglinton Crosstown Light Rail Transit
FW	Weekend Closure	ATC	Automatic Train Control	YNSE	Yonge North Subway Extension
SD	Single Day Closure	ECE	Engineering, Construction and Expansion	SBY	Station Bypass
LO	Late Opening	SSE	Scarborough Subway Extension	+	Other Projects

