

Appendix **B-5**

Potential Utility Impacts

SCARBOROUGH SUBWAY EXTENSION

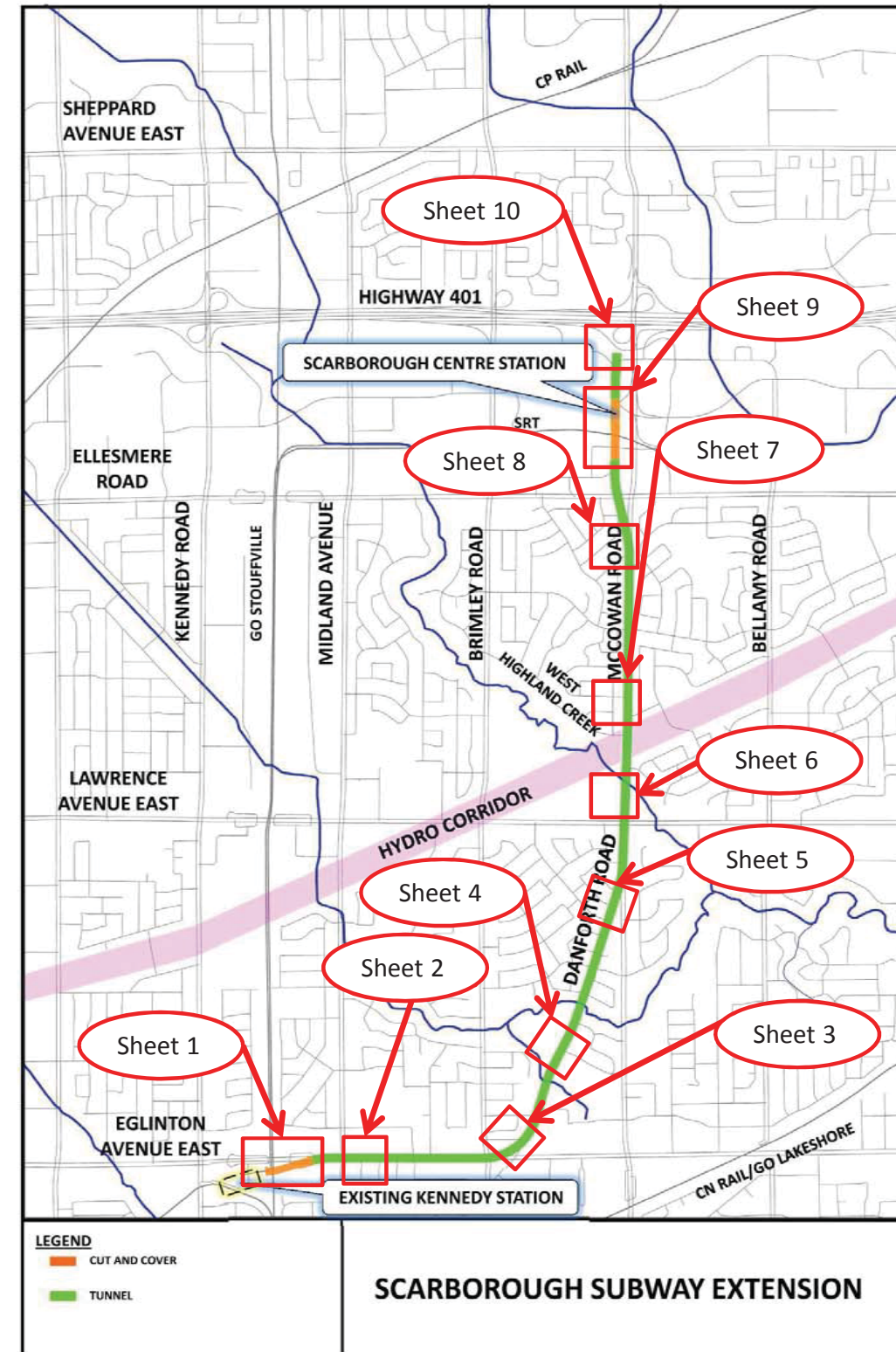
POTENTIAL UTILITY IMPACTS

May 20, 2016

KEY PLAN AND GENERAL NOTES

- Information reflected on the compiled plans (Sheets 1 to 10) are as provided in CADD format by the TTC. Plans of affected utilities received in PDF format are included separately from the compiled plan and their impacts have been accounted for in the tables.
- Impacts are based on the alignment and station locations to date.
- Areas impacted by launch and extraction shafts for Tunnel Boring Machine are included, as identified by HMM. It is assumed that launching will be from Scarborough Centre and extraction will be at Kennedy Station and the most Northern end of the alignment.

AVAILABLE UTILITY INFRASTRUCTURE INFORMATION			
Utilities	CADD	PDF	Additional Comments
Toronto Water	yes	partial	As-built drawings of infrastructure under Triton Road not provided
BELL Canada / Telecon	yes	yes	
THES	yes	yes	
Rogers	yes	yes	
TELUS	partial	partial	Infrastructure provided from north of Highway 401 to Sheppard Avenue only.
Enbridge Gas	no	yes	
Hydro One	no	yes	
MTS Allstream	no	yes	
Allstream	no	yes	
Cogeco	no	partial	
Group Telecom	partial	no	CADD provided in the SRT's north-south corridor only.
Beanfield Metroconnect	n/a	n/a	
Metro Fibrewerx	n/a	n/a	
Enwave	n/a	n/a	
Videotron	n/a	n/a	
TeraSpan	n/a	n/a	



Cut and Cover- Box East of Kennedy Station - Sheet 1				
Utility Identification	Description	Crossing / Longitudinal	Proposed Mitigation	Notes
A1	Water Main	C	Retain in Place	300mm DI
A2	Water Main	C	Retain in Place	200mm DI
B	Storm Sewer	L	Retain in Place	600mm West to East, AC/Concrete
D	Bell Canada	C	Retain in Place	Buried Cable & Conduit
E	TH (OH)	L	Retain in Place	
F	TH (UG)	C	Retain in Place	
G1	Enbridge Gas	L	Retain in Place	NPS 12 SC HP (East-West along South side of Eglinton Ave.)
G2	Enbridge Gas	C	Retain in Place	NPS 2 ST IP
H	GT Telecom	C	Retain in Place	
N	Cogeco	L	Retain in Place	

Cut and Cover- EEB 1- Sheet 2				
Utility Identification	Description	Crossing / Longitudinal	Proposed Mitigation	Notes
A	Watermain	L	Retain in Place	200mm West to East, CI
B	Storm Sewer	L	Retain in Place	750-825mm West to East, Concrete
C1	Sanitary Sewer	L	Retain in Place	600mm West to East, Concrete
C2	Sanitary Sewer	L	Retain in Place	675 mm West to East, Concrete
E	TH (OH)	L	Retain in Place	
F	TH (UG)	L	Retain in Place	
G1	Enbridge Gas	L	Retain in Place	NPS 8 SC IP (East-West along South side of Eglinton Ave.)
G2	Enbridge Gas	C	Retain in Place	NPS 2 SC IP
N	Cogeco	L	Retain in Place	

Cut and Cover - EEB 2- Sheet 3				
Utility Identification	Description	Crossing / Longitudinal	Proposed Mitigation	Notes
A	Water Main	L	Retain in Place	250mm South to North, CI
C	Sanitary Sewer	L	Retain in Place	250 mm South to North
D	Bell	C	Relocate	Conduit
E	TH (OH)	L	Retain in Place	
F	TH (UG)	L	Relocate	
G1	Enbridge Gas	L	Relocate	NPS 4 SC IP (North-South on Danforth Rd.)
J	Rogers	C	Relocate	

Cut and Cover - EEB 3 - Sheet 4				
Utility Identification	Description	Crossing/ Longitudinal	Proposed Mitigation	Notes
A	Water Main	L	Retain in Place	250mm South to North, CI
B	Storm Sewer	L	Retain in Place	525mm South to North, Concrete
C	Sanitary Sewer	L	Retain in Place	250mm South to North, Concrete
E	TH (OH)	L	Retain in Place	
F	TH (UG)	L	Retain in Place	
G1	Enbridge Gas	L	Relocate	NPS 4 SC IP (North-South along Danforth Rd.)
G2	Enbridge Gas	C	Retain in Place	NPS 1 1/4 ST IP
J	Rogers	C	Retain in Place	

Cut and Cover - EEB 4 - Sheet 5				
Utility Identification	Description	Crossing/ Longitudinal	Proposed Mitigation	Notes
A1	Water Main	C	Retain in Place	150mm CI
A2	Water Main	L	Retain in Place	250mm South to North, CI
B1	Storm Sewer	C	Retain in Place	300mm, Concrete
B2	Storm Sewer	L	Retain in Place	300mm-450mm South to North, Concrete
C1	Sanitary Sewer	C	Retain in Place	250 mm, Concrete
C2	Sanitary Sewer	L	Retain in Place	250 mm South to North, Concrete
E	TH (OH)	L	Retain in Place	
G1	Enbridge Gas	L	Retain in Place	NPS 1 1/4 PE IP (North-South on Danforth Road)

Cut and Cover- EEB 5 - Sheet 6				
Utility	Description	Crossing/ Longitudinal	Proposed Mitigation	Notes
E	TH (OH)	L	Relocate	

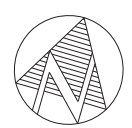
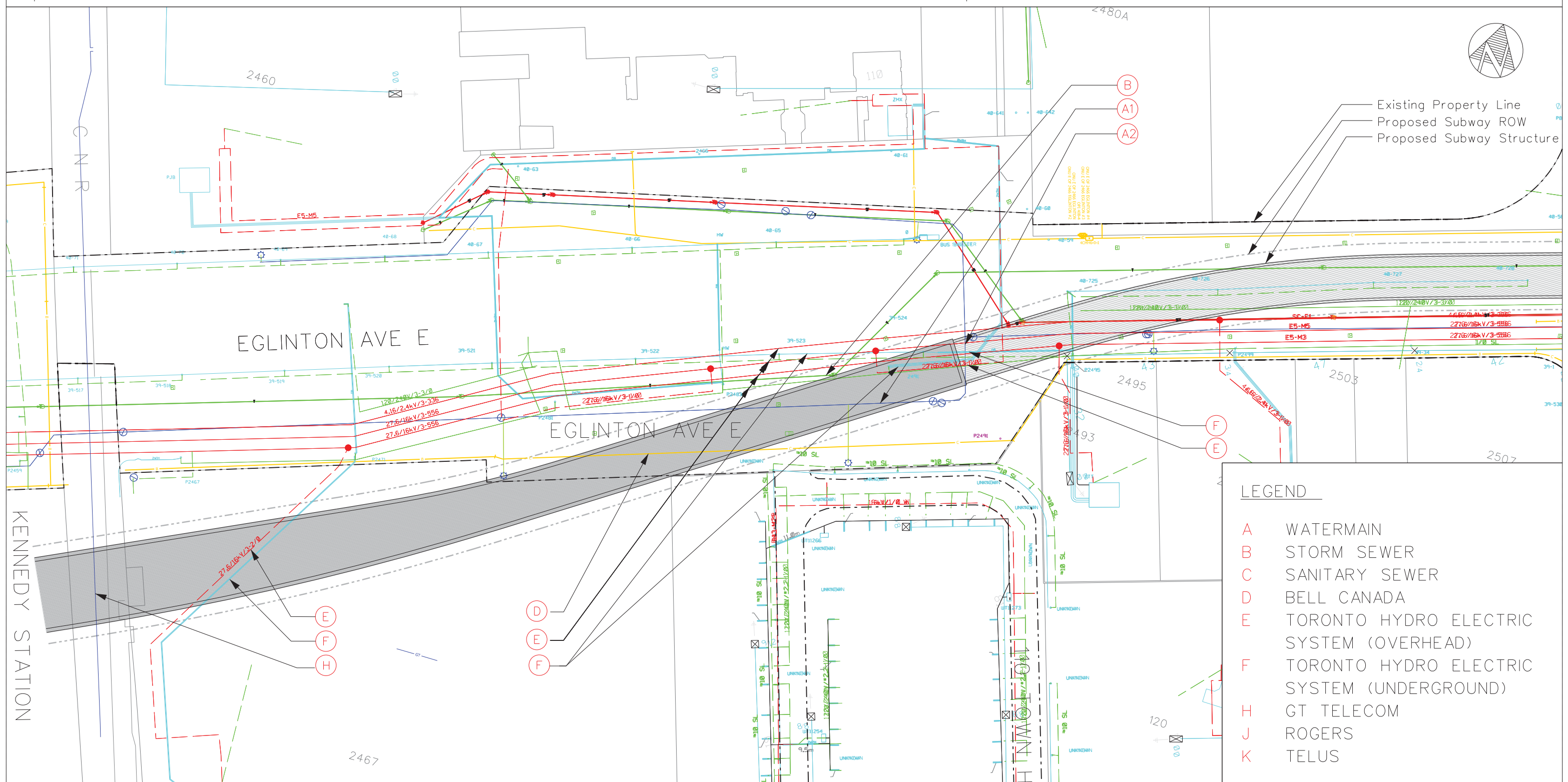
Cut and Cover - EEB 6 - Sheet 7				
Utility Identification	Description	Crossing/ Longitudinal	Proposed Mitigation	Notes
A	Water Main	L	Retain in Place	300mm South to North, CI
D1	Bell	L	Retain in Place	Conduit
D2	Bell	L	Retain in Place	Buried Cable
E	TH (OH)	L	Retain in Place	
G1	Enbridge Gas	L	Retain in Place	NPS 8 SC IP (North-South on McCowan Road)
J1	Rogers	C	Relocate	
J2	Rogers	L	Relocate	
J3	Rogers	L	Relocate	

Cut and Cover - EEB 7 - Sheet 8				
Utility Identification	Description	Crossing / Longitudinal	Proposed Mitigation	Notes
A	Water Main	L	Retain in Place	300mm North to South, CI
B	Storm Sewer	L	Retain in Place	600mm North to South, Concrete
D1	Bell	L	Retain in Place	Buried Cable
D2	Bell	L	Retain in Place	Buried Cable
E	TH (OH)	L	Retain in Place	
F	TH (UG)	L	Retain in Place	
G1	Enbridge Gas	L	Relocate	NPS 8 SC IP (North-South on McCowan Road)
N	Cogeco	L	Retain in Place	

Cut and Cover - Scarborough Centre Station - Sheet 9				
Utility Identification	Description	Crossing/ Longitudinal	Proposed Mitigation	Notes
A	Water Main	C	Relocate	300mm, DI
B1	Storm Sewer	C	Relocate	1350mm West to East, Concrete
B2	Storm Sewer	L	Relocate	900mm North to South, Concrete
B3	Storm Sewer	C	Relocate	1500mm, Concrete
C1	Sanitary Sewer	C	Relocate	1350 mm West to East, Concrete
E	TH (OH)	C/L	Relocate	
F	TH (UG)	C/L	Relocate	

Cut and Cover - EEB 8 - Sheet 10				
Utility Identification	Description	Crossing/ Longitudinal	Proposed Mitigation	Notes
B	Storm Sewer	C	Retain in Place	1050mm, Concrete
C	Sanitary Sewer	C	Retain in Place	300mm, VIT
E1	TH (OH)	C	Relocate	
E2	TH (OH)	C	Retain in Place	
F1	TH (UG)	C	Relocate	
F2	TH (UG)	C	Retain in Place	

CUT AND COVER BOX EAST OF KENNEDY STATION



Existing Property Line
Proposed Subway ROW
Proposed Subway Structure

LEGEND

- A WATERMAIN
- B STORM SEWER
- C SANITARY SEWER
- D BELL CANADA
- E TORONTO HYDRO ELECTRIC SYSTEM (OVERHEAD)
- F TORONTO HYDRO ELECTRIC SYSTEM (UNDERGROUND)
- H GT TELECOM
- J ROGERS
- K TELUS

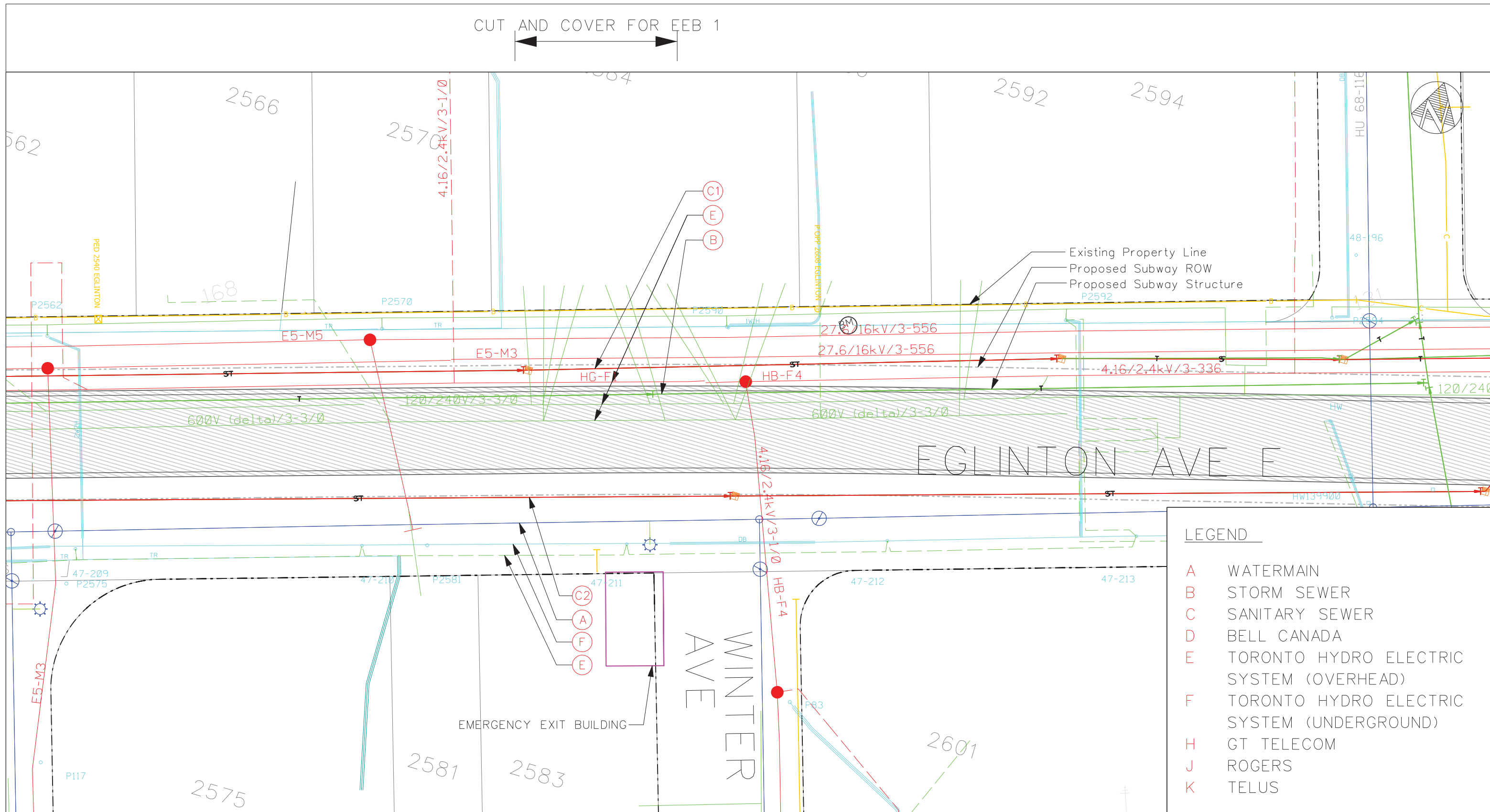
DATE: MAY 17, 2016

SCARBOROUGH SUBWAY EXTENSION - UTILITY IMPACTS IN CUT AND COVER AREAS

SCALE 1:1000

SHEET 1 OF 10

CUT AND COVER FOR EEB 1



LEGEND	
A	WATERMAIN
B	STORM SEWER
C	SANITARY SEWER
D	BELL CANADA
E	TORONTO HYDRO ELECTRIC SYSTEM (OVERHEAD)
F	TORONTO HYDRO ELECTRIC SYSTEM (UNDERGROUND)
H	GT TELECOM
J	ROGERS
K	TELUS

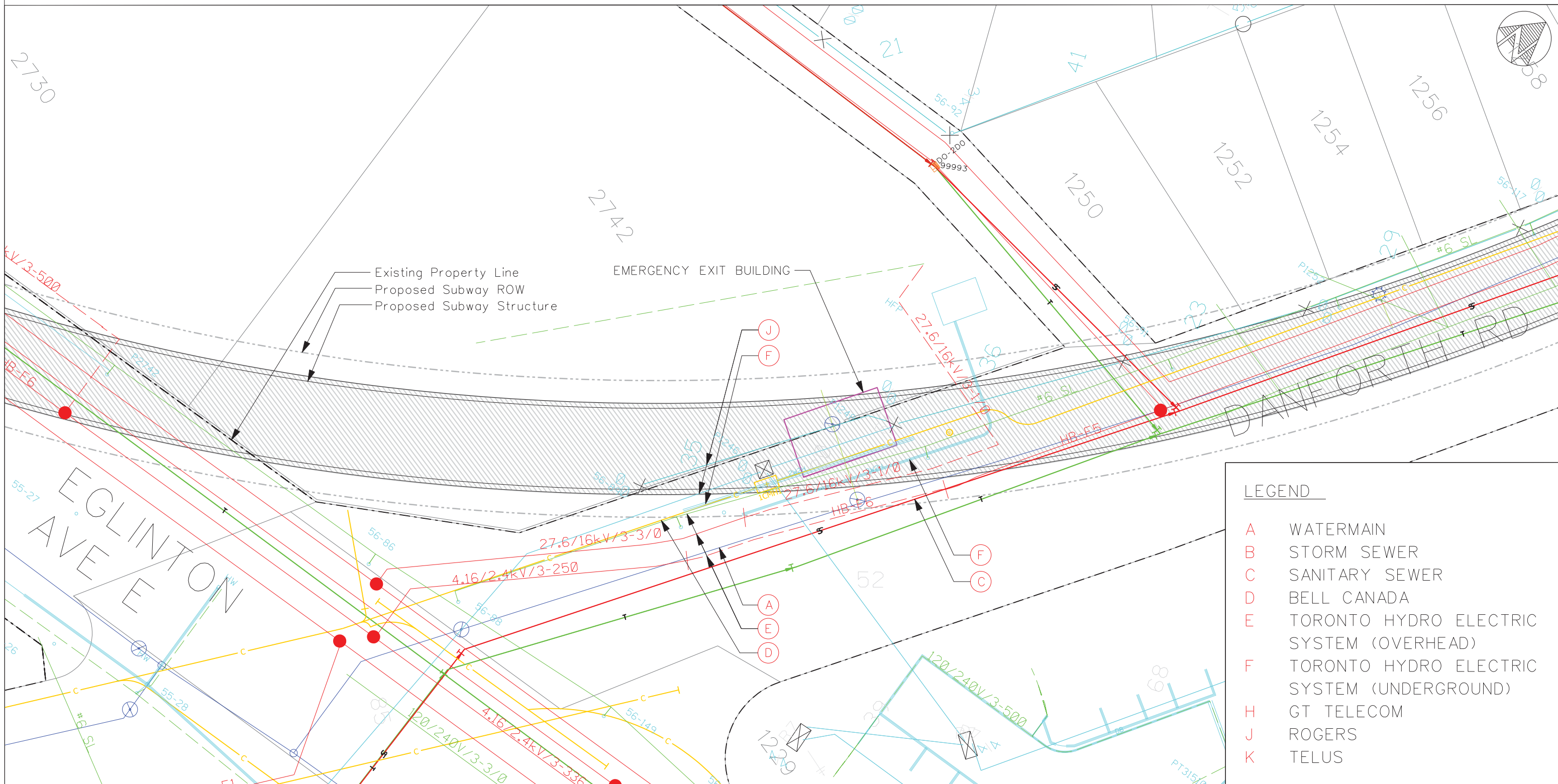
DATE: MAY 17, 2016

SCARBOROUGH SUBWAY EXTENSION - UTILITY IMPACTS IN CUT AND COVER AREAS

SCALE 1:500

SHEET 2 OF 10

CUT AND COVER FOR EEB 2



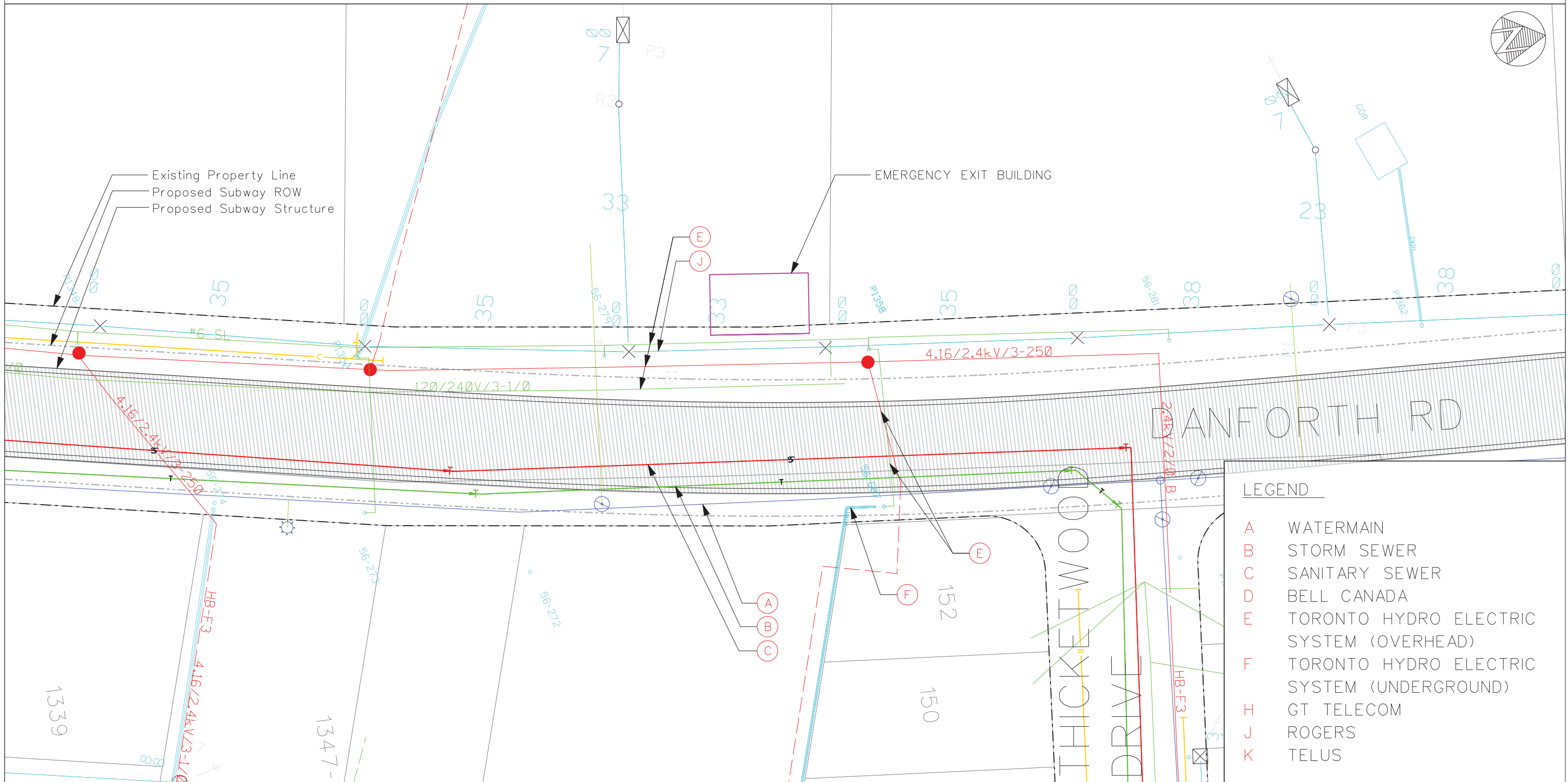
DATE: MAY 17, 2016

SCARBOROUGH SUBWAY EXTENSION - UTILITY IMPACTS IN CUT AND COVER AREAS

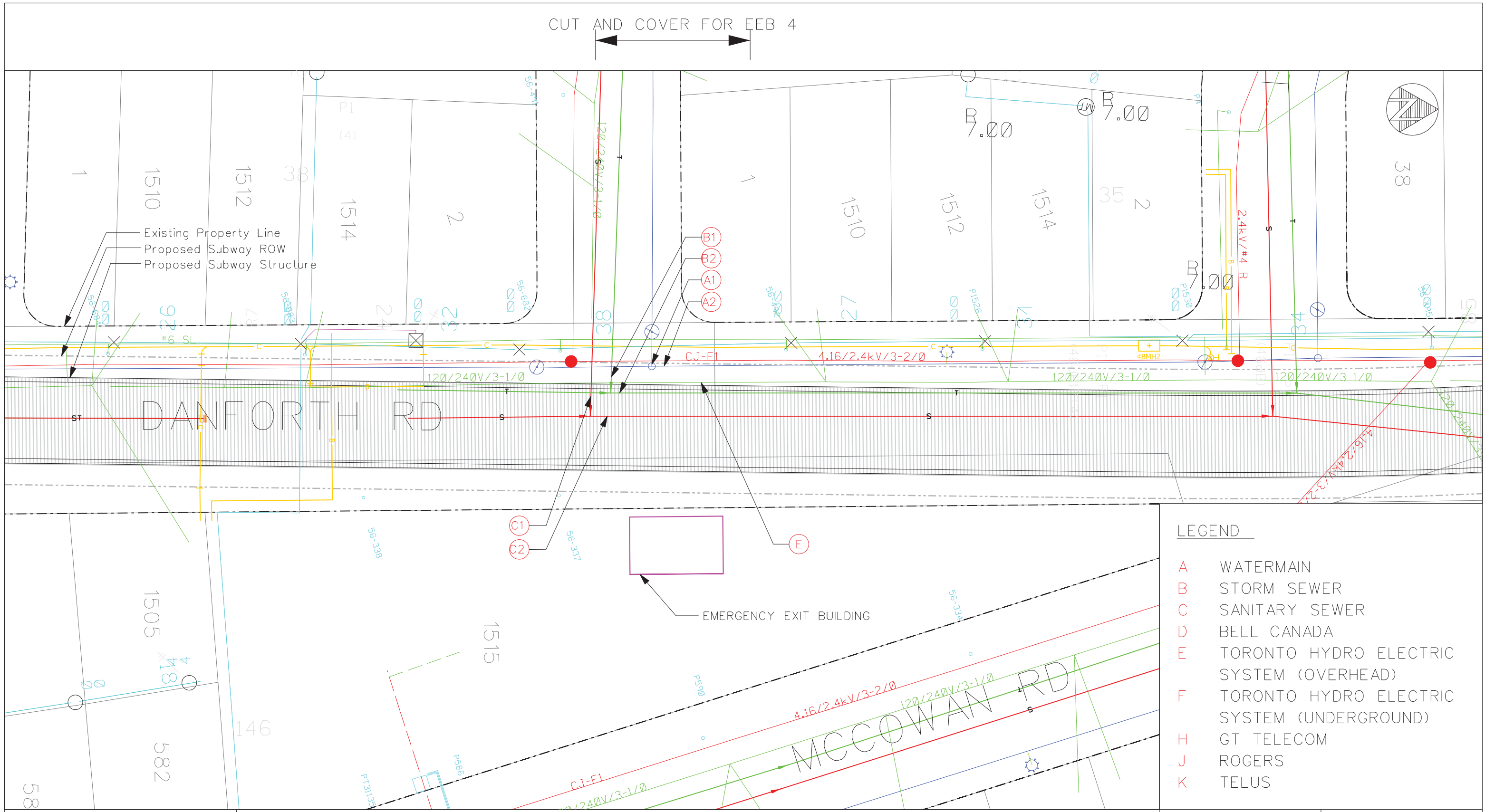
SCALE 1:500

SHEET 3 OF 10

CUT AND COVER FOR EEB 3



CUT AND COVER FOR EEB 4



DANFORTH RD

MCCOWAN RD

EMERGENCY EXIT BUILDING

LEGEND

- A WATERMAIN
- B STORM SEWER
- C SANITARY SEWER
- D BELL CANADA
- E TORONTO HYDRO ELECTRIC SYSTEM (OVERHEAD)
- F TORONTO HYDRO ELECTRIC SYSTEM (UNDERGROUND)
- H GT TELECOM
- J ROGERS
- K TELUS

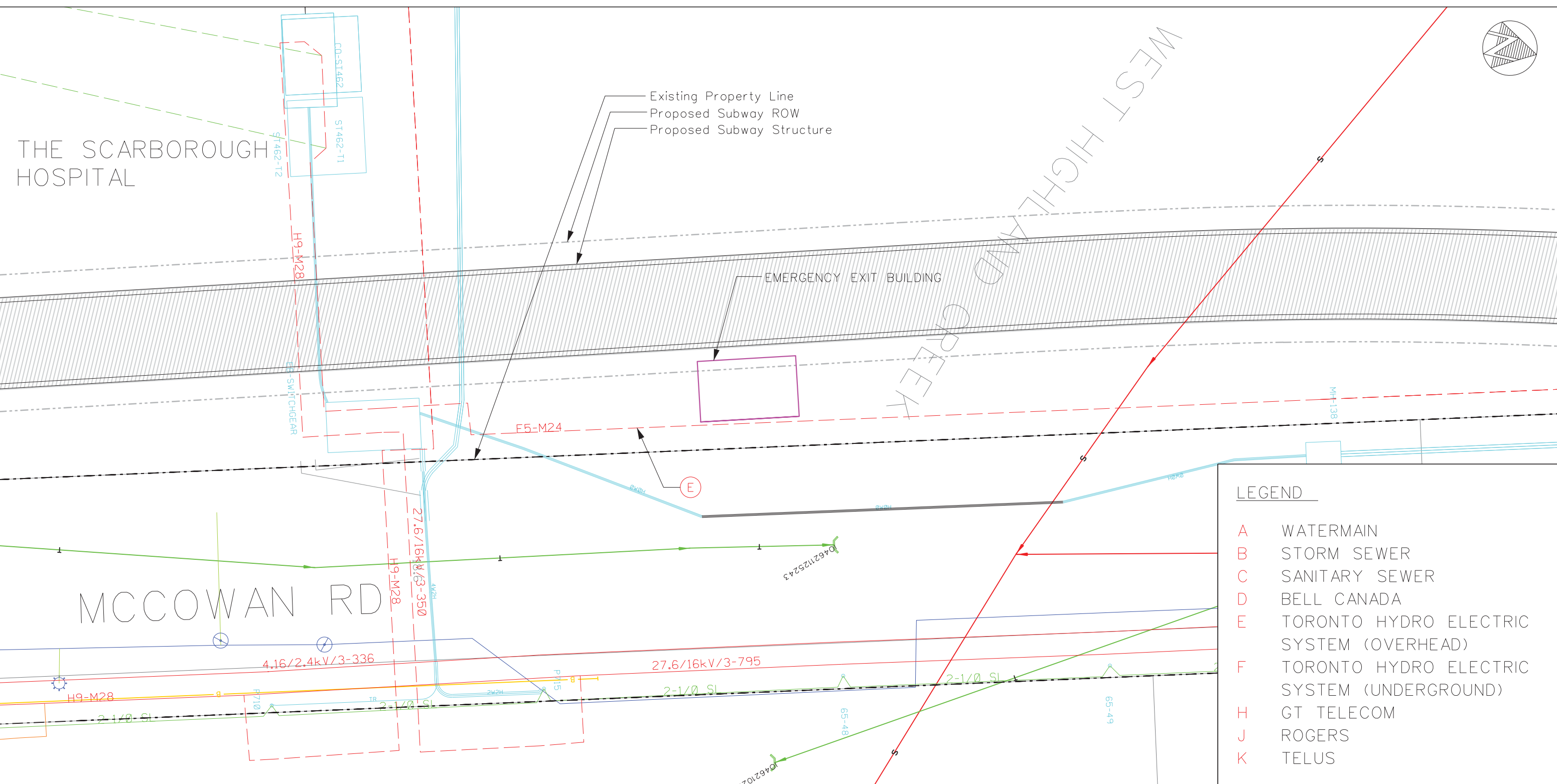
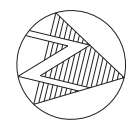
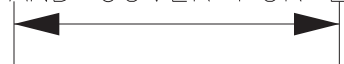
DATE: MAY 17, 2016

SCARBOROUGH SUBWAY EXTENSION - UTILITY IMPACTS IN CUT AND COVER AREAS

SCALE 1:500

SHEET 5 OF 10

CUT AND COVER FOR EEB 5

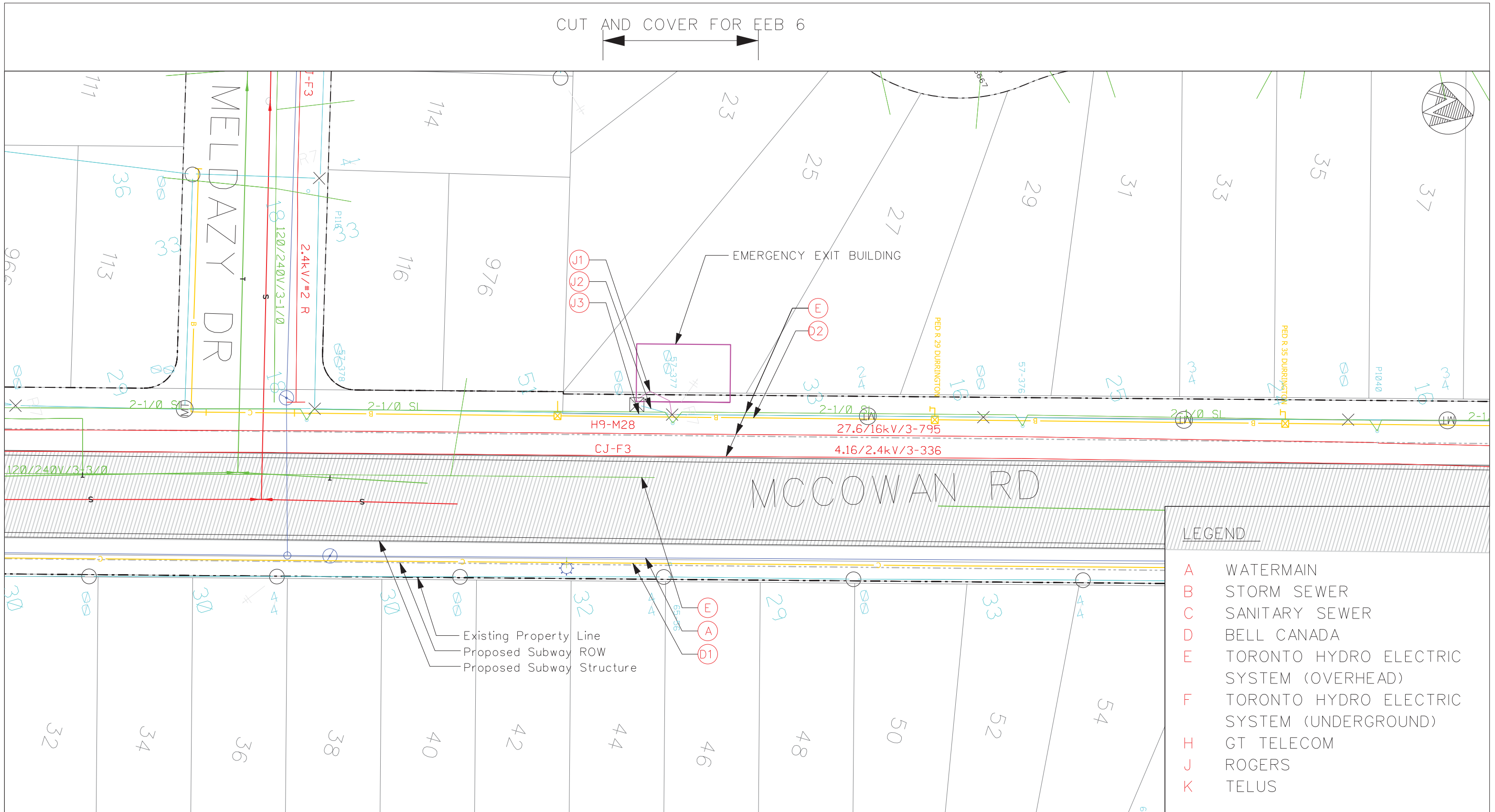


DATE: MAY 17, 2016

SCARBOROUGH SUBWAY EXTENSION - UTILITY IMPACTS IN CUT AND COVER AREAS

SCALE 1:500

SHEET 6 OF 10



CUT AND COVER FOR EEB 6

MELODAZY DR

EMERGENCY EXIT BUILDING

MCCOWAN RD

LEGEND

- A WATERMAIN
- B STORM SEWER
- C SANITARY SEWER
- D BELL CANADA
- E TORONTO HYDRO ELECTRIC SYSTEM (OVERHEAD)
- F TORONTO HYDRO ELECTRIC SYSTEM (UNDERGROUND)
- H GT TELECOM
- J ROGERS
- K TELUS

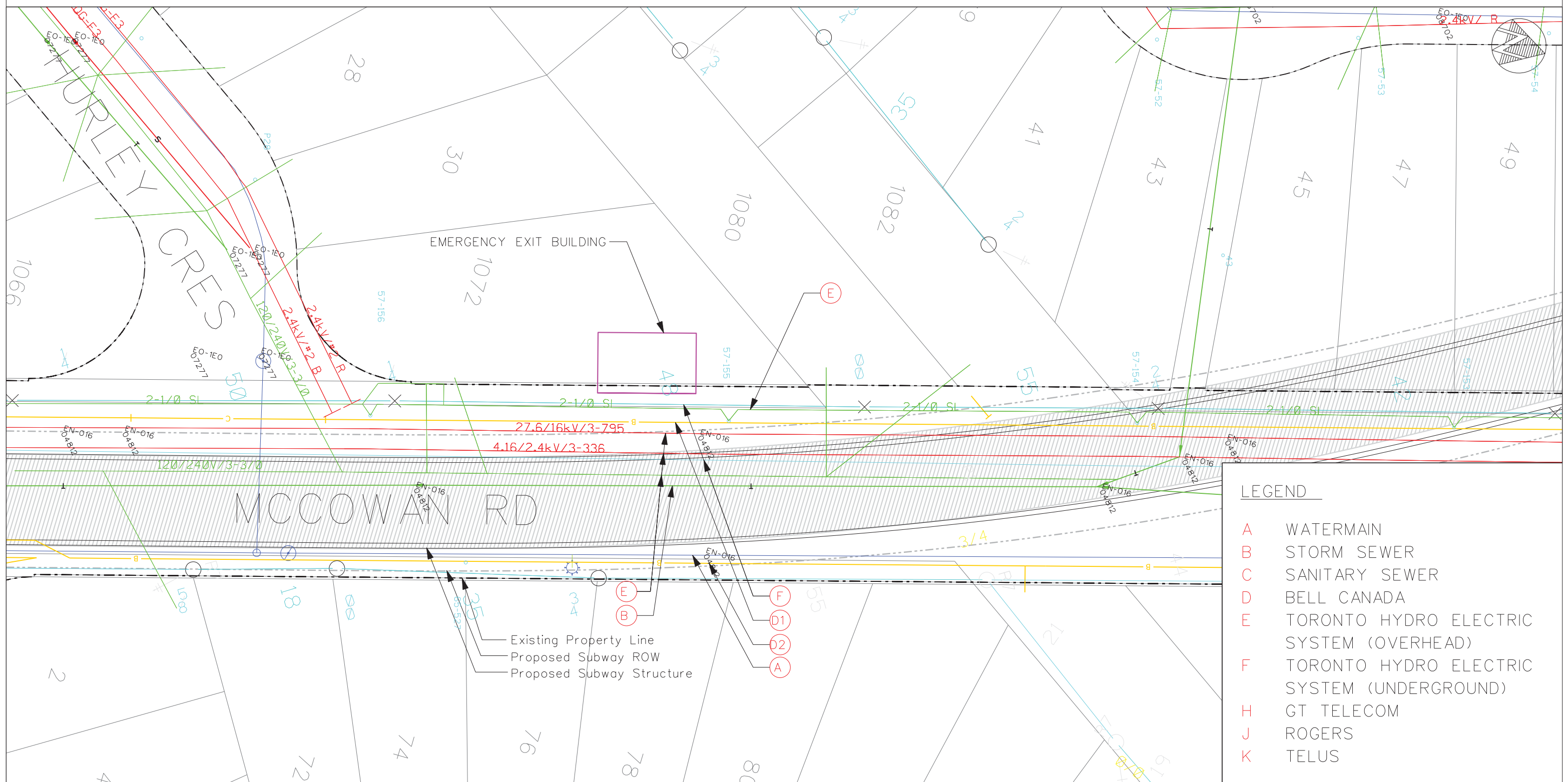
DATE: MAY 17, 2016

SCARBOROUGH SUBWAY EXTENSION - UTILITY IMPACTS IN CUT AND COVER AREAS

SCALE 1:500

SHEET 7 OF 10

CUT AND COVER FOR EEB 7



LEGEND	
A	WATERMAIN
B	STORM SEWER
C	SANITARY SEWER
D	BELL CANADA
E	TORONTO HYDRO ELECTRIC SYSTEM (OVERHEAD)
F	TORONTO HYDRO ELECTRIC SYSTEM (UNDERGROUND)
H	GT TELECOM
J	ROGERS
K	TELUS

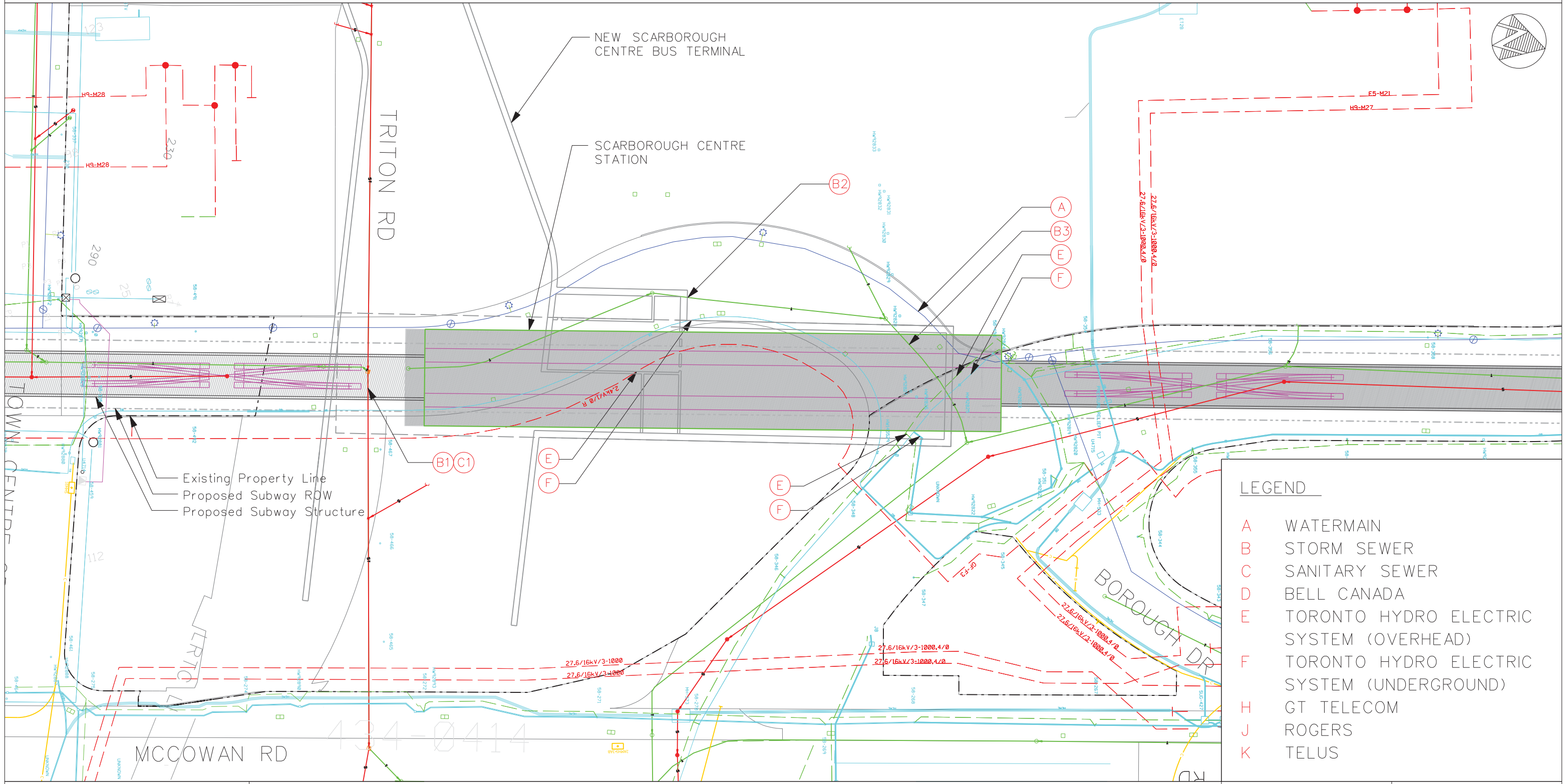
DATE: MAY 17, 2016

SCARBOROUGH SUBWAY EXTENSION - UTILITY IMPACTS IN CUT AND COVER AREAS

SCALE 1:500

SHEET 8 OF 10

CUT AND COVER FOR SCARBOROUGH CENTRE STATION



LEGEND	
A	WATERMAIN
B	STORM SEWER
C	SANITARY SEWER
D	BELL CANADA
E	TORONTO HYDRO ELECTRIC SYSTEM (OVERHEAD)
F	TORONTO HYDRO ELECTRIC SYSTEM (UNDERGROUND)
H	GT TELECOM
J	ROGERS
K	TELUS

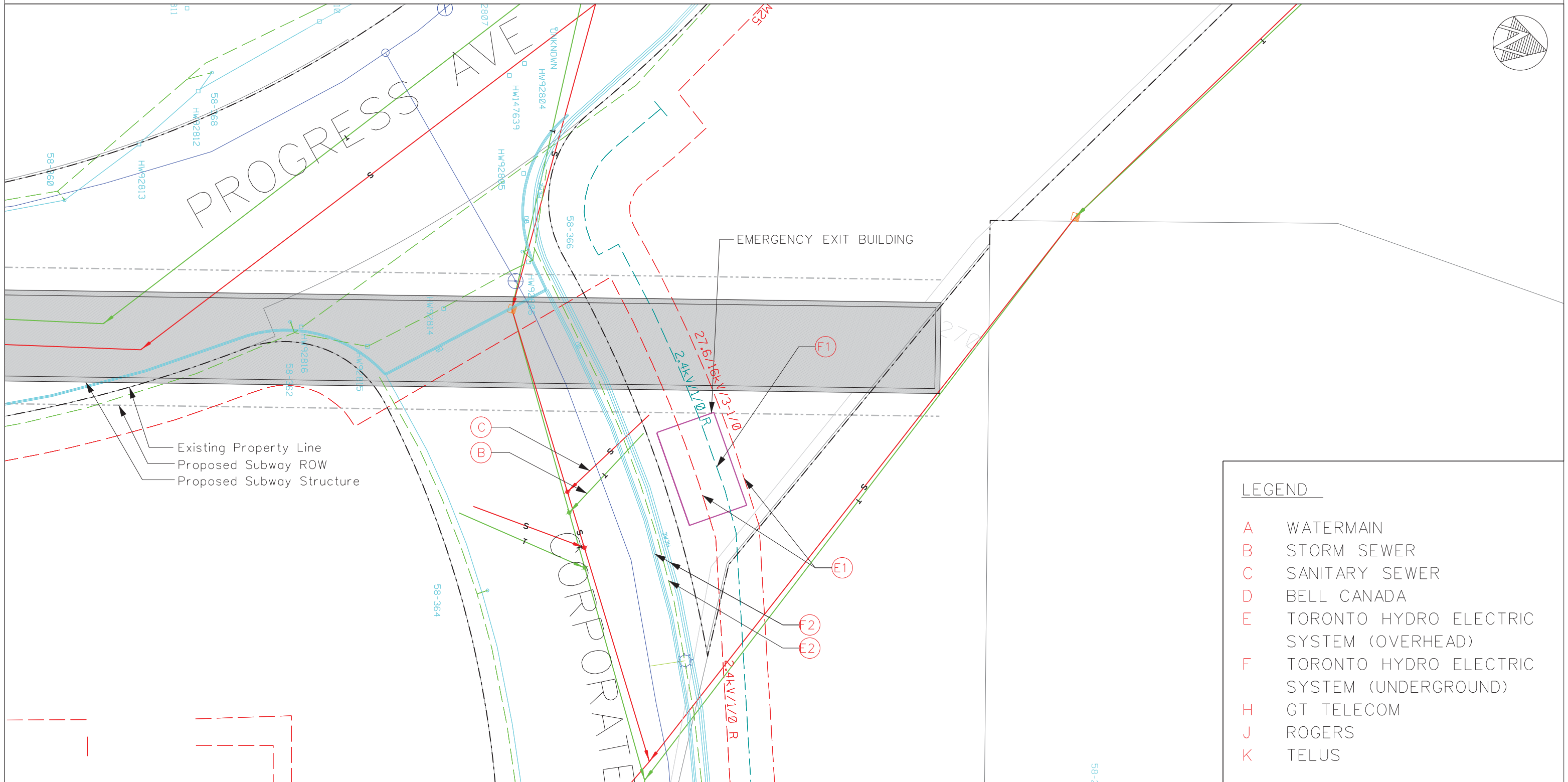
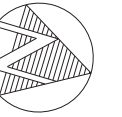
DATE: MAY 17, 2016

SCARBOROUGH SUBWAY EXTENSION - UTILITY IMPACTS IN CUT AND COVER AREAS

SCALE 1:1000

SHEET 9 OF 10

CUT AND COVER FOR EEB 8



PROGRESS AVE

CORPORATE AVE

EMERGENCY EXIT BUILDING

Existing Property Line
Proposed Subway ROW
Proposed Subway Structure

LEGEND

- A WATERMAIN
- B STORM SEWER
- C SANITARY SEWER
- D BELL CANADA
- E TORONTO HYDRO ELECTRIC SYSTEM (OVERHEAD)
- F TORONTO HYDRO ELECTRIC SYSTEM (UNDERGROUND)
- H GT TELECOM
- J ROGERS
- K TELUS

DATE: MAY 17, 2016

SCARBOROUGH SUBWAY EXTENSION - UTILITY IMPACTS IN CUT AND COVER AREAS

SCALE 1:500

SHEET 10 OF 10

