



# **Easier Access Project TTC Greenwood Station**

**Construction Overview**  
January 2025

# | Status of Easier Access Program



- **57 out of 70** subway stations are accessible with new elevators.
- **12** stations are under construction, including College, Summerhill, Rosedale, Lawrence, Greenwood, High Park, Christie, Museum, King, Warden, Spadina and Islington.
- **Greenwood Station** has AODA upgrades, including elevators which are scheduled to be in-service by mid-2025\*. There will be other minor works that will continue after that date at the station.

\*Pending weather, possible third party union strikes and unforeseen site conditions and events.

# | Advisory Committee on Accessible Transit (ACAT)



## ACAT Overview

- Toronto citizens who advise the TTC on difficulties faced by people with disabilities and seniors.
- Recommends the elimination of barriers to accessible public transit in the city of Toronto.
- ACAT consists of 15 volunteer committee members who are appointed by the TTC Board.

## ACAT's Role

- Represents the needs and concerns of persons with disabilities and seniors who use public transit services provided by the TTC.
- Advises the TTC on the provision of accessible public transit.
- Advises the TTC on necessary policy issues for services that pertain to the interests of persons with disabilities and seniors.
- Supports TTC staff in consulting, educating and advising persons with disabilities, seniors and the community at large.
- Subcommittees: Design Review, Service Planning, Communications, Wheel-Trans Operations.
- Advises the TTC on priority and plans for Easier Access projects.

# | Greenwood Station - Easier Access Improvements

**TTC will make Greenwood Station accessible with new elevators at the existing main entrance building. This work will include:**

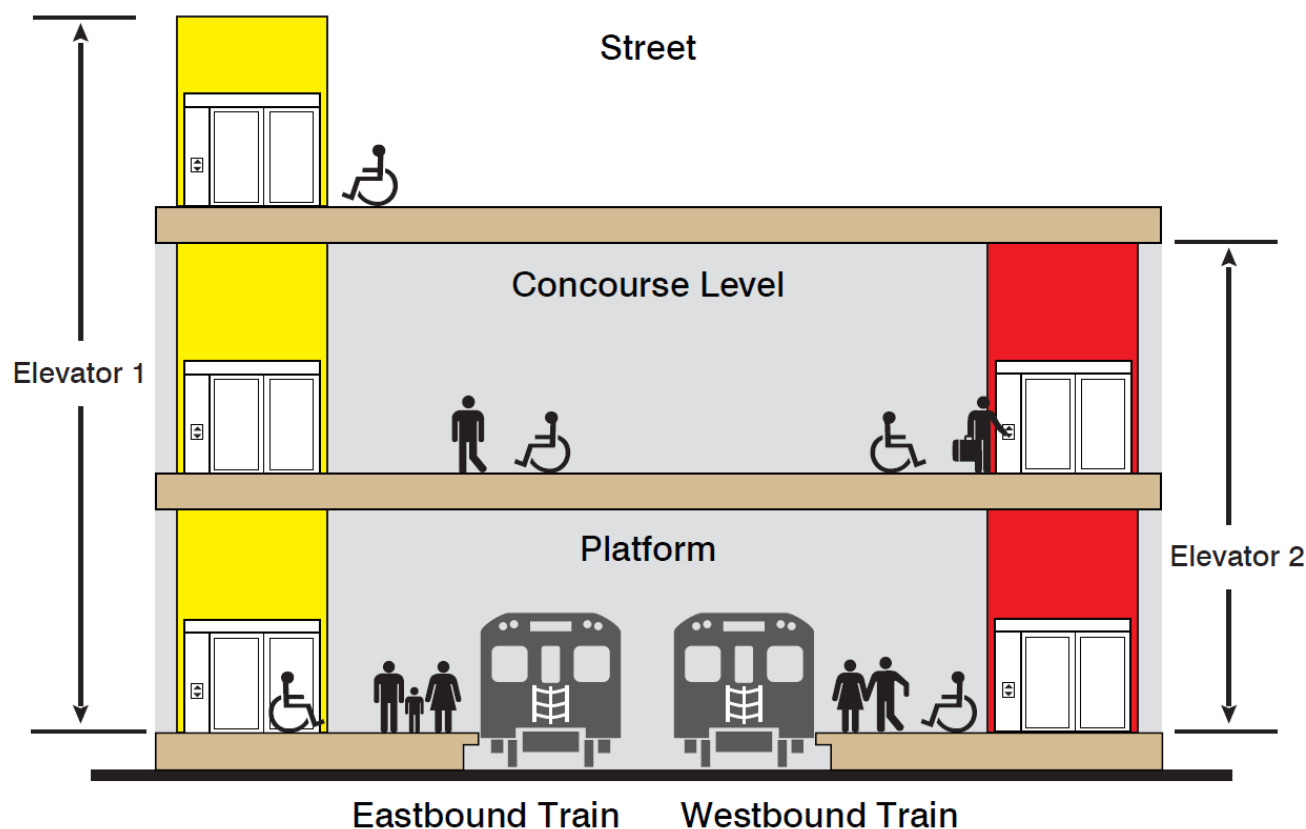
Barrier-free path from the main entrance to all levels of the station including installation of:

- 2 elevators to access eastbound and westbound platforms
- Automatic sliding station entry doors
- Improved signage
- CCTV – Security cameras along the accessible pathway

The Easier Access improvements are reviewed by ACAT (Advisory Committee on Accessible Transit).

# Easier Access Program

- Program to make all stations accessible.
- Elevators, sliding doors, accessible fare-gates.
- Elevators are built at the station entrance.



Greenwood Station elevator section image

# Greenwood Station Elevator Site Plan

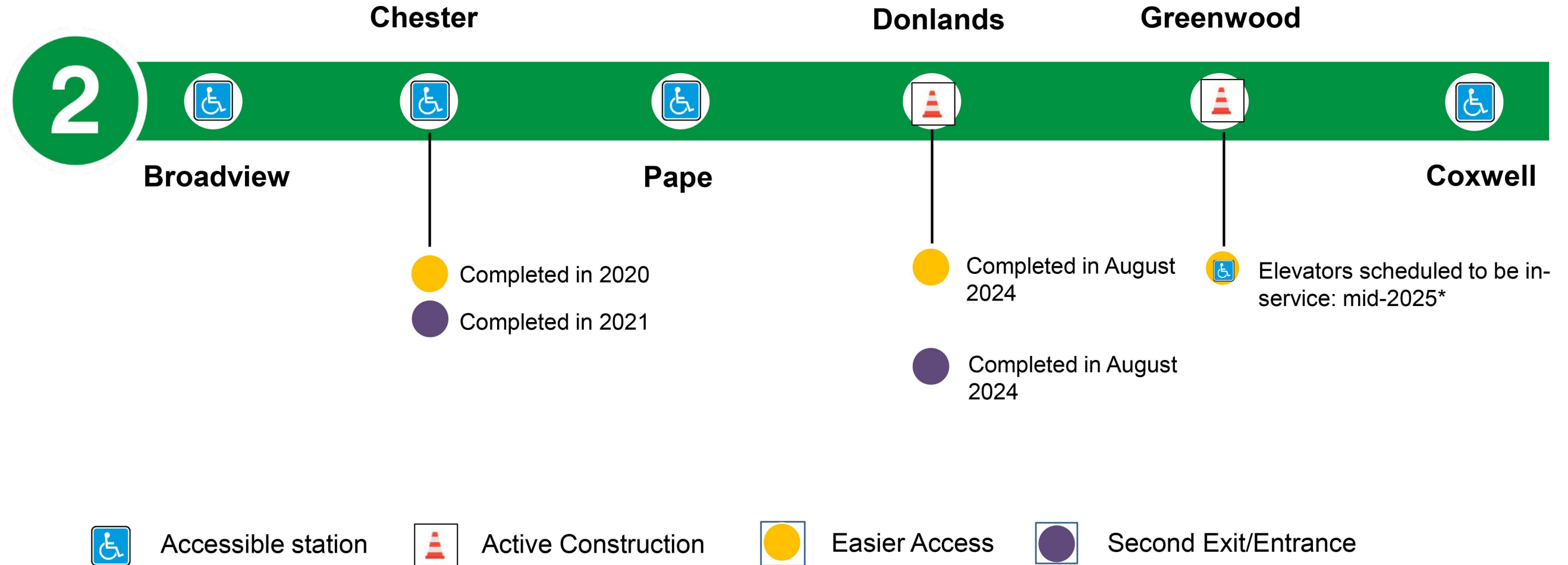


**E1** – Street-level location of new elevator to access the street-to-concourse-to eastbound subway platform level.

**E2** – Underground location of new elevator to access the concourse-to westbound platform subway level.



# Nearby Stations – Accessibility and Construction Schedule



\*Pending weather, possible third party union strikes and unforeseen site conditions and events.

# | Greenwood Station Project Schedule

**October 7, 2021**

Pre-construction community meeting online

**Fall 2021**

Start construction on elevator project

**Mid - 2025\***

Elevators in-service

**Summer 2025**

Minor works will continue after the elevators in-service date

\*Pending weather, possible third party union strikes and unforeseen site conditions and events.

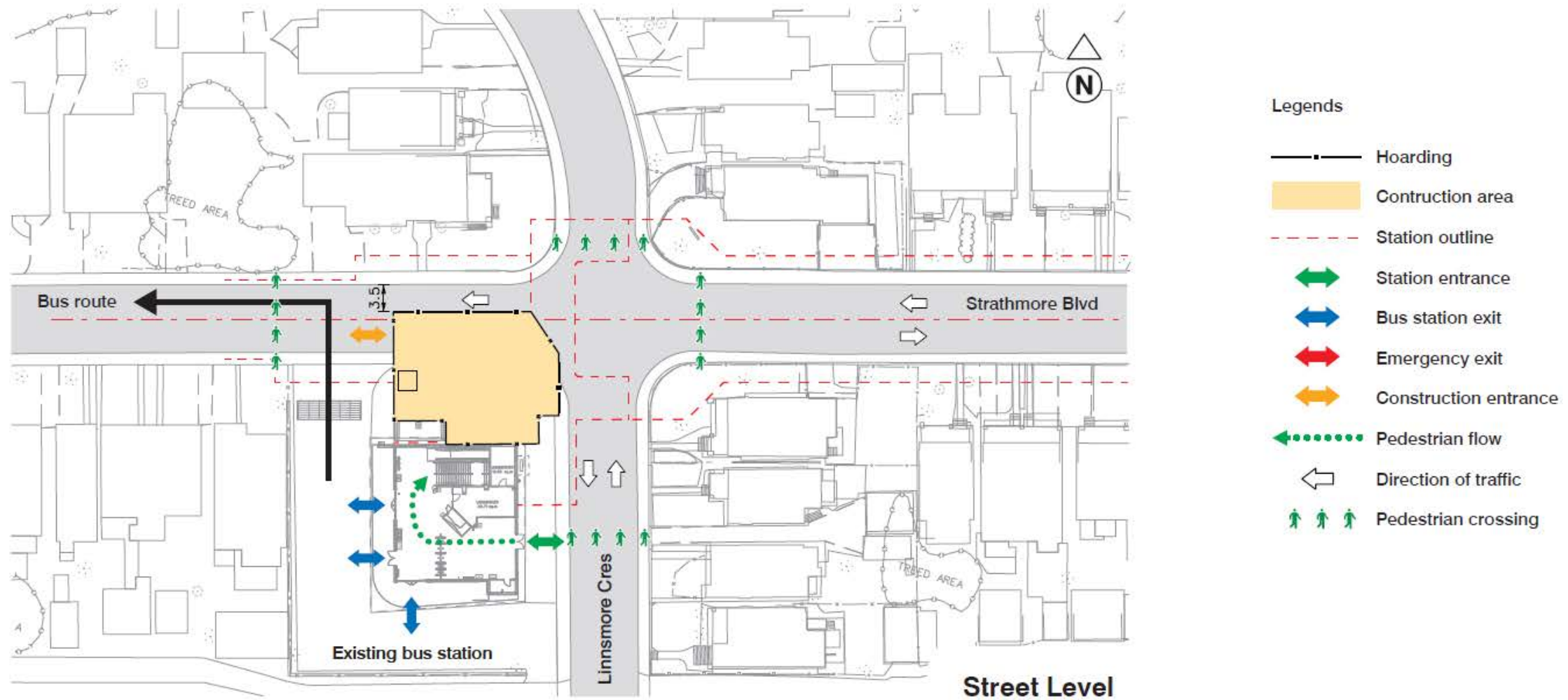




# | Conceptual Staging Plans

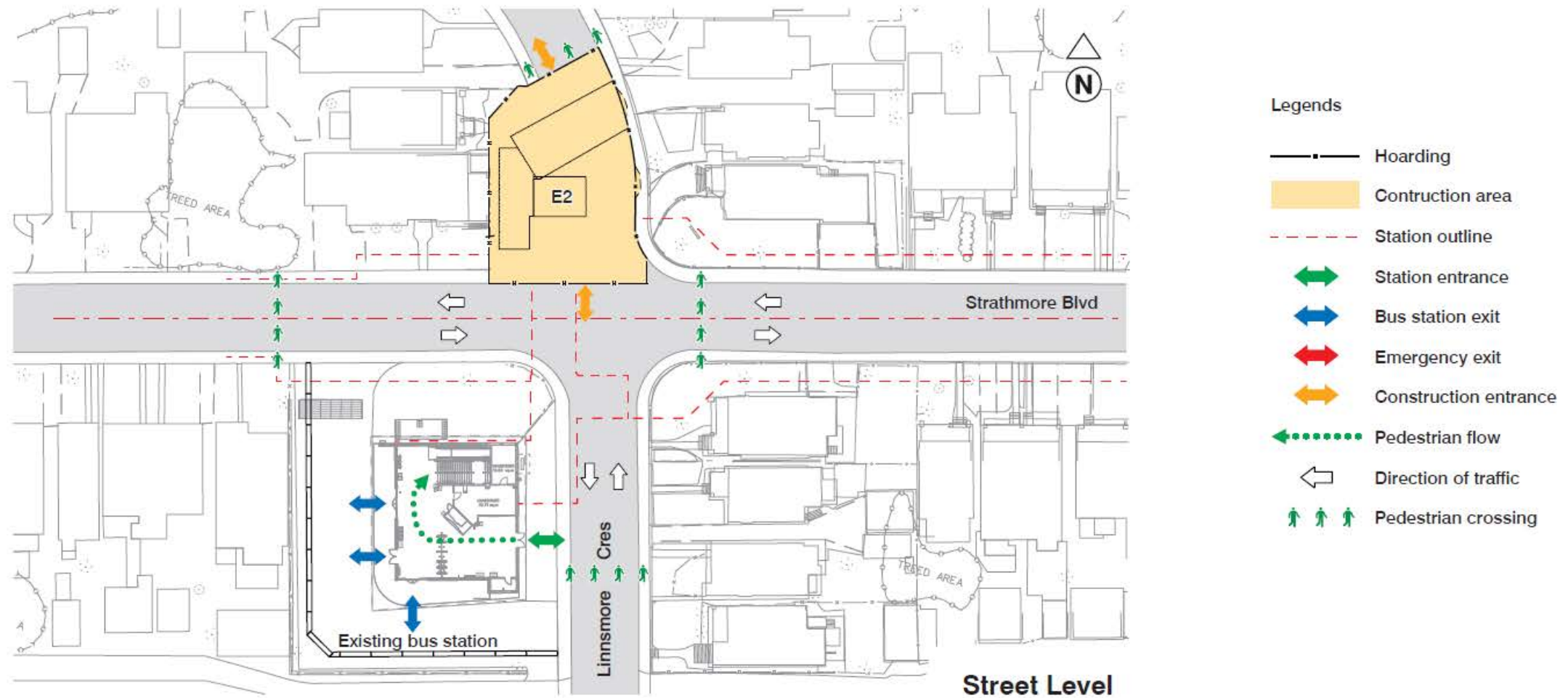
- The following slides include conceptual staging plans - provided for illustrative purposes only.
- **Plans are subject to change** as information and the construction planning is finalized by the contractor and later approved by the City of Toronto, Transportation Services.

# Conceptual Staging - Phase 1 – Completed in Early 2022



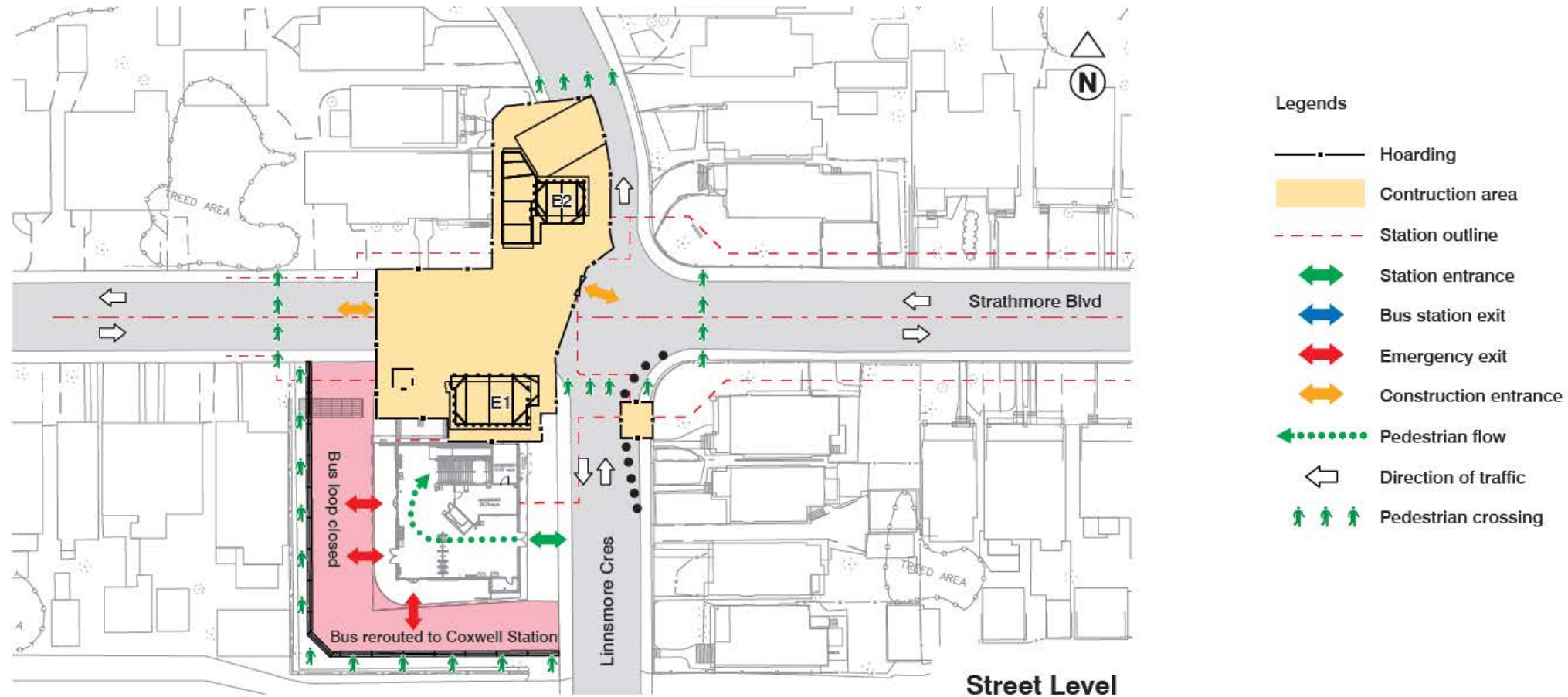
Plans are subject to change

# Conceptual Staging - Phase 2 – Completed in 2022



Plans are subject to change

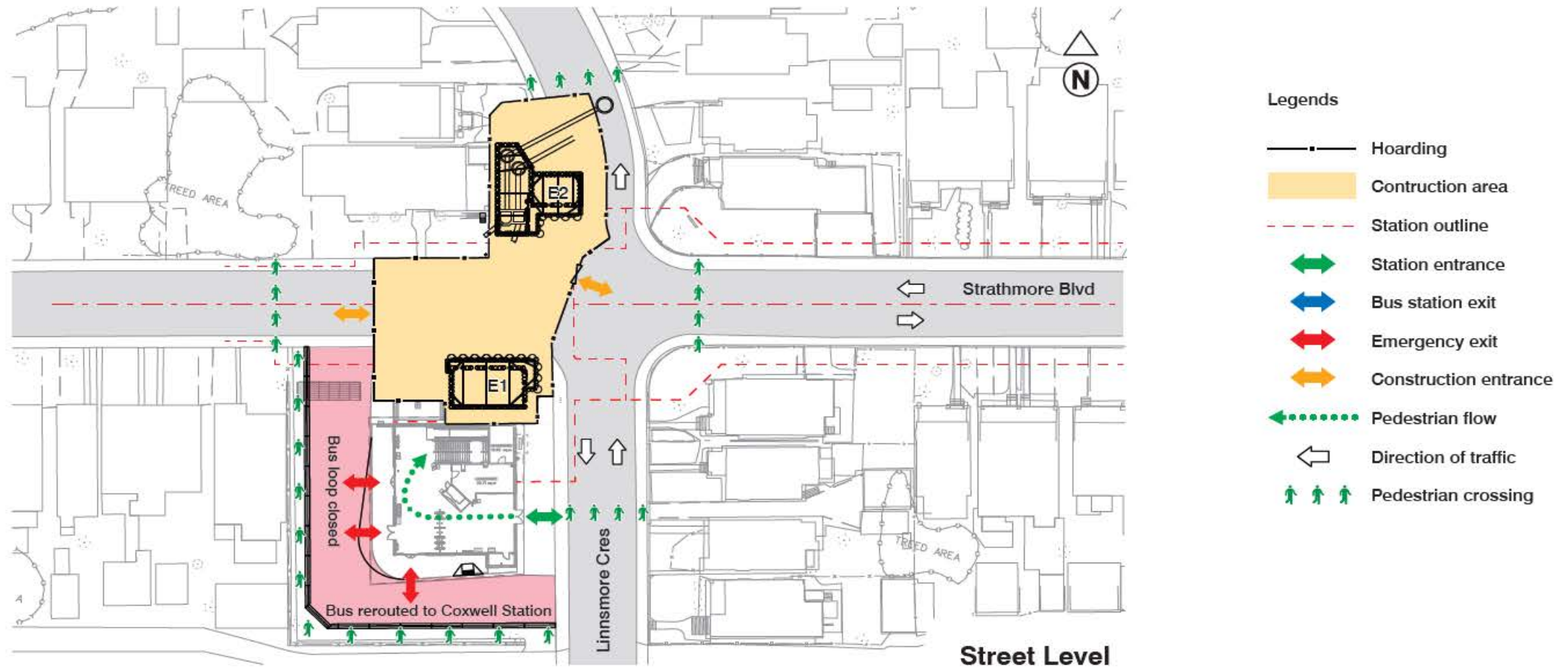
# Conceptual Staging - Phase 3 – Completed in Spring 2023



Plans are subject to change

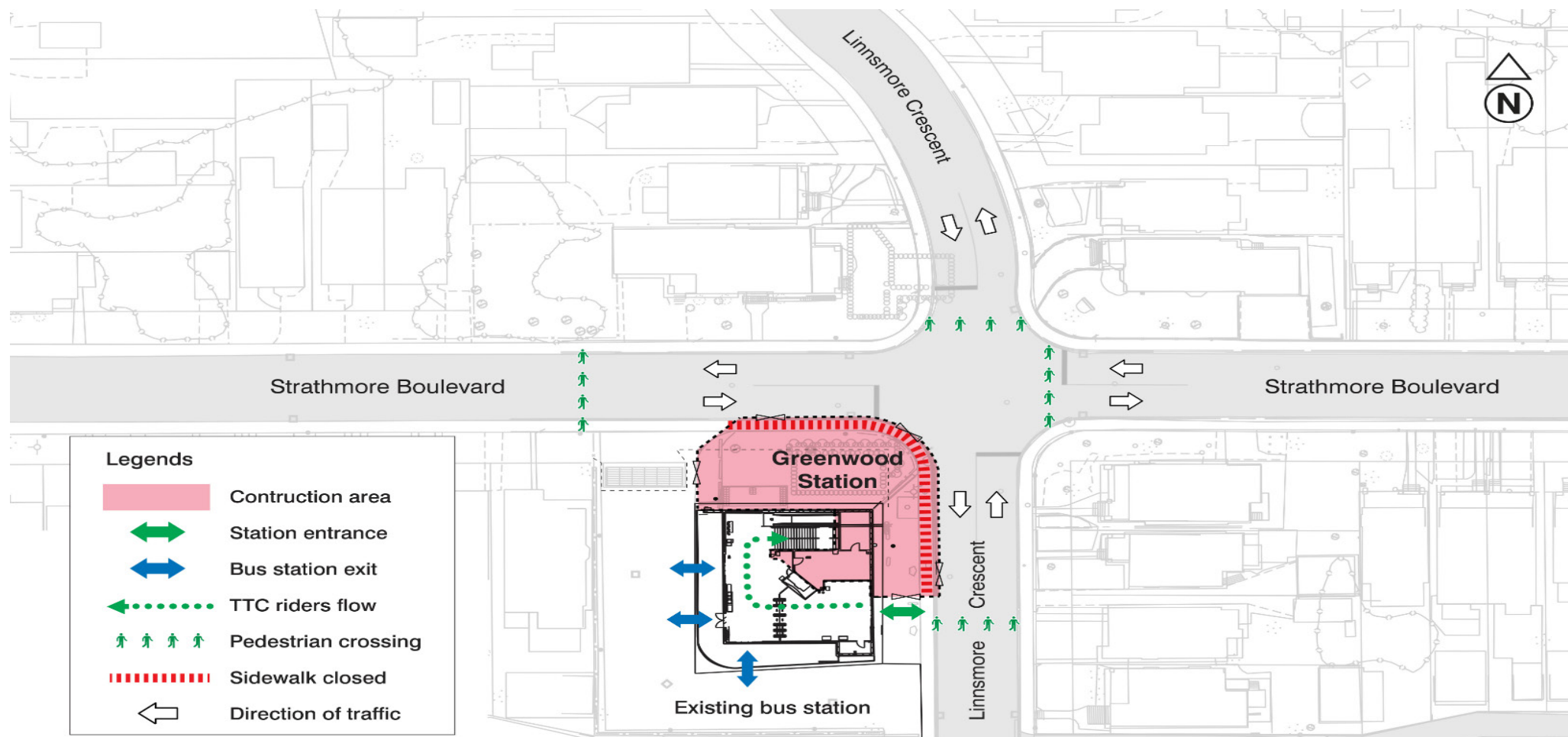


# Conceptual Staging - Phase 4 – Completed in Summer 2024



Plans are subject to change

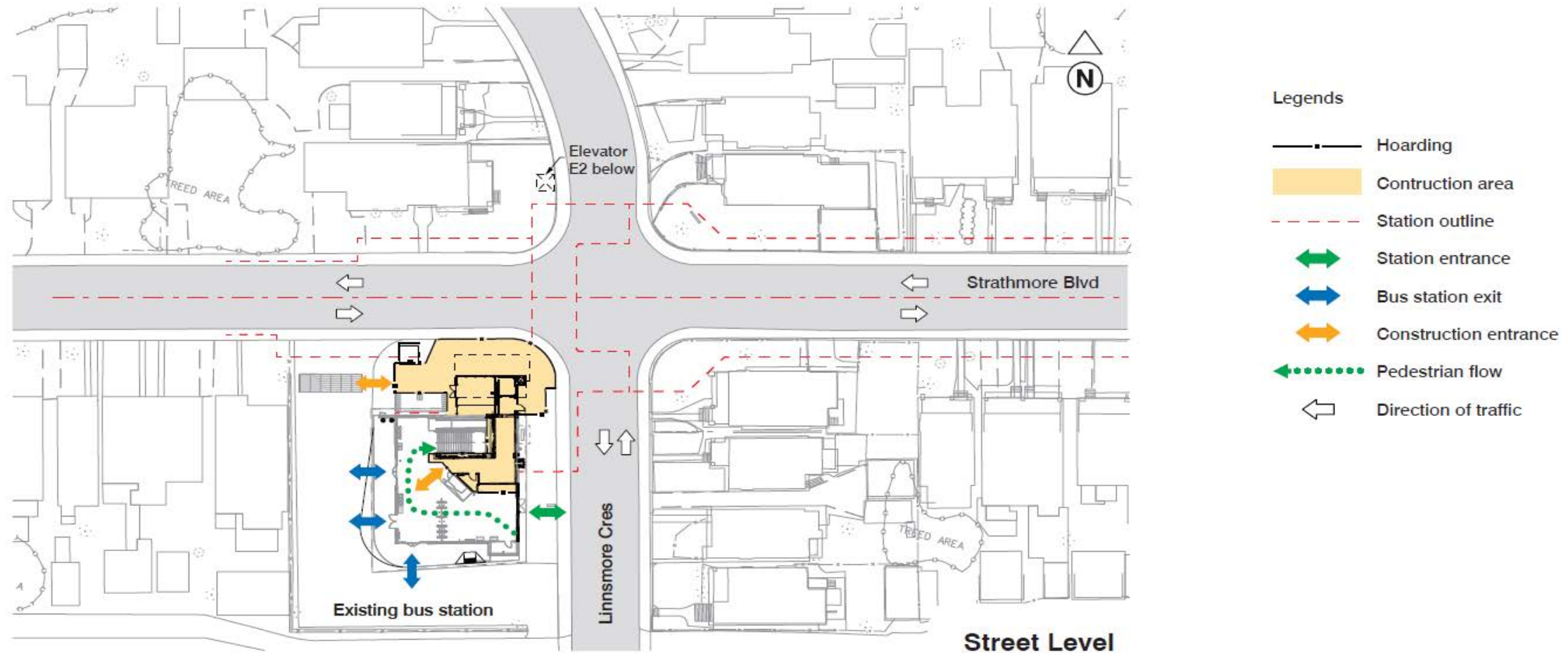
# Conceptual Staging - Phase 5 – Completed in December 2024



\*Pending weather, possible third party union strikes and unforeseen site conditions and events.

Plans are subject to change

# Conceptual Staging - Phase 6 – Estimated Completion in Summer 2025\*



\*Pending weather, possible third party union strikes and unforeseen site conditions and events.

Plans are subject to change



## Construction Progress – Key activities completed and planned for the Easier Access Project

Construction Activity	Status
<b>Stage 1:</b> <ul style="list-style-type: none"> <li>- Relocation of utilities</li> <li>- Tree removal/protection</li> <li>- Construction hoarding set up</li> <li>- Pedestrian and local traffic detours established</li> </ul>	Completed in early 2022
<b>Stage 2:</b> <ul style="list-style-type: none"> <li>- Linnsmore Cres., at Strathmore Blvd. closed</li> <li>- West sidewalk along Linnsmore Cres., north of Strathmore Blvd. closed to pedestrians</li> <li>- Relocation of utilities</li> </ul>	Completed in 2022
<b>Stage 3:</b> <ul style="list-style-type: none"> <li>- Caisson work ongoing</li> <li>- Bus loop closed at Greenwood Station, the 31 Greenwood buses diverted to Coxwell Station via Danforth Avenue and Coxwell Avenue</li> <li>- Sewer by-pass activities at Linnsmore Cres. Completed</li> </ul>	Completed in spring 2023
<b>Stage 4:</b> <ul style="list-style-type: none"> <li>- Excavation and other activities to build the elevator shafts and associated underground structures</li> <li>- Caisson work continues</li> <li>- Modifications in the interior of the station to accommodate the elevator requirements</li> <li>- Bus loop reopen at Greenwood station</li> <li>- Strathmore Blvd. restored for vehicular traffic</li> </ul>	Completed in summer 2024
<b>Stage 5:</b> <ul style="list-style-type: none"> <li>- Construction continues underground, on street level around the station building, and within the station.</li> <li>- Construction continues within the station building</li> </ul>	Elevators estimated to be in-service in mid-2025*
<b>Stage 6:</b> <ul style="list-style-type: none"> <li>- Complete all mechanical and electrical systems related to construction</li> <li>- Removal of hoarding</li> <li>- Elevators in-service</li> </ul>	Estimated to be completed in summer 2025

\*Pending weather, possible third-party union strikes and unforeseen site conditions and events.



# | Key Milestones

Key Milestones	Estimated Completion
Elevators in-service	Scheduled in mid-2025*

\*Pending weather, possible third party union strikes and unforeseen site conditions and events.



# | Construction Photos – August 2024 Progress Update



Photo: A section of the finished bus loop



Photo: A section of the finished bus loop



# | Construction Photos - August 2024 Progress Update



Photo: Sidewalk re-opened at Linnsmore Cres. and Strathmore Blvd.



Photo: Road restored for vehicular/pedestrian traffic at Linnsmore Cres. and Strathmore Blvd.

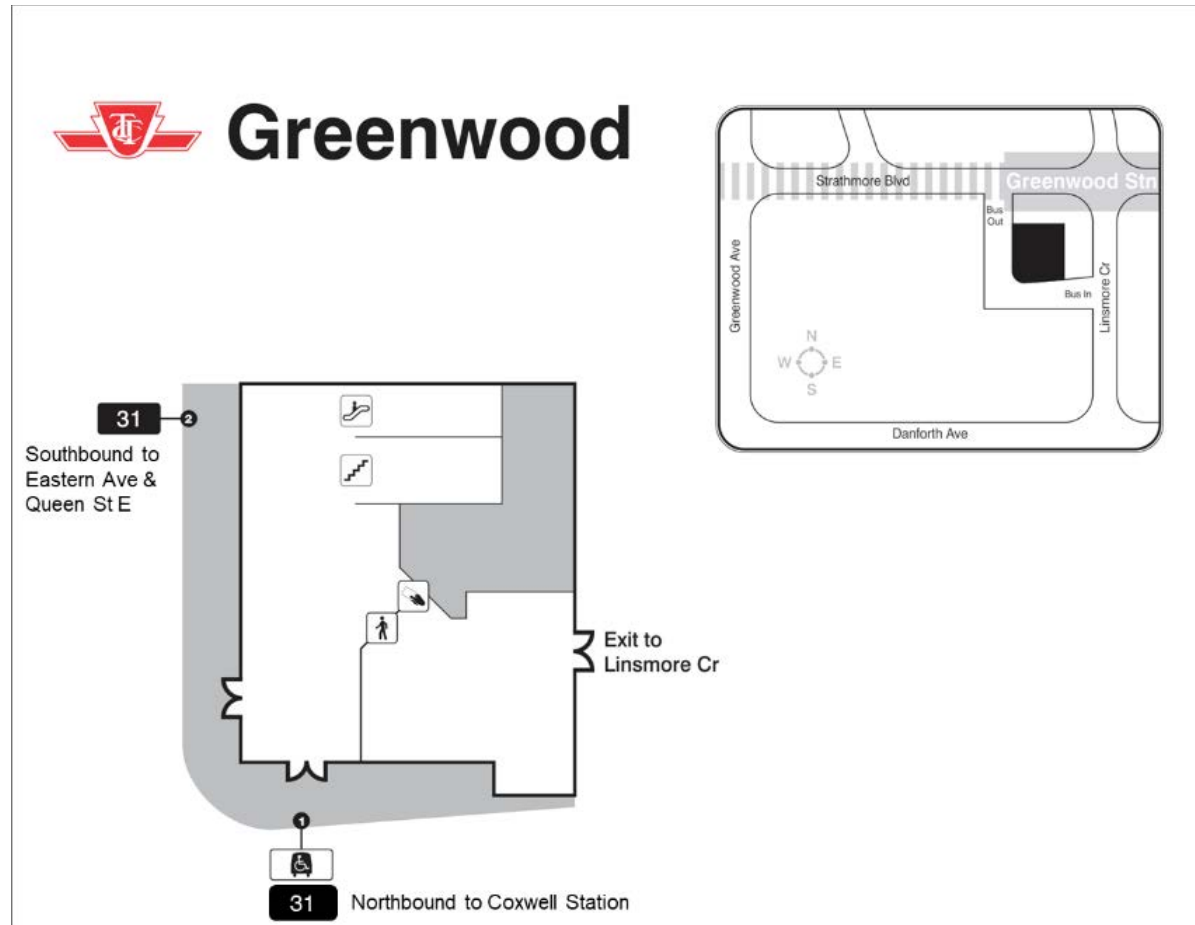
# | Strathmore & Linnsmore – Parking Impacts

- Available street parking will be reduced in the area of construction. If residents already have a street parking permit they may park on any licenced street within their permit area. Please see a map of the parking permit area here:  
[Permit parking area map of areas waitlisted or approaching capacity.](#)
- TTC has reached out to City of Toronto Transportation Services to create new temporary parking in the area during construction, where possible.

# | Transit Service and Traffic Impacts

- Access to the station will be maintained throughout construction.
- No impacts to subway service on Line 2 – Bloor Danforth.
- During some stages, pedestrian detours will be in place.

# | Transit Service and Traffic Impacts Continued



Customers will board 31 Greenwood buses inside Greenwood Station's bus loop. Service will continue to extend to Coxwell Station to provide an accessible connection for any customers requiring the assistance of elevators. Buses to Eastern Ave. and Queen St. East will board at Bay 2, while buses to Coxwell Station will board at Bay 1.



# | Construction

- The majority of work will take place between 7 a.m. and 7 p.m., as required.
- As permitted, some overnight and weekend work will be required during the course of this project in order to complete the work as quickly as possible.
- Noise, dust and vibration associated with construction is unavoidable with this work.
- Mitigation measures such as vibration monitoring, and mesh fencing (to reduce dust) is implemented.
- Construction trucks, equipment and workers are present in the general area.
- TTC Community Liaison will provide construction updates, coordinate responses to questions, coordinate meetings with neighbours and the project team.

# | The Danforth and Local Businesses

- Please note that this project does not take place on the Danforth.
- The laneway north of the Danforth will remain open and available. The laneway itself is under the City's jurisdiction. Please call 311 for any laneway concerns related to traffic, encroachment, maintenance and salting/snow removal.
- Area waste collection conducted by the City will continue as per their schedule.



# | Greenwood Station Public Art

- Greenwood Station will receive public art in accordance with the TTC Public Art Policy.
- An open call and pre-qualification will be issued; three artists will be selected per station to create and present an art concept.
- A jury from the Arts community will be formed including a member with ties to the neighbourhood.
- Art will be installed at a later date (TBD).

