



College Station Second Exit & Easier Access Projects

Construction Staging

Updated Spring 2025

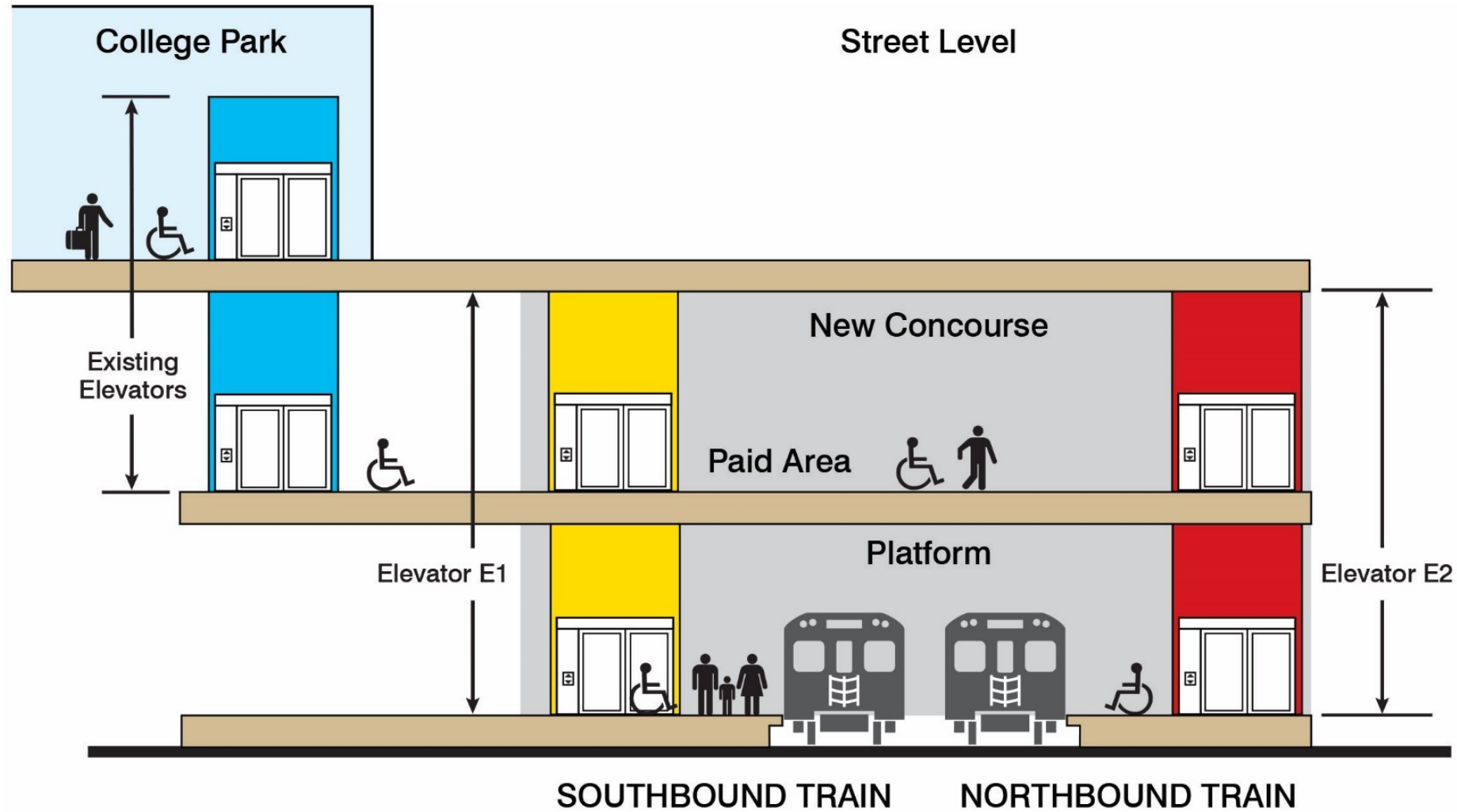
| Easier Access & Second Exit/Entrance

As part of the TTC's commitment to safety and modernization, College Station (Line 1) will be getting a new second exit/entrance, and elevators to improve customer safety, accessibility and convenience.

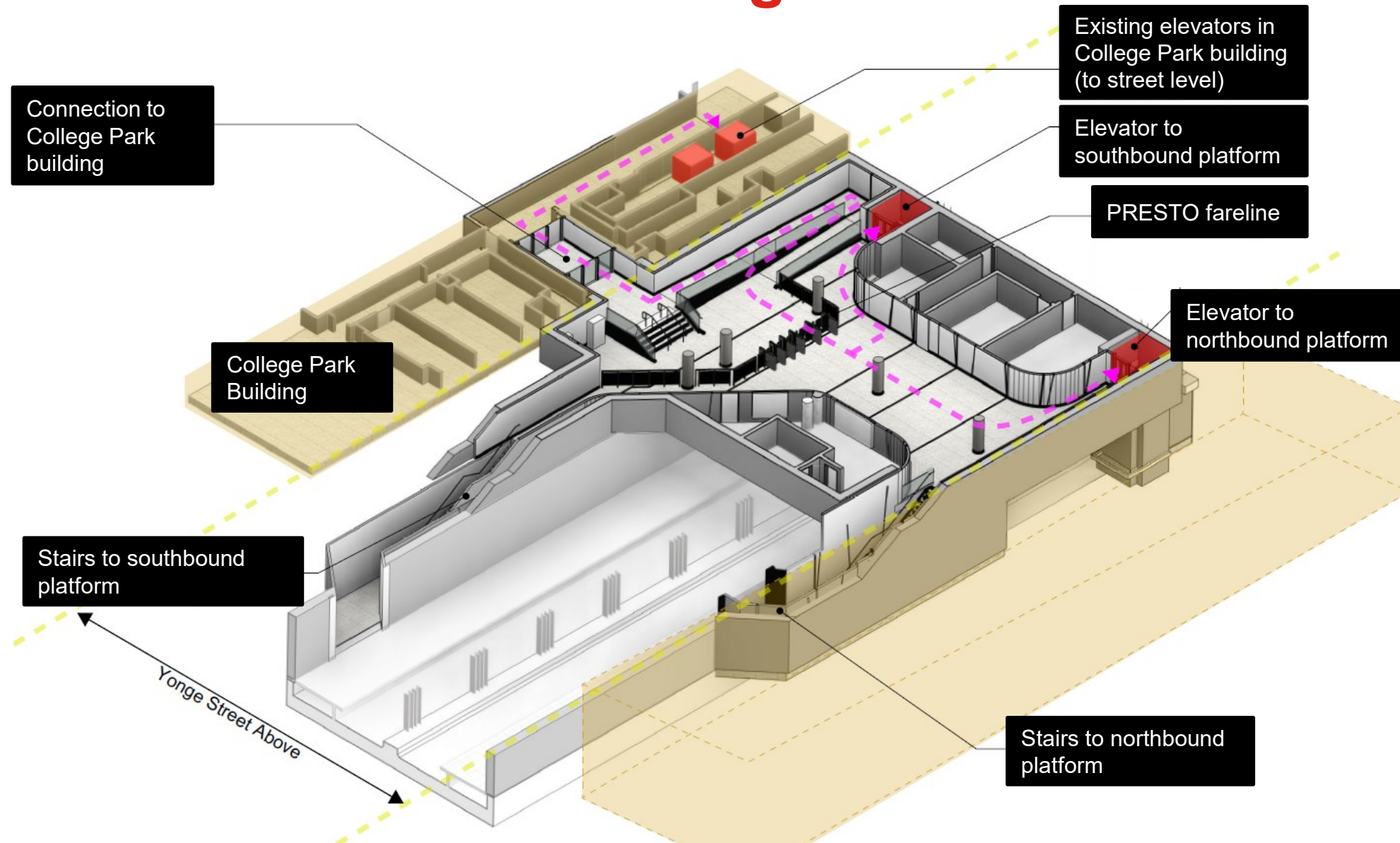
A **new concourse** will be constructed south of the existing concourse.

- The new concourse will combine elevators and a second exit through College Park.

Elevator Section Plan



Concourse Level Rendering



| College Station - Rendering

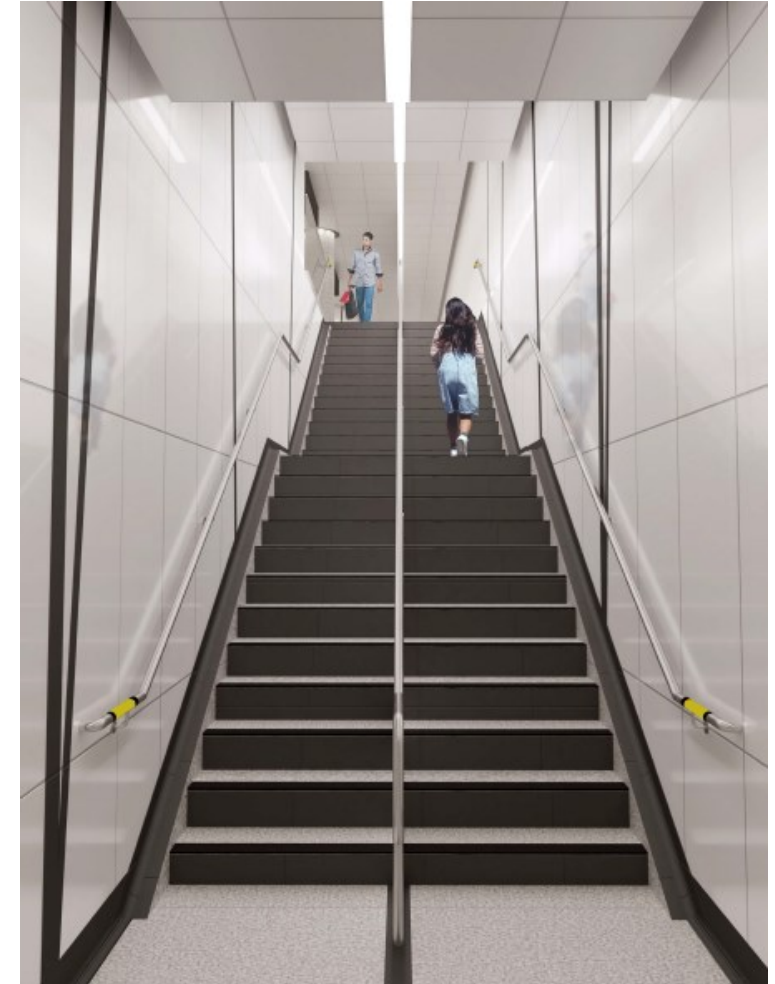


New concourse level

| College Station - Rendering



Easier access elevator – platform view



New staircase to platform level

| College Station → Project Progress Schedule

November 2020 - December 2020

Stage 1A **Completed**

December 2020 – April 2021

Stage 1B **Completed**

April 2021 – Fall 2023

Stage 2 **Completed**

December 2023 – Summer 2025

Stage 3 (**In Progress to Summer 2025**)

**Early 2025 –
Spring 2025**

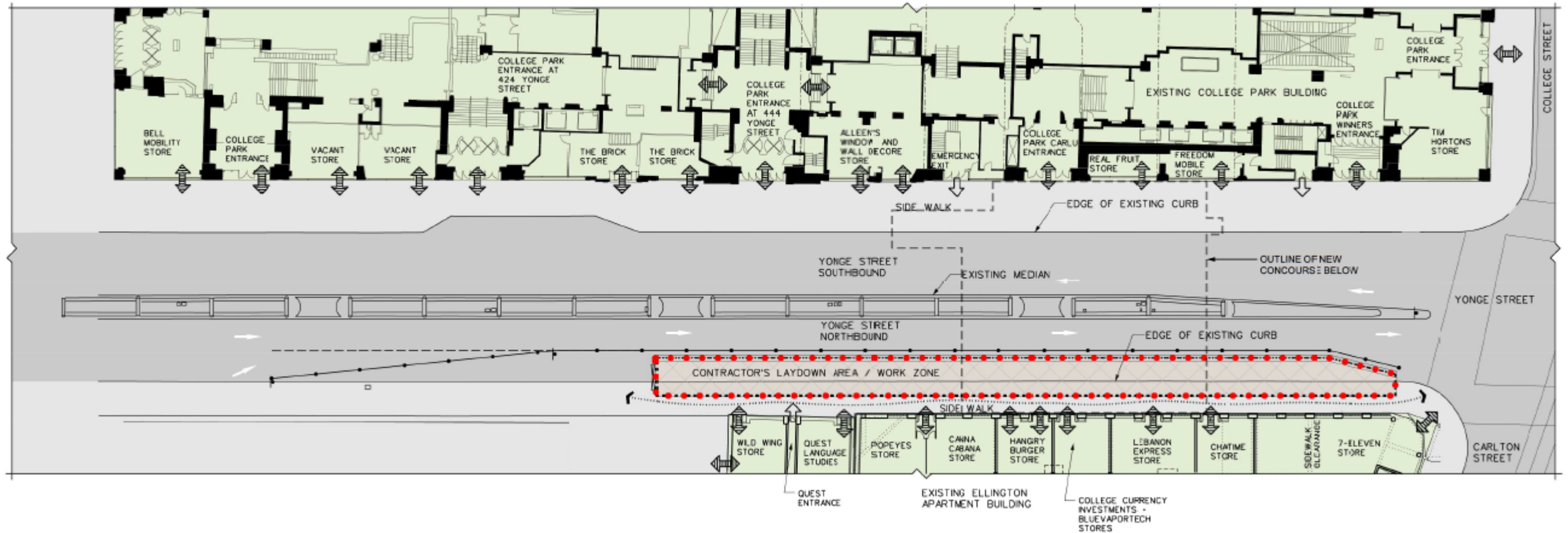
Stage 4 (**Expected**) Stage 3 and 4 work items being completed concurrently)

*Pending weather, possible third party labour disruption and unforeseen site conditions, circumstances, and events.



Construction Staging – Stage 1A (completed)

**Content accurate at time of printing*



| Stage 1A (completed) – Construction Photos



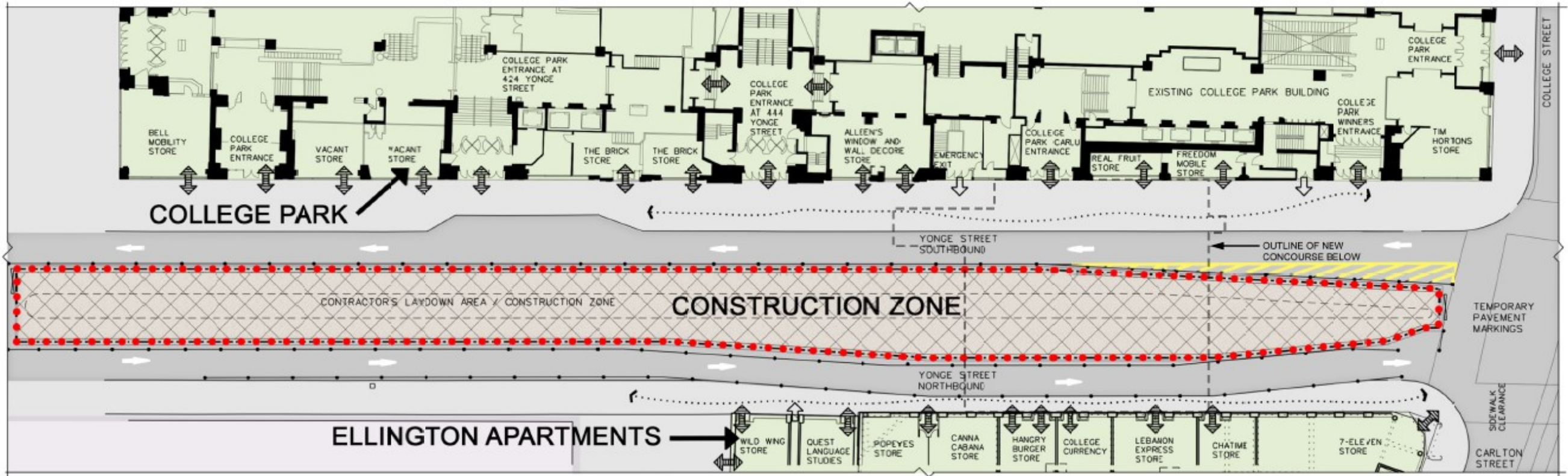
Photo of: Staging traffic for workers to access the site to complete curb work.



Photo of: Site enclosure where a portion of Yonge St. is closed in order to stage construction.

Construction Staging – Stage 1B (completed)

**Content accurate at time of printing*



| Stage 1B (completed) – Construction Photos

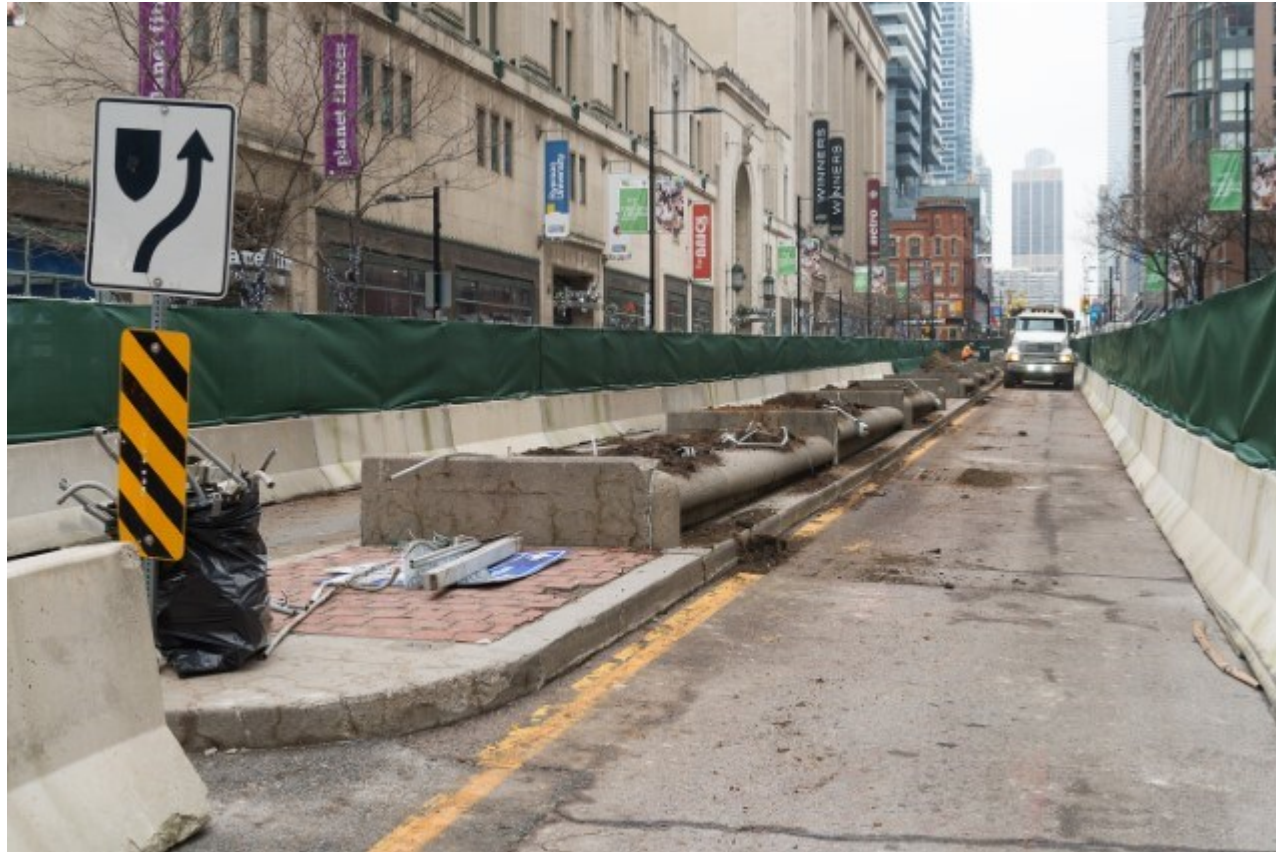


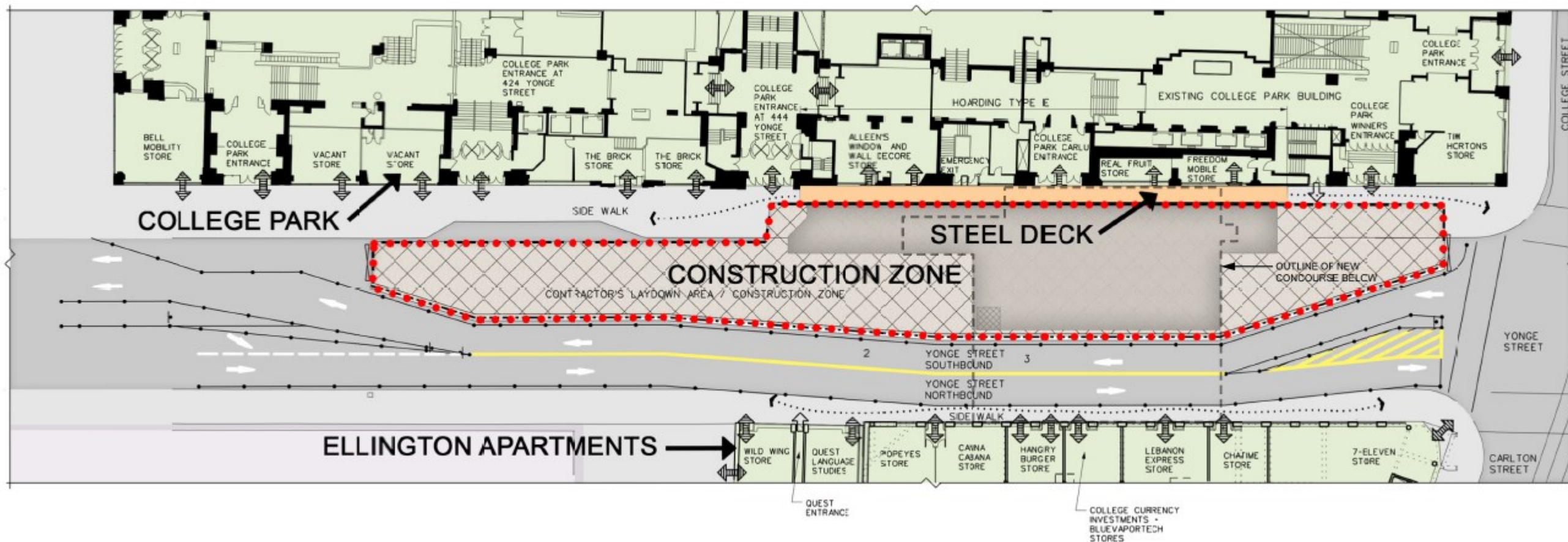
Photo of: Median Demolition – median to be removed down Yonge St. in order to start Stage 2 demolition and excavation.



Photo of: Exposed duct banks to be rerouted below ground – exposed conduits to be reattached and fitted with utilities such as telecommunications, internet, electrical etc.

Construction Staging – Stage 2 (in progress)

**Content accurate at time of printing*



| Stage 2 (in-progress) – Construction Photos (2021)



Photo of: Finger piles being placed on the north end of the site, to perform shoring support via timber piles.



Photo of: Piles being placed in order to support foundation for newly implemented elevators in the elevator pits (2 elevators in total).

| Stage 2 (in-progress) – Construction Photos (2022)



Photo of: Walers, struts and horizontal hollow steel section beams in order to support shoring for further excavation.



Photo of: Mud slab at the south end excavation to aid in the development of new concourse and stairs from platform level.

| Stage 2 (in-progress) – Construction Photos (2023)



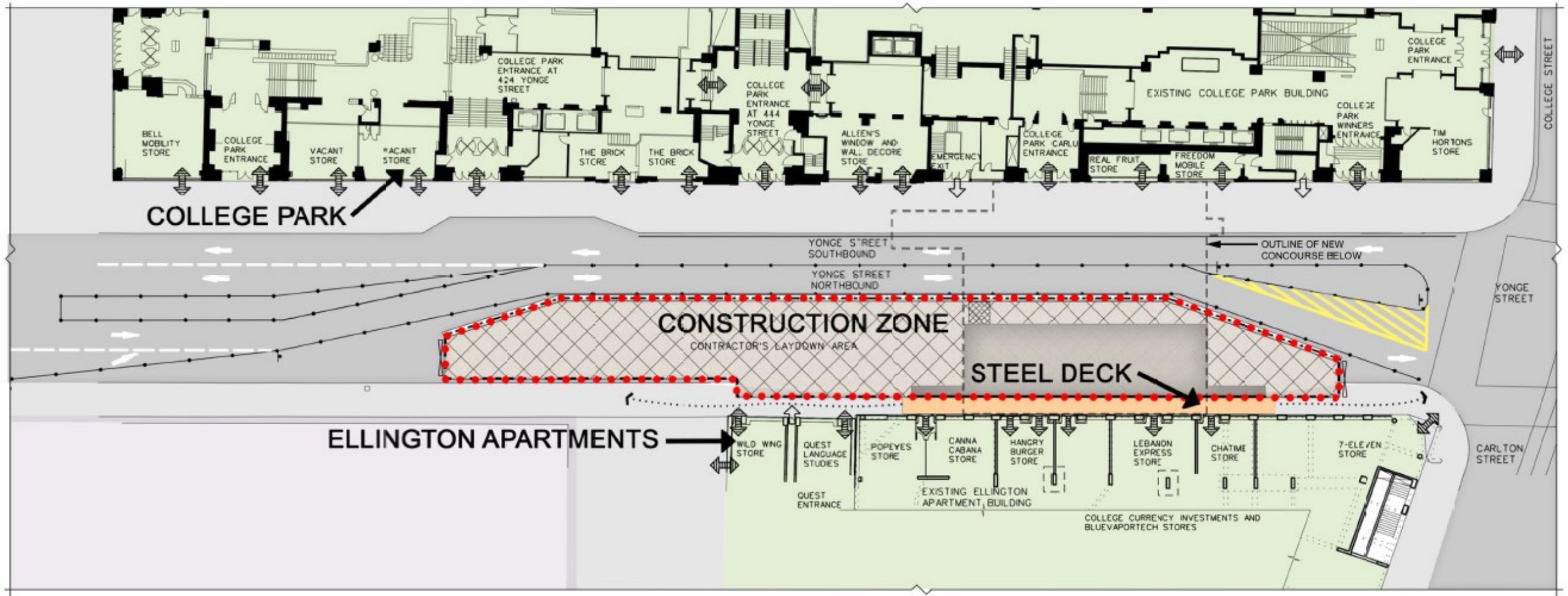
Photo of: North side/end elevator pit wall for slab to be poured on top of with concrete.



Photo of: Formwork and rebar around elevator pit – to be poured with concrete.

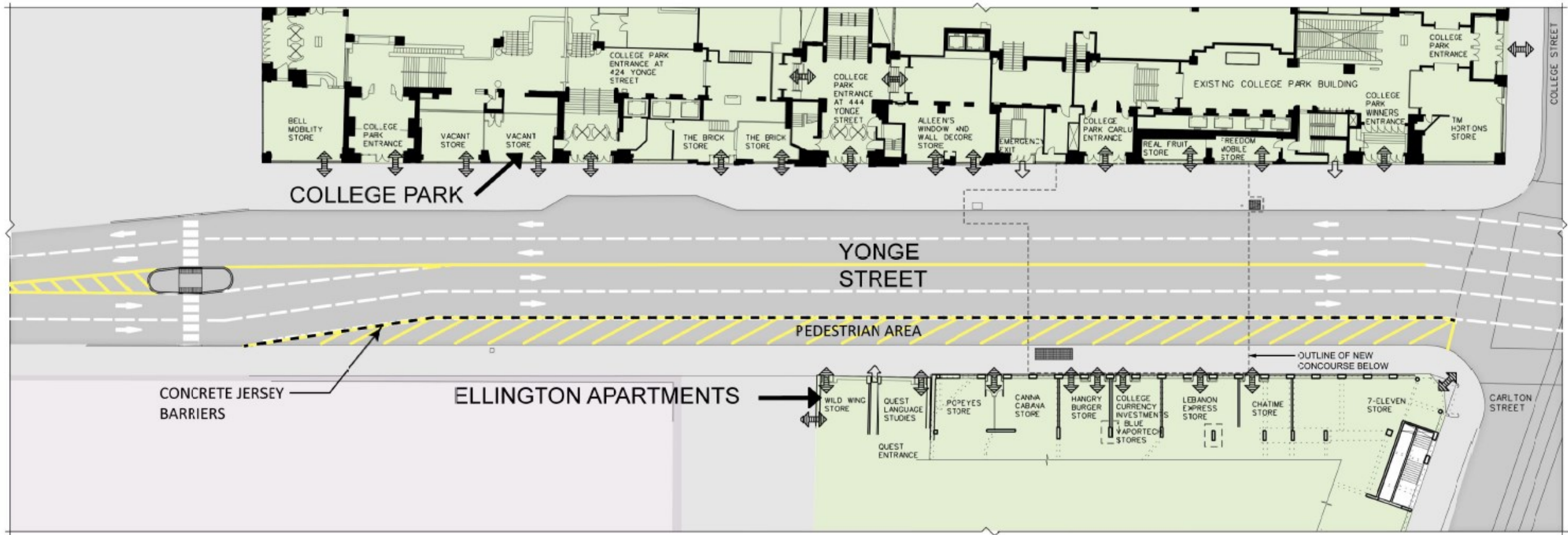
Construction Staging – Stage 3 Fall 2023 to July 2025

**Content accurate at time of printing*



Construction Staging – Stage 4 Fall 2023 to end of 2025

**Content accurate at time of printing*



New streetscape design to be developed as part of yongeTOmorrow by the City of Toronto

| Construction Planning

- Work to be completed in stages to maintain access to the local area, pedestrians, cyclists, and motorists.
- Safe pedestrian access will be maintained with sidewalk detours as required. Diversions will be clearly marked.
- Temporary road decking installed to maintain transit, sidewalks, and traffic through Yonge/College intersection.
- One lane of traffic in each direction will be maintained.
- Subway service is running throughout construction.



| Construction

- The majority of work will take place between 7:00 a.m. and 7:00 p.m., as required.
- As permitted, some overnight and weekend work will be required during the course of this project in order to complete the work safely.
- Noise, dust, and vibration associated with construction is unavoidable with this work.
- Mitigation measures such as vibration monitoring and mesh fencing (to reduce dust) will be implemented.
- Construction trucks, equipment and workers will be present in the general area.



| Contact

For updates on the project visit ttc.ca/projects [*Station Improvements*]

or contact:

Tyrell Ramsay

Community Liaison Officer, TTC

tyrell.ramsay@ttc.ca

(647) 473-9411