



# **Christie Station – Easier Access project update**

## **Public presentation**

Spring 2022

# Status of Easier Access program



- 55 stations are now accessible.
- Yorkdale was the latest station to become accessible in 2021.
- Easier access work continues at the following stations:
  - Donlands, College, Summerhill, Yorkdale, Glencairn, Castle Frank, Rosedale, Dupont, Greenwood and Lansdowne.
- In 2022, the TTC is scheduled to begin Easier Access construction at the following stations:
  - **Christie**, Lawrence, Museum, Spadina, High Park, King, Old Mill, and Warden (concourse and platform elevators only).

# Advisory Committee on Accessible Transit (ACAT)



## ACAT Overview

- Toronto citizens who advise the TTC on difficulties faced by people with disabilities and seniors.
- Recommends the elimination of barriers to accessible public transit in the City of Toronto.
- ACAT consists of 15 volunteer committee members who are appointed by the TTC Board.

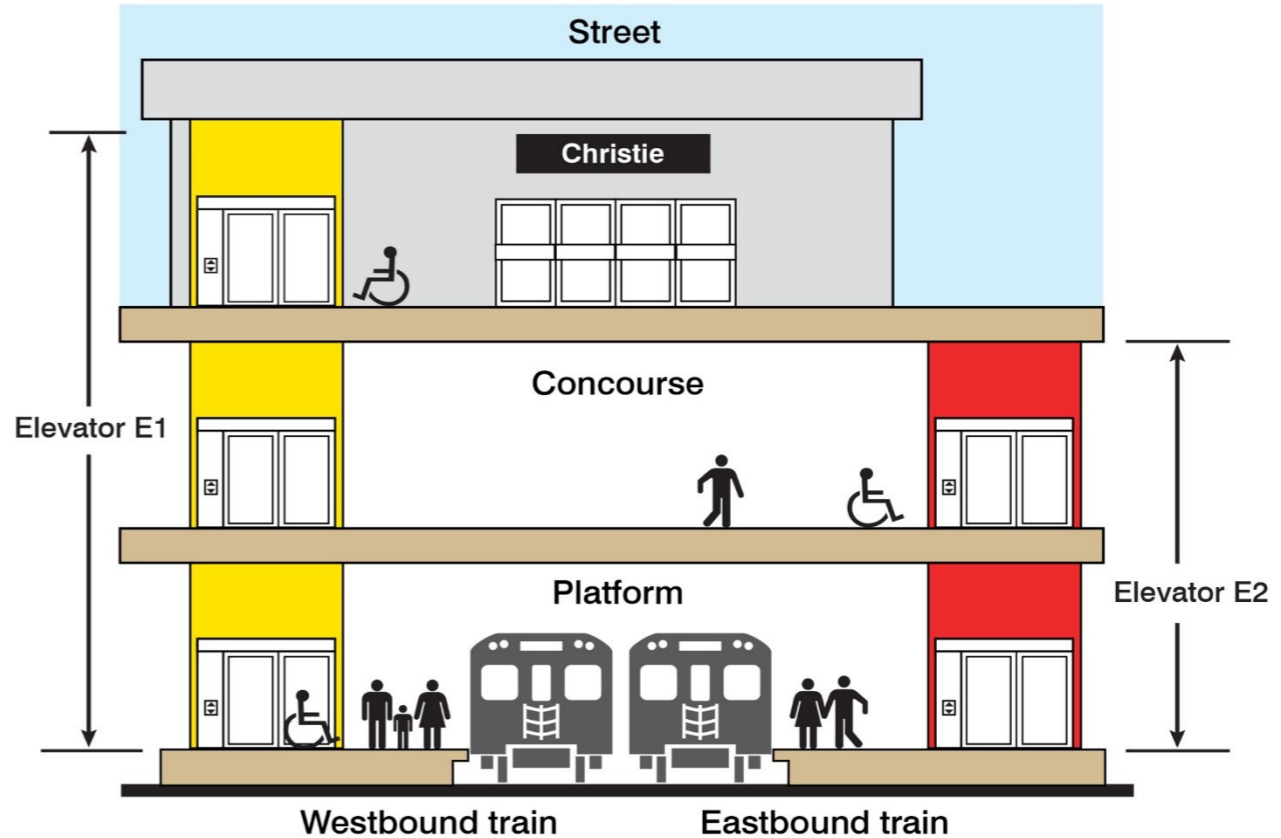
## ACAT's Role

- Represents the needs and concerns of persons with disabilities and seniors who use public transit services provided by the TTC.
- Advises the TTC on the provision of accessible public transit.
- Advises the TTC on necessary policy issues for services that pertain to the interests of persons with disabilities and seniors.
- Supports TTC staff in consulting, educating and advising persons with disabilities, seniors and the community at large.
- Subcommittees: Design Review, Service Planning, Communications, Wheel-Trans Operations.
- Advises the TTC on priority and plans for Easier Access projects.



# Easier Access Program

- Program to make all stations accessible
- Elevators, sliding doors, accessible fare-gates
- Elevator (E1) is accessible from the main station entrance at street-level and the elevator (E2) is accessible from the concourse level.



Christie Station elevator cross section image

# Christie Station elevator site plan



**E1** – Elevator for street-to-concourse-to westbound subway and a new extension/lobby area will be built at street-level).

**E2** – Elevator for concourse-to eastbound subway (to be built underground, accessible from concourse level only).

# | Christie Station - Easier Access Project

The TTC's Easier Access Program is making subway stations accessible. Construction at Christie Station started on June 6, 2022.

This work will include barrier-free path from the main entrance to all levels of the station comprising of:

- Two forward motion elevators to serve the street and concourse level, westbound and eastbound platforms
- Tactile walking surface indicators added to the top landing of stairs and platforms
- Curb ramp at bus stop outside of the station (serving TTC Route 126 on Christie Street (proof of payment required for subway/bus transfer))
- Automatic sliding doors
- Improved signage



# Construction details and transit information

- Transit service will not be disrupted by construction.
- Bus connections to TTC Route 126 on Christie Street will be maintained.
- Detours may be in place, however, pedestrian access will be maintained.
- Installation of hoarding and exit pathways will be created in the Erlichman laneway.
- The vehicle access through the laneway from Christie Street and the private parking lot at the rear of the station will be closed for the duration of the construction.
- The Contractor will arrange for snow removal (within the construction site) and accommodate deliveries (adjacent to the construction site).
- An emergency pathway will be maintained along the laneway.
- In Phase 4, specific properties (where affected by construction) have arranged to move their bins to a specific area within the Erlichman laneway for pick up.



## Green P parking lot 144/376 Clinton Street

- Parking on the Green P lot 144/376 Clinton Street will be available during construction, however a portion of the lot will be reduced for at least 2 years\* to accommodate the future construction area for the elevators:
  - Private parking displaced by construction will be accommodated for in the Green P.
  - Up to 7 spots will be available for public parking.
  - There will be no through-traffic in the Erlichman laneway between Clinton Street and Christie Street.
  - Green P lot is only accessible from Clinton St. during construction.

\*weather and labour disruption pending, content/timeline accurate at time of printing/posting



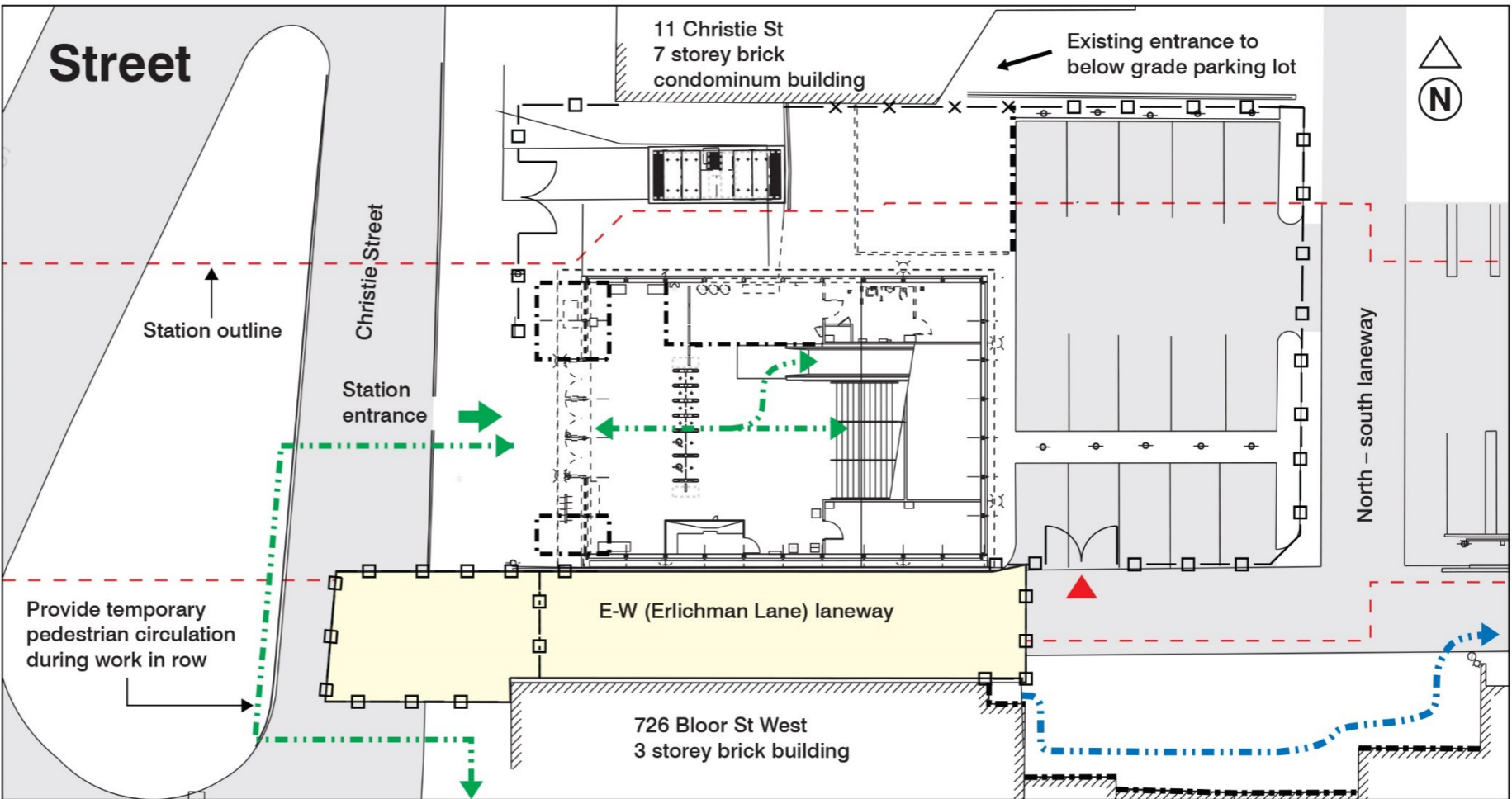
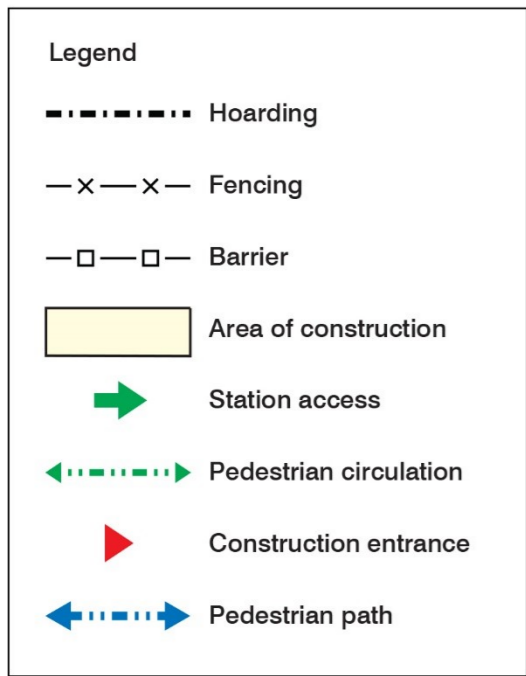


# Conceptual staging plans

- The following slides include conceptual staging plans - provided for illustrative purposes only.
- **Plans are subject to change** as information and the construction planning is finalized by the Contractor and later approved by the City of Toronto, Transportation Services and Toronto Water (and other utility service providers).
- Some phases may have overlapping work and may be combined, modified and timelines may overlap and change depending on site conditions and permits, weather and labour disruptions. Content and timeline accurate at time of printing/posting.



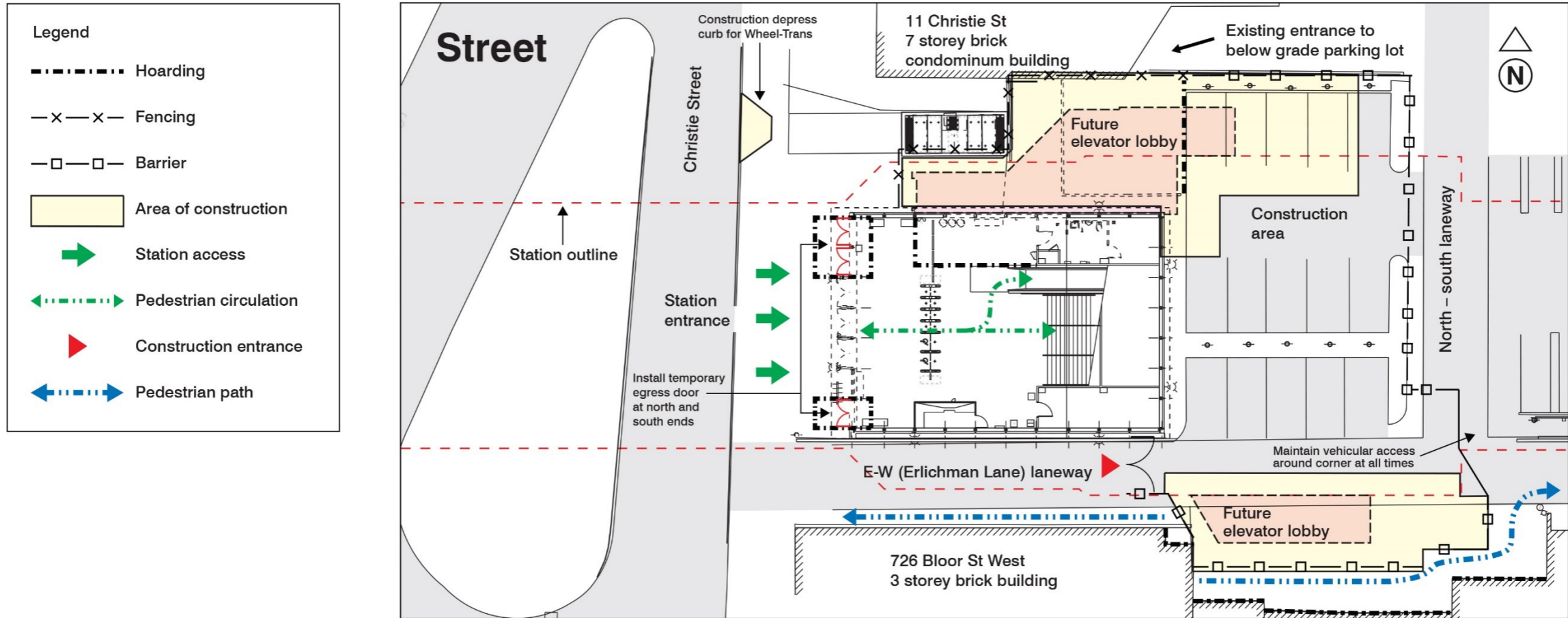
# Conceptual Staging - Phase 1 & 2 (approx. 2 months)



Work includes: Fencing, Hoarding, mobilizing construction site. Work within Christie Street Right of Way and Erlichman laneway, TPA parking Lot, vehicle access to the laneway is only from Clinton Street. An emergency pathway will be maintained along the laneway adjacent to the rear of the businesses.

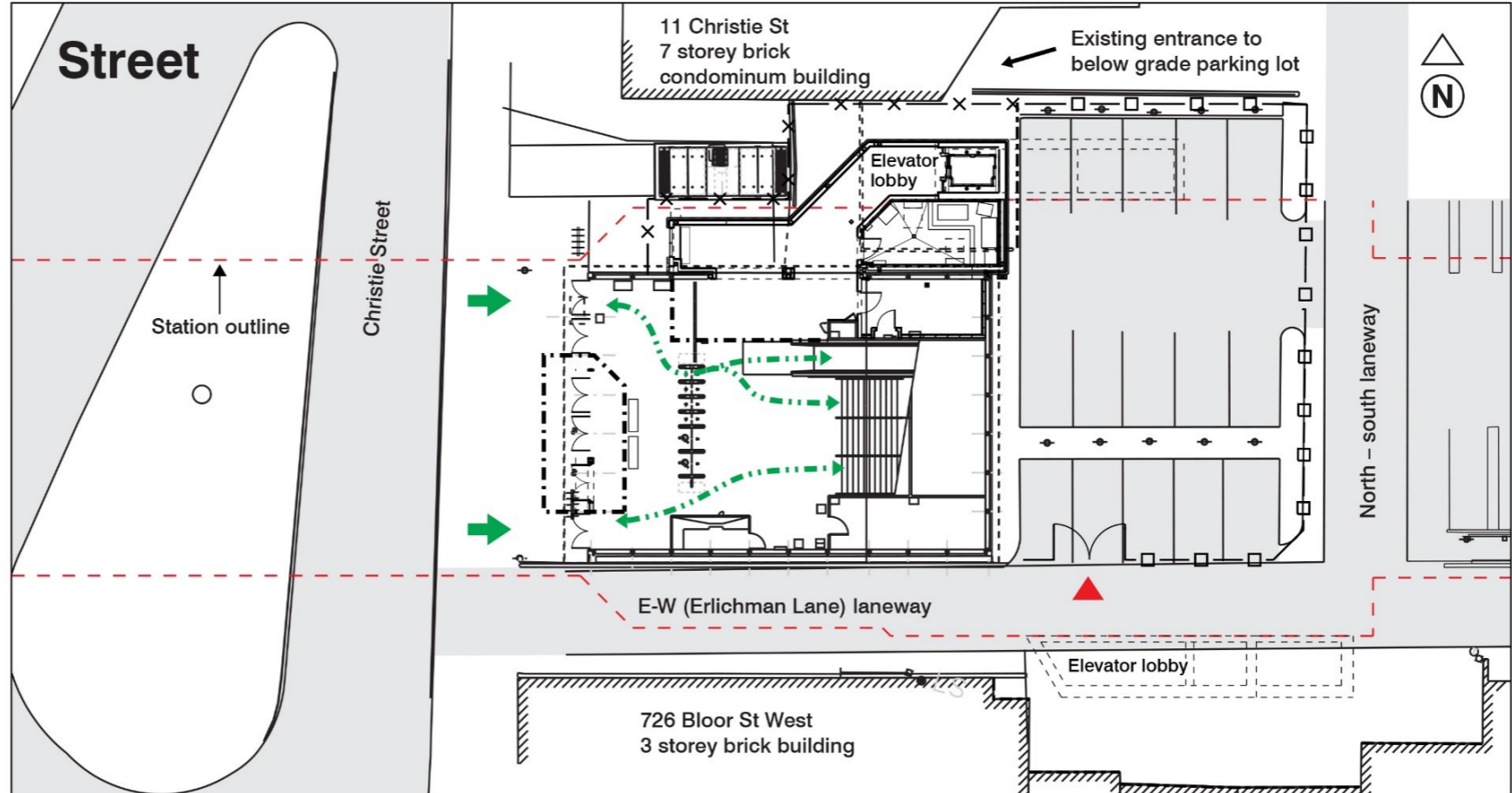
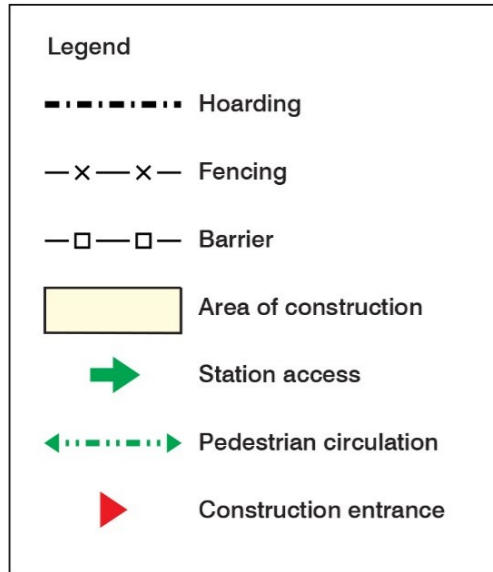


# Conceptual Staging - Phase 3 & 4 (approx. 13 months)



Work includes: Renovating inside Christie Station at Street Level in Station, Relocating Bicycle rack, Excavation E1 and E2, Installation of Shoring, Installation of Temporary Doors. An emergency pathway will be maintained along the laneway adjacent to the rear of the businesses.

# Conceptual Staging - Phase 5,6,7,8 (approx. 11 months)



Work includes: Concourse Platform level elevator Lobby opening in Walls, Elevator Installation and final touches.  
Reinstatement of private lot and Green P lot.



## Bloor St. and local businesses

- While the project benefits the community in the long-term, we understand that construction can be disruptive and are pleased to work with the BIA (Business Improvement Area) and local businesses to convey the message that businesses are open during construction.
- This project does not take place on Bloor St. and parking on Bloor St. will not be impacted by this project.
- The Green P lot (southwest corner) will be temporarily modified to maintain access to the laneway.
- Erlichman laneway itself is under the City's jurisdiction. Please call 311 for any laneway concerns related to traffic, encroachment, maintenance and salting/snow removal.
- Area waste collection conducted by the City will continue as per their current schedule.



# Construction

- The majority of work will take place between 7 a.m. and 7 p.m., as required.
- As permitted, some overnight and weekend work will be required during the course of this project in order to complete the work as quickly as possible.
- Noise, dust and vibration associated with construction is unavoidable with this work.
- Mitigation measures such as vibration monitoring, and wet cutting of concrete and mesh fencing (to reduce dust) will be implemented.
- Construction trucks, equipment and workers will be present in the general area.
- Bike parking to be temporarily removed or relocated if possible.
- TTC Community Liaison will provide construction updates, coordinate responses to questions, coordinate meetings with neighbours and the project team.



## Christie Station public art

- Christie Station will receive public art in accordance with the TTC Public Art Policy.
- An open call was issued and a short list of three artists has been chosen to prepare and present an art concept for Christie Station.
- A Jury from the Arts Community will select the winning art concept. A member of the Jury will have ties to the neighbourhood.
- Art will be installed at a later date (TBD).



