



Museum Station Easier Access and Second Entrance/Exit

Public Presentation




June 2022

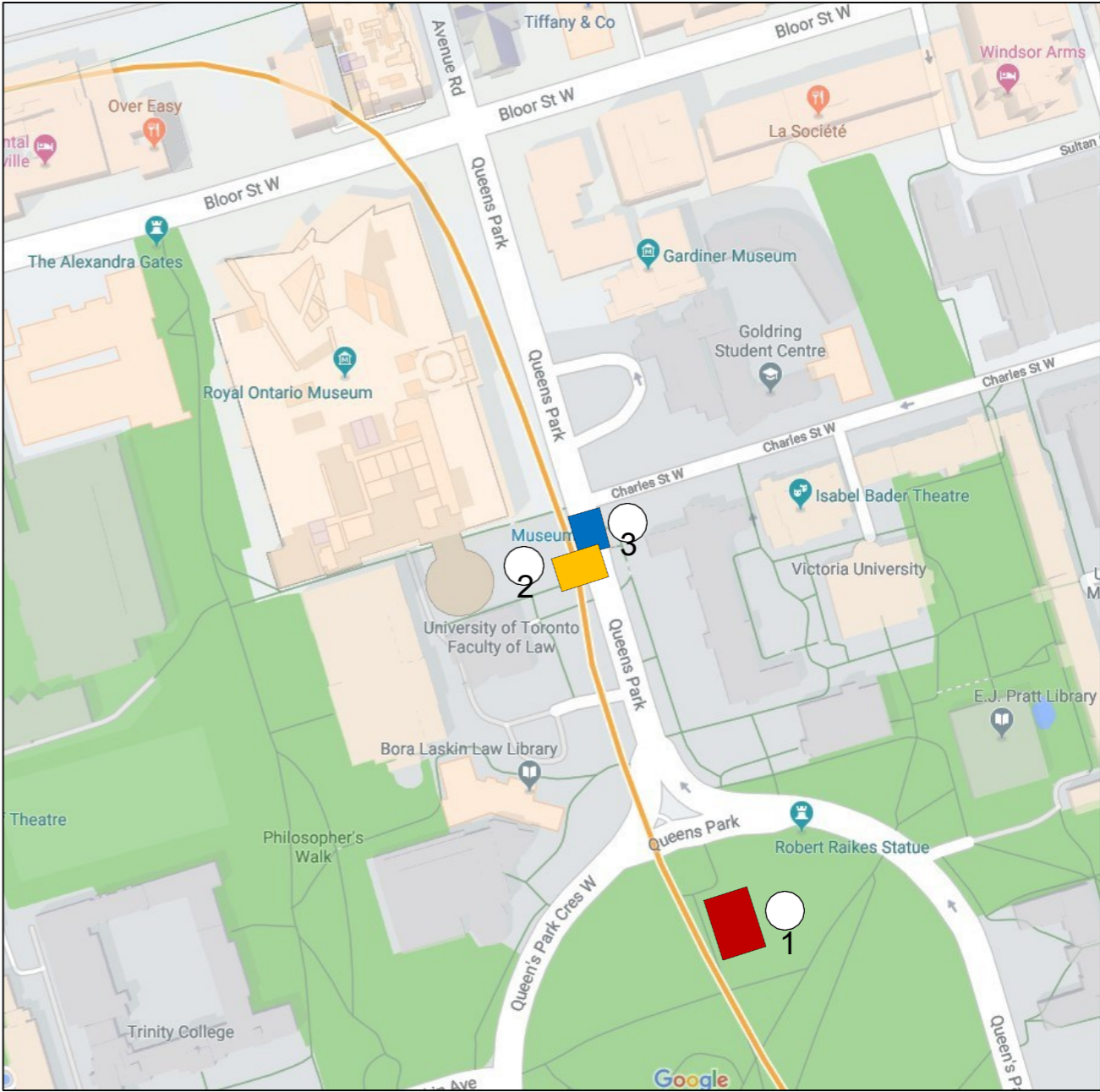
New Second Entrance/Exit for Museum Station



Background

Three projects will be underway at Museum Station starting July 2022 and ending in Q3 2024*:

-  1) Second Entrance/Exit
-  2) Easier Access – accessible upgrades
-  3) Rehabilitation of subway roof structure



Second Entrance/Exit

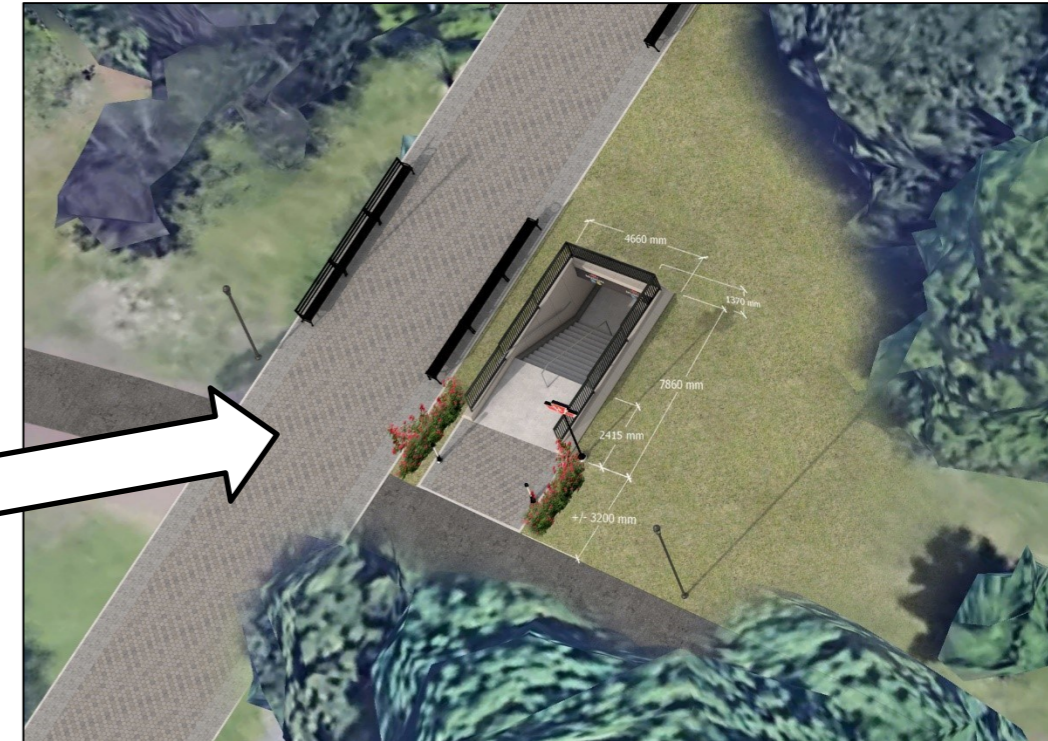
- Museum Station currently only has entrances and exits at the north end of the station.
- Adding a second exit/entrance at the south end of the station within Queen's Park will enhance customer safety.
- New second exit/entrance will be built in north end of Queen's Park.



Existing stairway entrance/exit at Museum Station

Queens Park North – second entrance/exit renderings

Aerial view of north end of Queen's Park Circle



Close-up of new second entrance/exit

Queen's Park Circle – second entrance/exit renderings

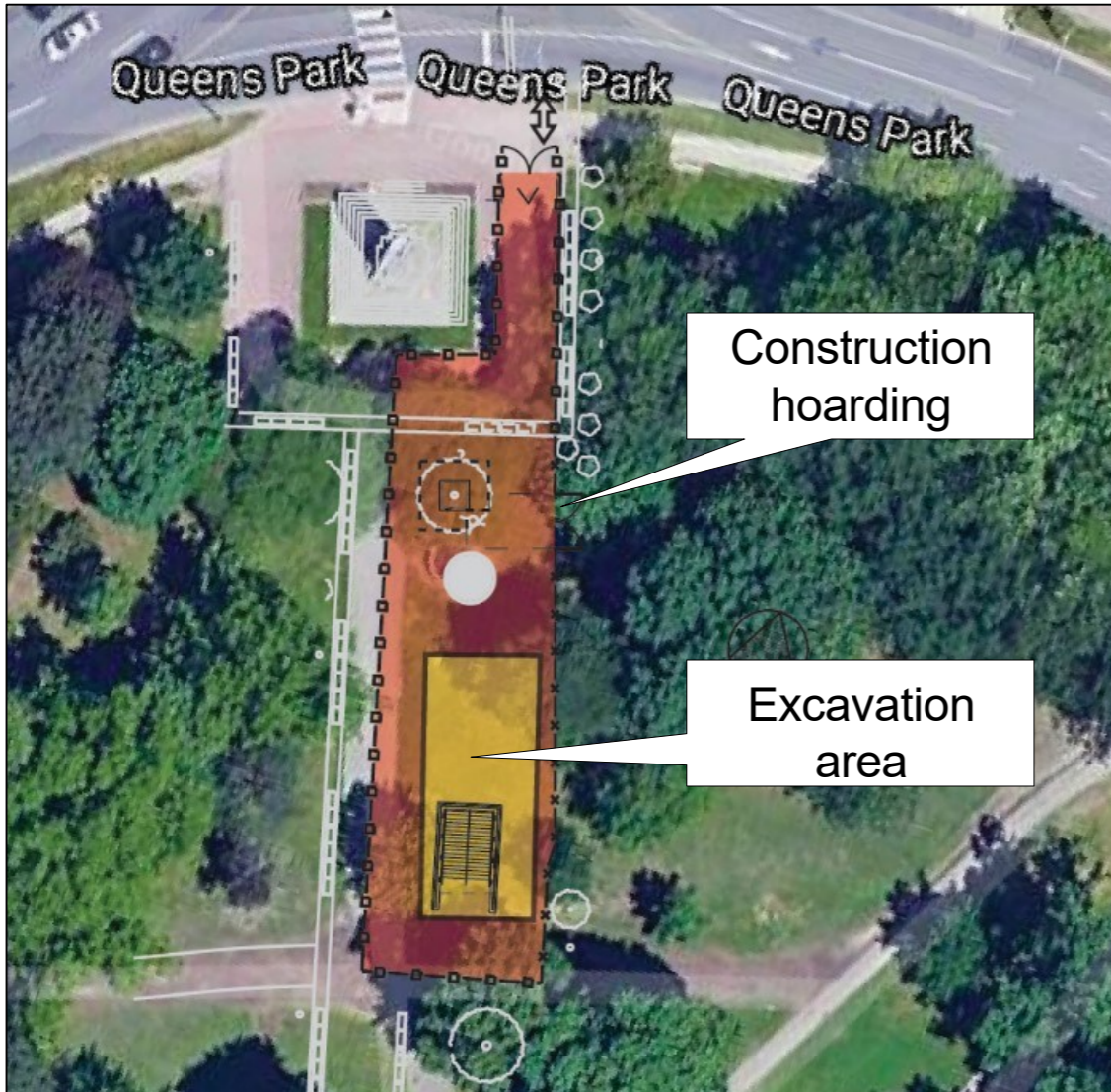
Looking south towards the Ontario Legislative Building



Looking north west towards Jackman Law Building

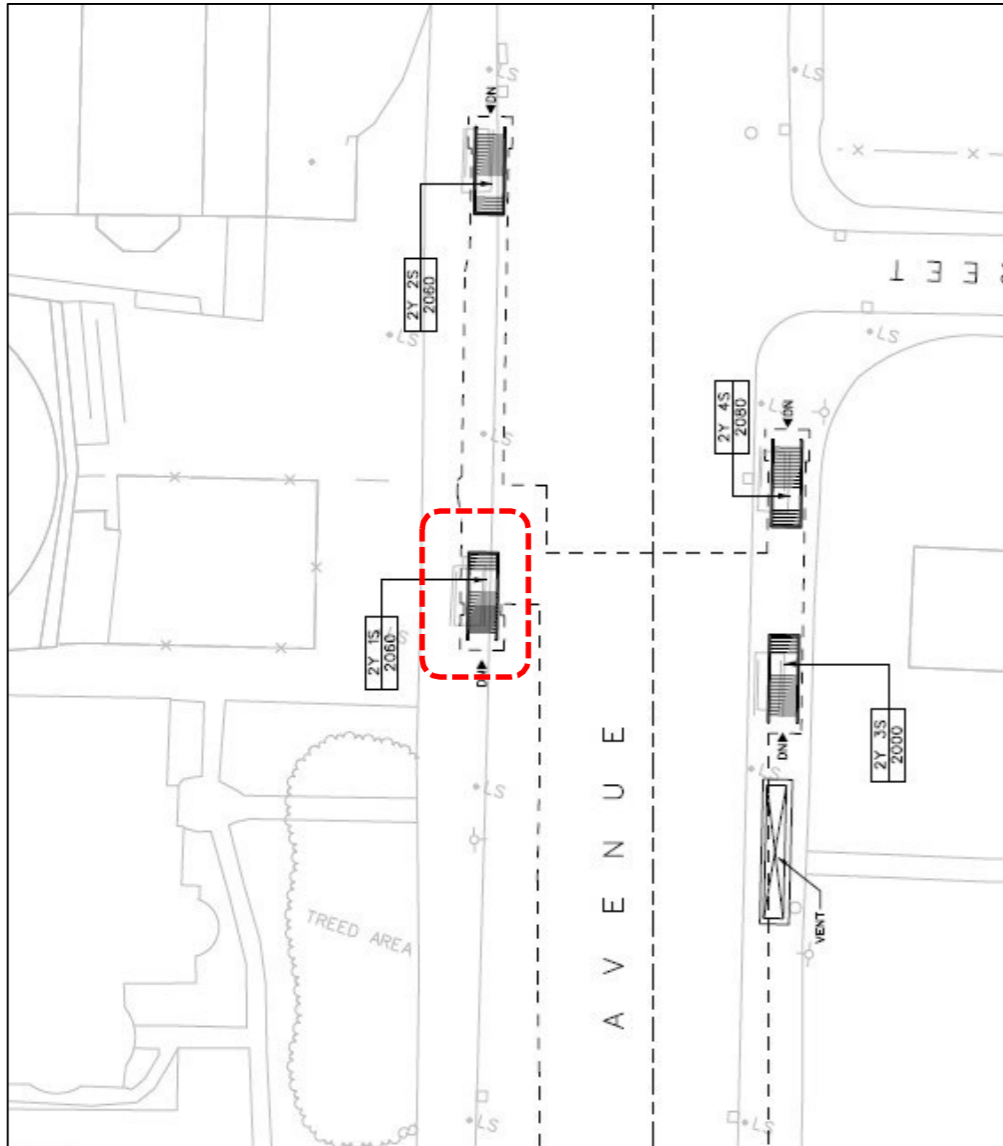


Construction staging – starting July 2022

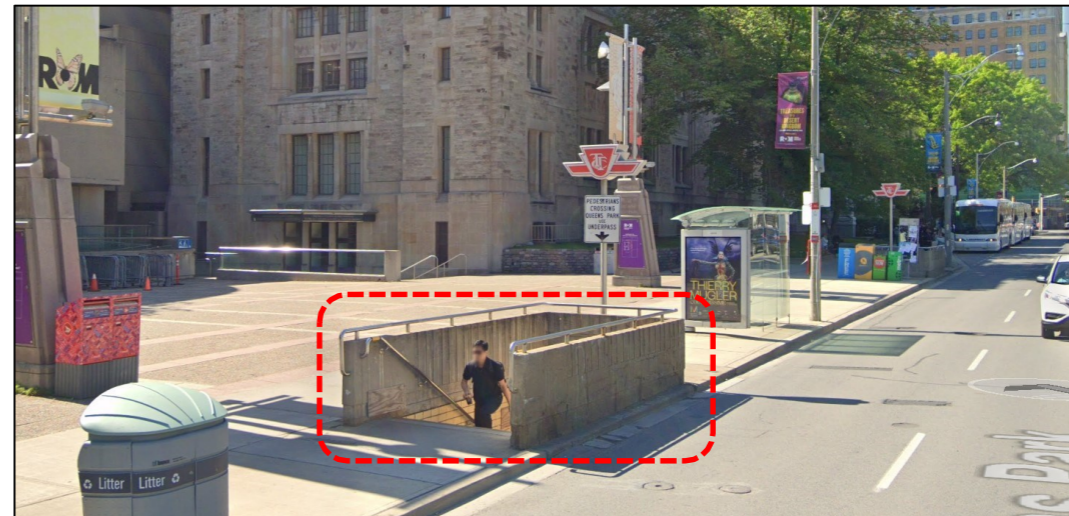


- Pedestrian movement north-south across the park and adjacent to work zone will be maintained
- Clear pedestrian signage will be installed.
- Construction vehicles and equipment will enter from the north
- Trees will be protected or transplanted and relocated as required
- Furniture, pavers, landscaping will be restored at the end of construction

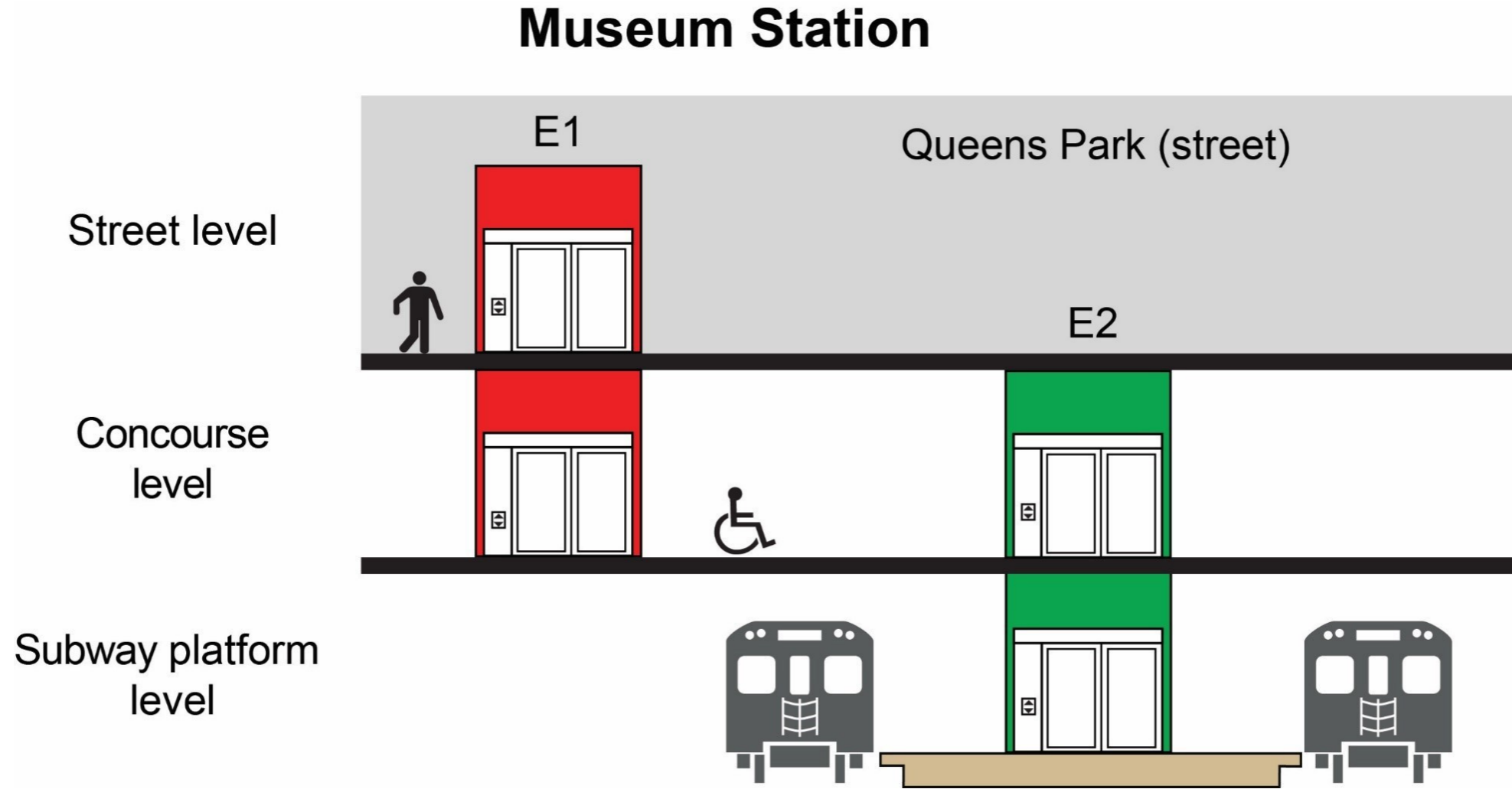
Museum Station – elevator at street level

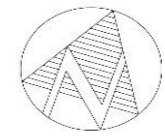


Existing south stairs on west side will be permanently closed and reconstructed to house new elevator structure – street level to concourse (E1)



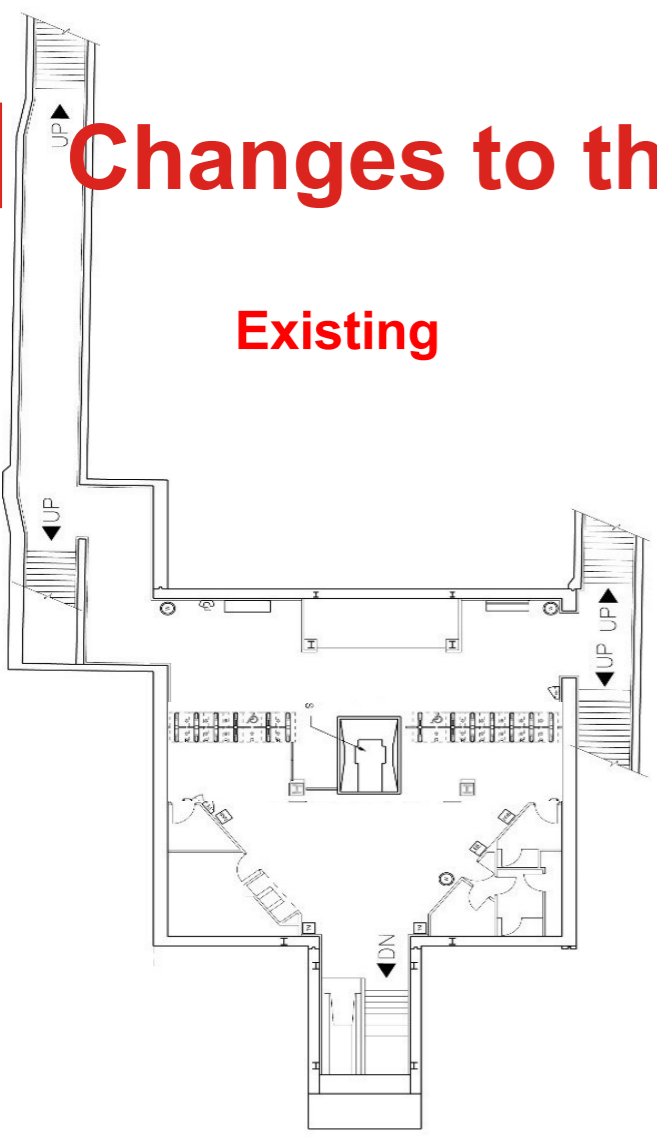
Museum Station Elevator Plan





Changes to the concourse level

Existing

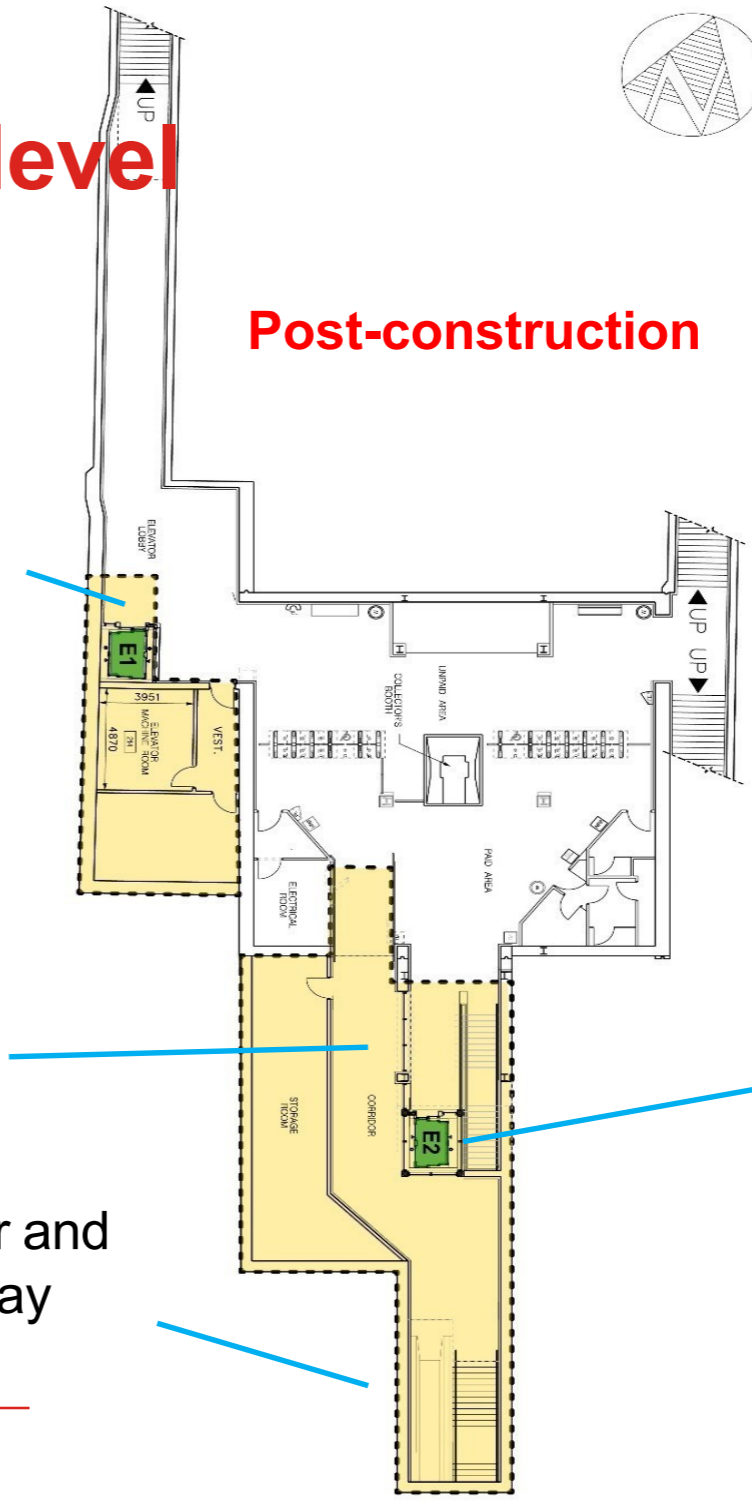


Post-construction

Existing stairs on west side converted to new elevator (street to concourse)

New ramp and corridor

New escalator and stairs to subway platform level



- Existing escalator replaced with new elevator (concourse to subway platform)
- Stairs reconstructed



Changes to the concourse level

- Many structural elements at the concourse level will be reconstructed, including:
 - Constructing two elevators – street to concourse (E1) and concourse to subway platform (E2)
 - Removing an existing escalator to make way for E2 elevator
 - Constructing new staircase and escalator.

Changes to the concourse level

- To complete this concourse work safely, the existing north entrances to Museum Station will be closed for approximately 8 months in 2023 – timing to be confirmed and communicated in advance.
 - This closure will take place **after** the new second entrance/exit is open.
 - All customers will be directed to the new Queen's Park Circle entrance.



New second entrance/exit at north end of Queen's Park Circle

| Structural Rehab

- The station roof below Queen's Park (street) requires rehabilitation and waterproofing.
- Will occur concurrently with Easier Access work and temporary lane closures on Queen's Park

Temporary pedestrian crossing closures

- During work hours, temporary closures of the north pedestrian crossing are expected when work vehicles are entering/exiting the work zone.
- Flagpersons will assist pedestrians as required.



North end of Queen's Park Circle, looking east

Status of Easier Access Program



TTC's Easier Access Program will make all subway stations accessible to everyone. Today, more than half of our stations are accessible to people with disabilities.

- 55 stations are now accessible.
- Station accessibility construction is currently underway at:
 - Donlands, College, Summerhill, Yorkdale, Glencairn, Castle Frank, Rosedale, Dupont, Greenwood, and Lansdowne.

All stations will be made accessible by 2025.

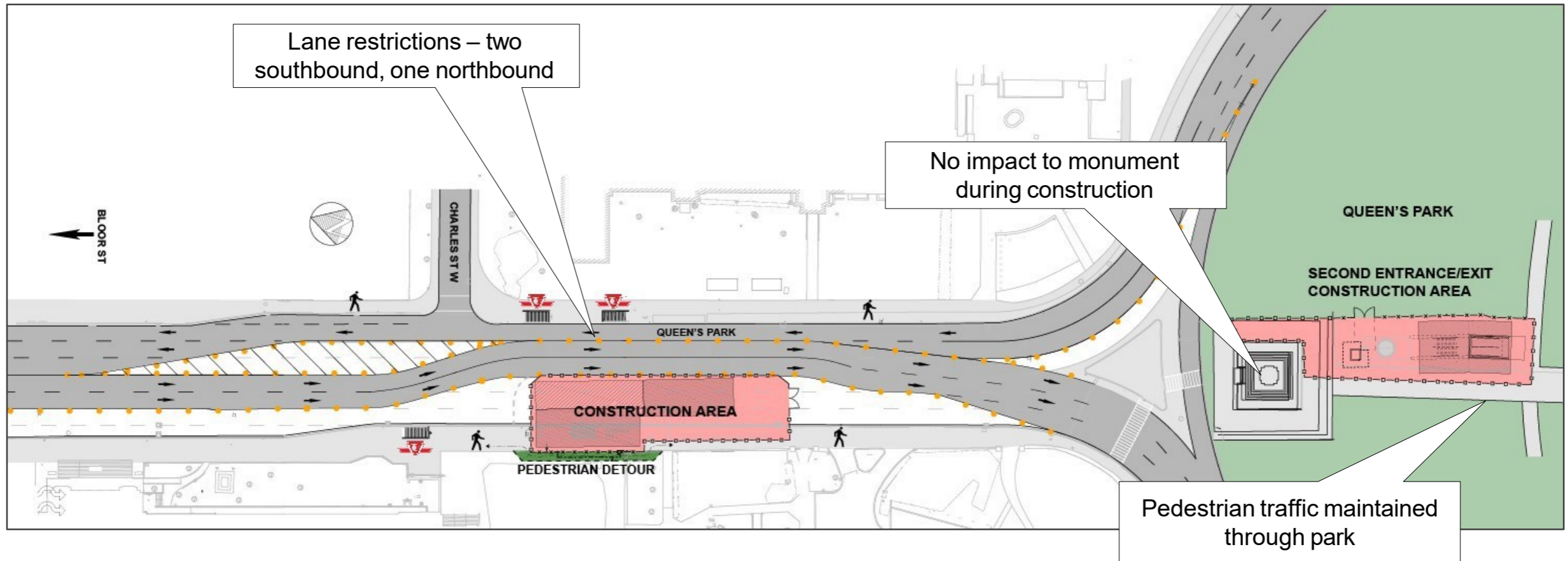
- In 2022, the TTC is scheduled to begin Easier Access construction at the following stations:
 - **Museum**, Spadina, Christie, King, Lawrence, High Park, Old Mill, and Warden.

| Construction traffic staging on Queen's Park (street)

- Lane restrictions will be in effect south of Bloor Street
- Minimum one traffic lane in each direction maintained at all times
- Cycling detour will be in effect – see slide 22

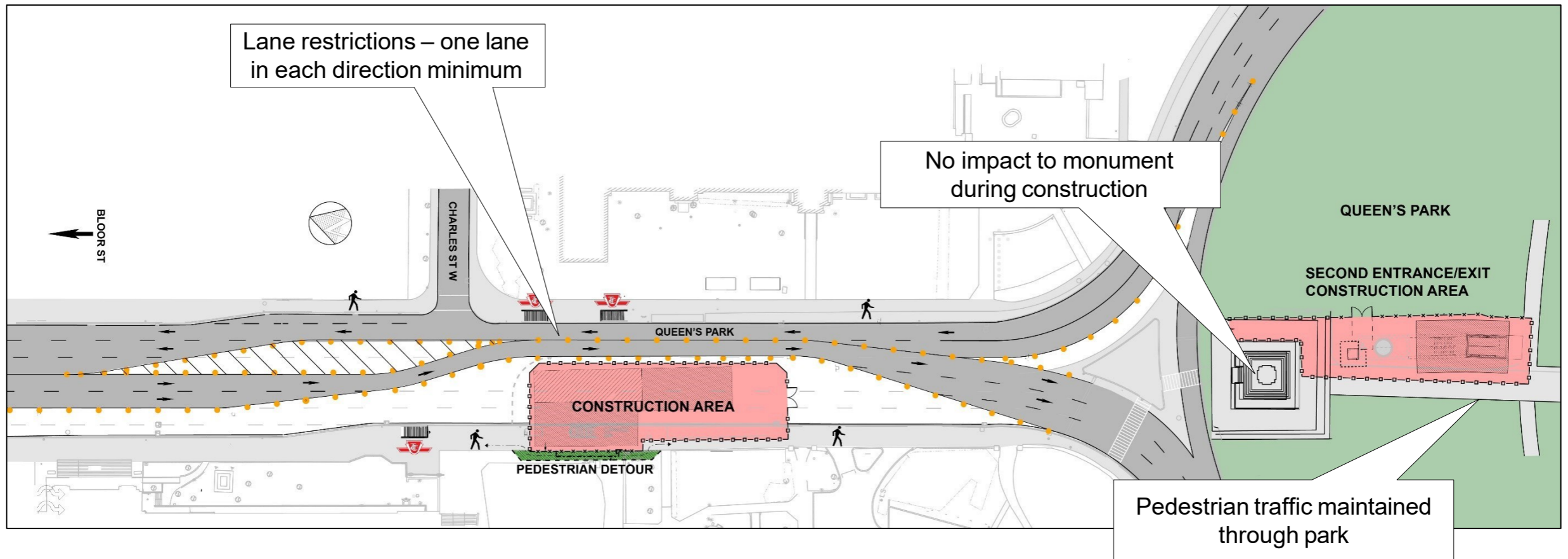
Phase 1A – July 2022 to December 2022*

- Easier Access and Second Entrance/Exit construction begins



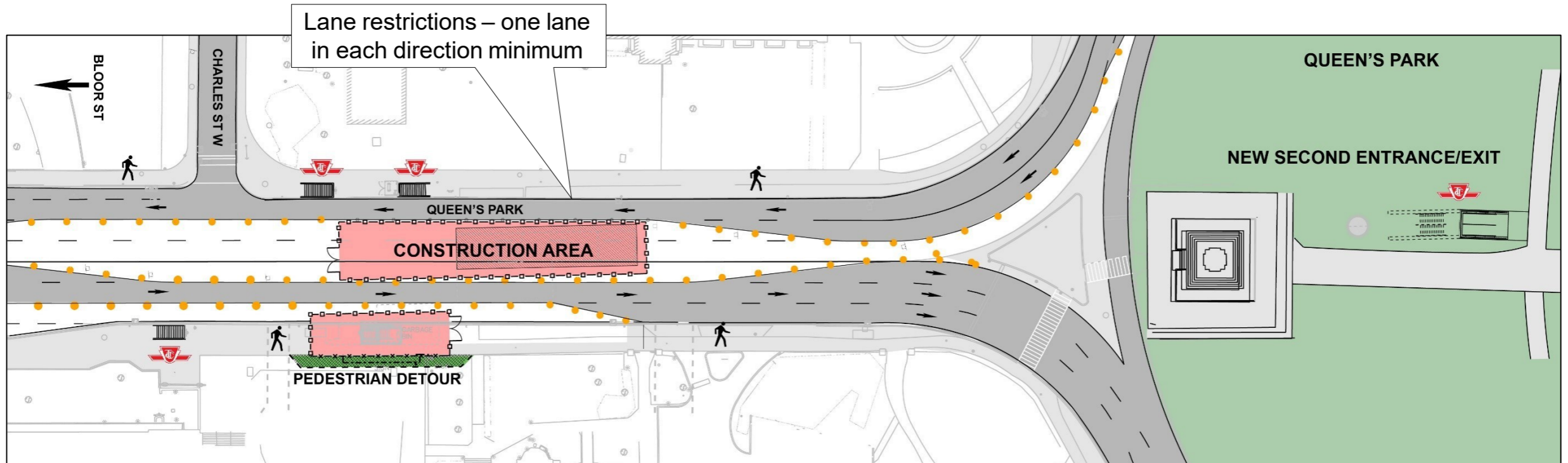
Phase 1B – December 2022 to Q2/Q3 2023*

- Easier Access and Second Entrance/Exit construction



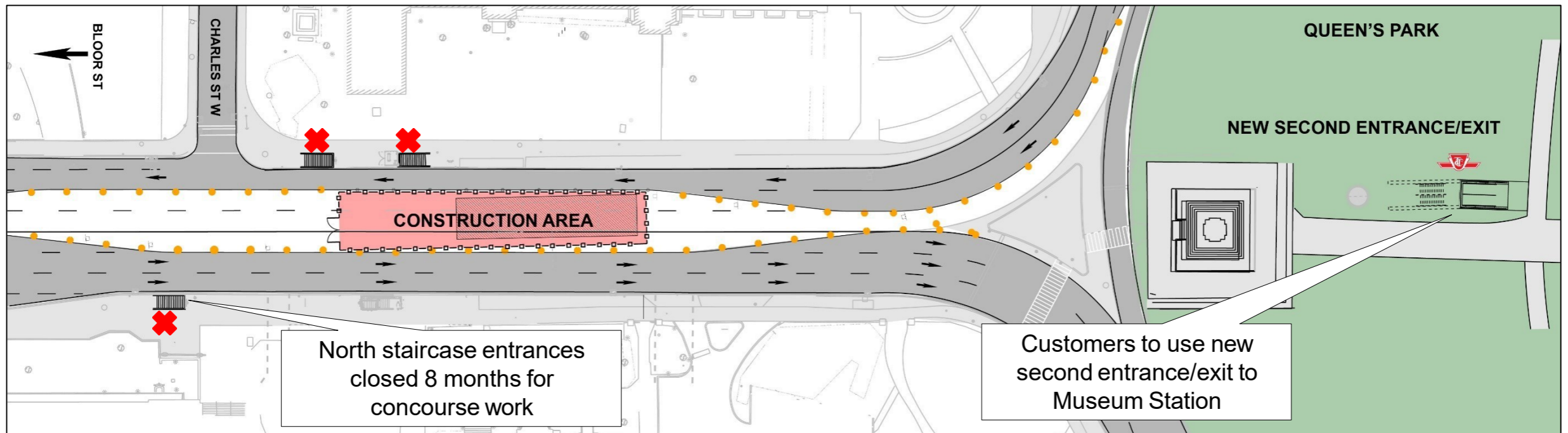
Phase 2 – Q3 2023 to Q4 2023*

- New second entrance/exit in Queen's Park completed by Phase 2



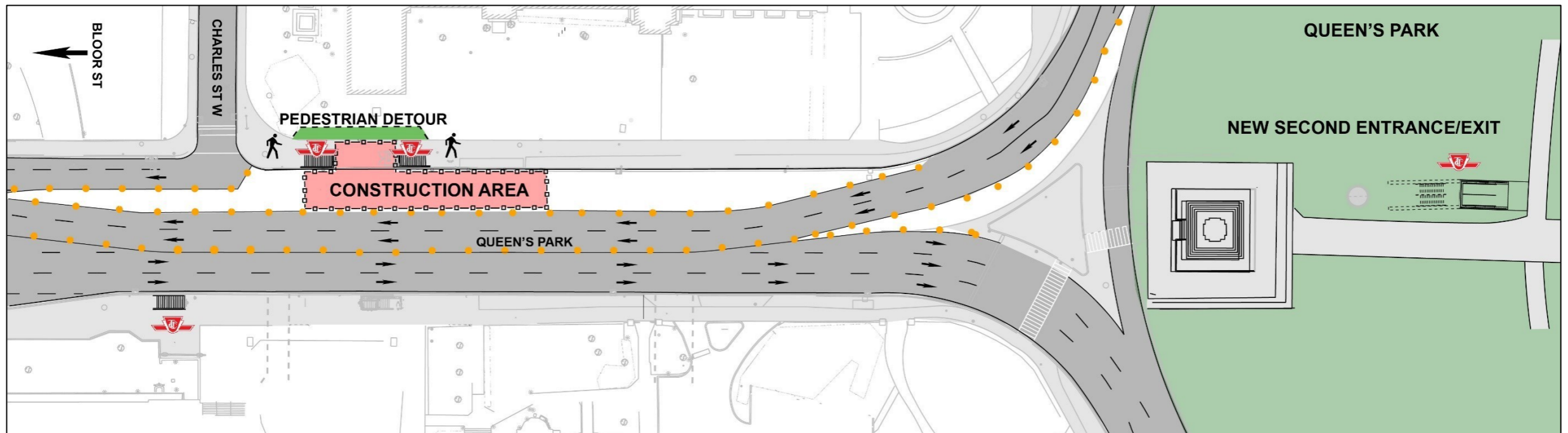
Phase 3 – Q4 2023 to Q2 2024*

- North entrances to Museum Station will be closed in Phase 3 for approx. 8 months
- Customers to use the new second entrance/exit in Queen's Park Circle during this time



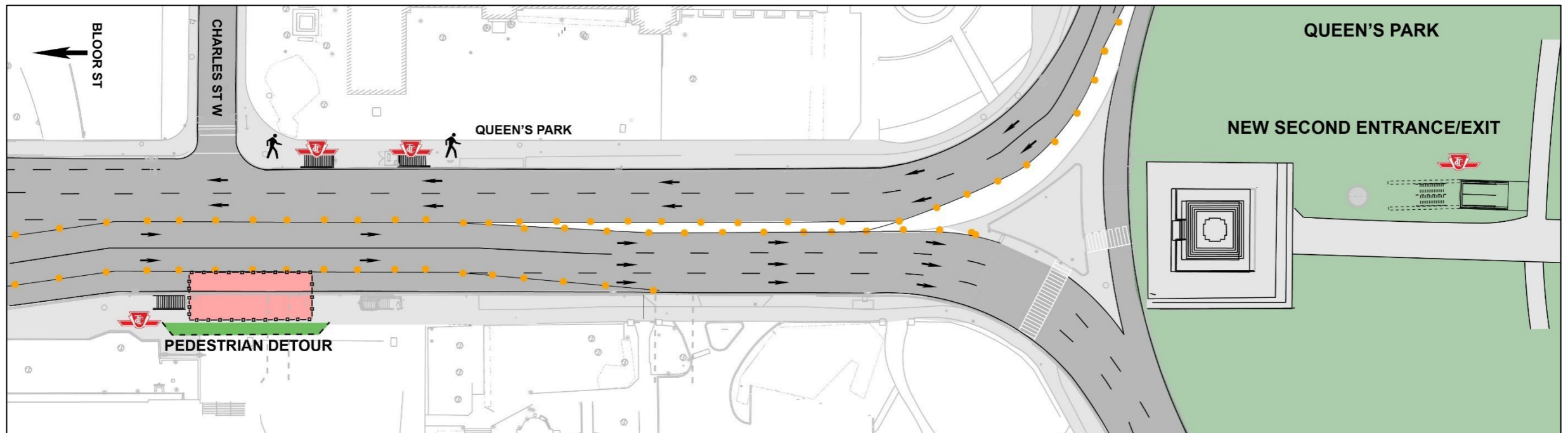
Phase 4 – Q1 2024 to Q3 2024*

- All entrances open to TTC customers
- Rehabilitation and waterproofing work at north entrance of Museum Station

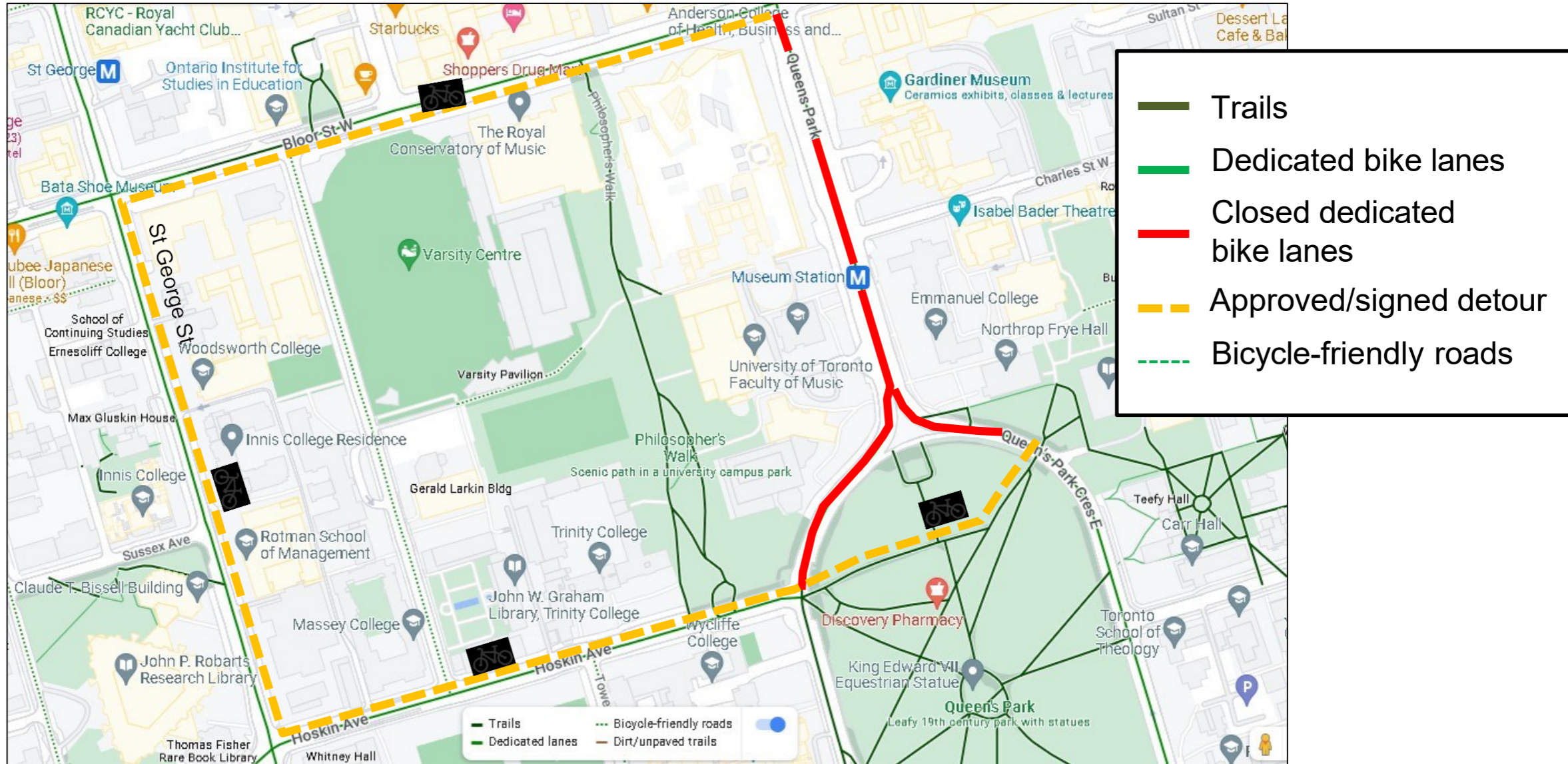


Phase 5 – Q1 2024 to Q3 2024*

- All entrances open to TTC customers
- Rehabilitation and waterproofing work at north entrance of Museum Station



Cycling detour during construction on Queen's Park



Construction Details and Transit Information:

- Major construction activities include shoring and excavation of elevator shafts – phased lane closures required
- Work will typically take place Monday to Friday between 7 a.m. and 7 p.m. Some work on weekends between 9 a.m. and 7 p.m. may be required. For safety, overnight work may be required.
- Efforts will be made to keep disruption associated with noise and dust to a minimum
- Access to subway service will be maintained throughout construction.



| Questions or comments?

Connect with the community liaison for this project for any questions or comments, or to be added to the project mailing list:

Gurjeet Kaur, Senior Community Liaison Officer, 437 551 4407,
gurjeet.kaur@ttc.ca

Museum Station elevator construction will start in July 2022.

The station is scheduled to be accessible by end of 2024.



