



Warden Station Easier Access and Redevelopment Project

Community Update

July 2023



Status of Easier Access Phase III Program

- The Easier Access Phase III program will include new elevators, accessible doors, updated signage and wayfinding at all subway stations.
- 56 stations are now accessible, 16 stations remaining to be made accessible. 15 stations are under construction:
 - Donlands, College, Greenwood, Castle Frank, Christie, Summerhill, Spadina, Lawrence, King, High Park, Rosedale, Glencairn, Museum, Warden, Islington.
- Construction of the Easier Access Phase III scope for Warden Station began in Q2 2022. Construction of the bus terminal redevelopment scope and associated works will begin in Q3 2023.
- Staff will present an update to the current Easier Access Phase III program schedule at the September 26th, 2023 Board meeting, noting the acceleration efforts both planned and currently underway, including progress made.

Background – Warden Station

- Bloor-Danforth line (Line 2) opened in February 1966, running between Keele Station and Woodbine Station.
- Line 2 extended easterly to Warden Station (westerly in Etobicoke to Islington Station) – opened in May 1968.
- A major hub with bus connections to nine (9) TTC bus routes.
- Official municipal address for Warden Station – 701 Warden Avenue. The Station is situated on a parcel of land bounded by:
 - Warden Avenue to the west;
 - Elevated TTC subway track level/corridor to the east;
 - St. Clair Avenue East to the north; and
 - TTC commuter parking lot to the south

Warden Station – Easy Access and Redevelopment Project

- Warden Station is a combined Easier Access Phase III and Bus Terminal Redevelopment project for delivery under three construction contracts:
 - Switchboard Upgrade (**complete**):
 - Include power upgrades needed for two new elevators within the Station.
 - Easier Access Phase III – PPUDO and Platform Elevators (**in-progress**):
 - Two elevators will connect customers between the Passenger Pick Up/Drop Off (PPUDO) area, concourse level and subway platform at the station.
 - Selective repairs to finishes and wayfinding tiles throughout the Station.
 - Warden Station Redevelopment (**tender stage – in progress**):
 - Temporary accessible Bus Platform and shelters.
 - New Bus Terminal and Driveway providing entrance/exit on Warden Avenue
 - Construction of a new Passenger Pick-Up Drop-Off
 - Improve streetscape in collaboration with the City of Toronto and CreateTO by integrating urban design elements and Public Art.

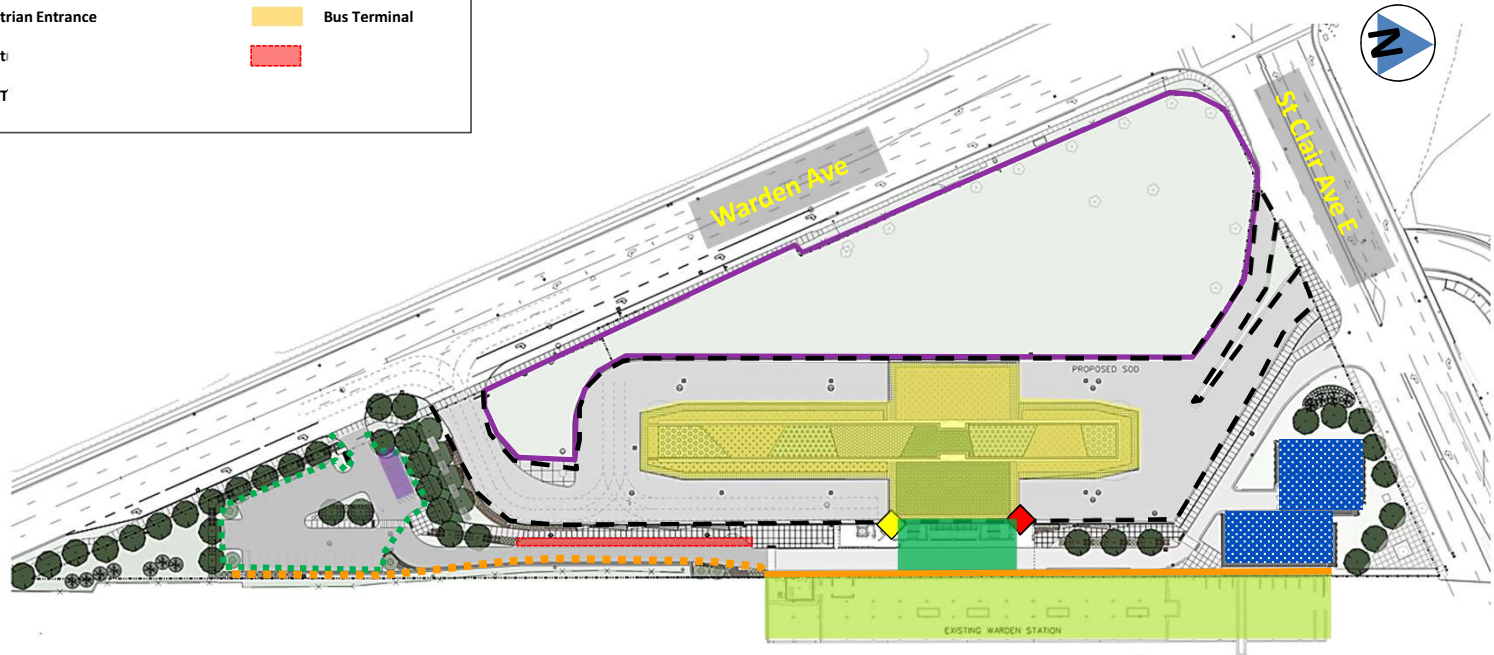


Overview of New Bus Terminal

- New two-level building structure comprising of:
 - Street-level bus platform configuration with 12 bays:
 - Parking/storage space for six (6) articulated and six (6) regular transit buses for loading and unloading transit users.
 - Three (3) bays designated for Wheel-Trans stop.
 - Aboveground Bus Terminal Concourse Level:
 - Public Areas: six (6) retail spaces and public, universal washrooms.
 - Provisions for connection to future CreateTO residential development adjacent to existing Station.
- For access from/to bus terminal street-level and concourse level as reviewed and accepted by ACAT:
 - Two (2) elevators
 - Two (2) escalators
 - Common staircases
- Green roof embedded into new bus terminal design.

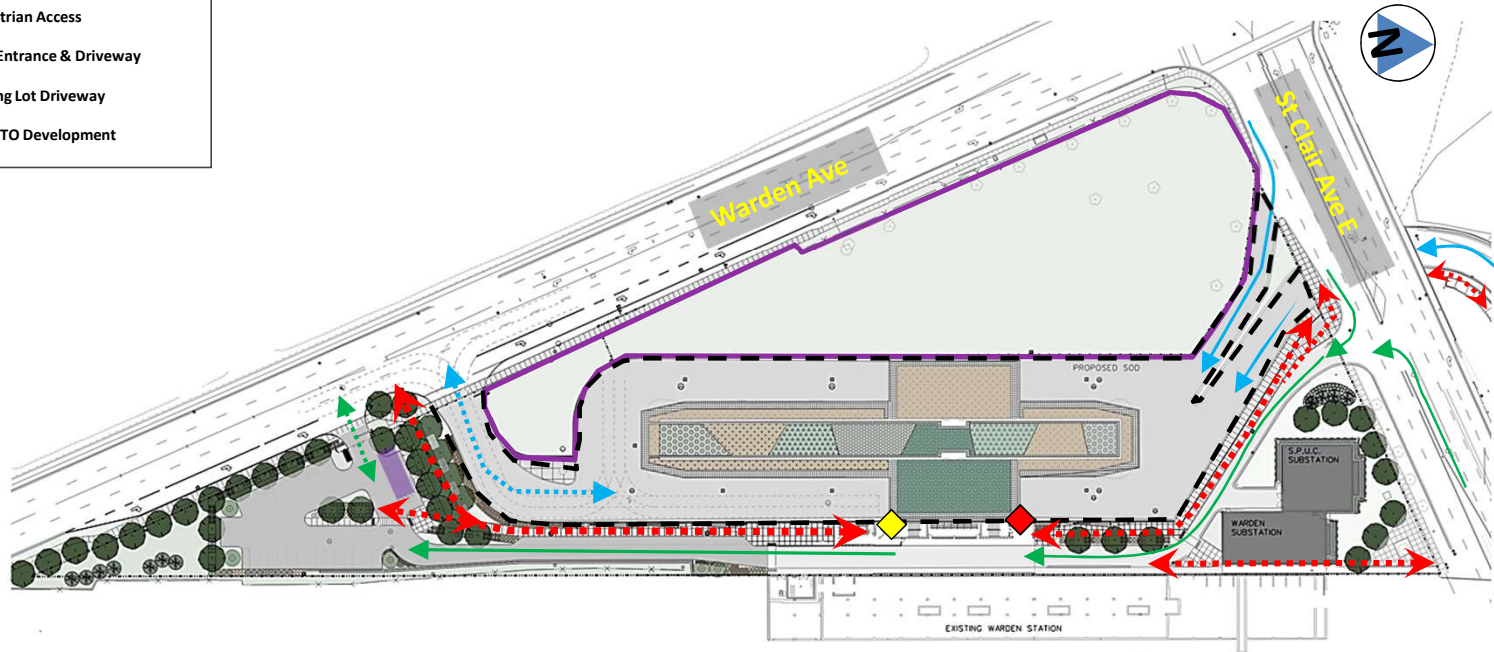
Warden Station: Future Site and Surroundings

LEGEND			
	Staff Parking Area		PPUDO Parking Lot
	Substations		Subway Concourse
	South O/H Track Retaining Wall		Subway Platform
	Rehabilitated O/H Track Retaining Wall		Bus Terminal Site
	Station Pedestrian Entrance		Bus Terminal
	Station Pedestrian		
	Future CreateT		

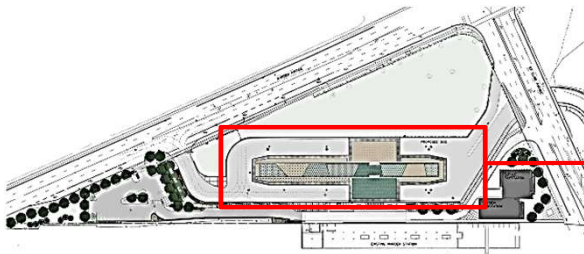
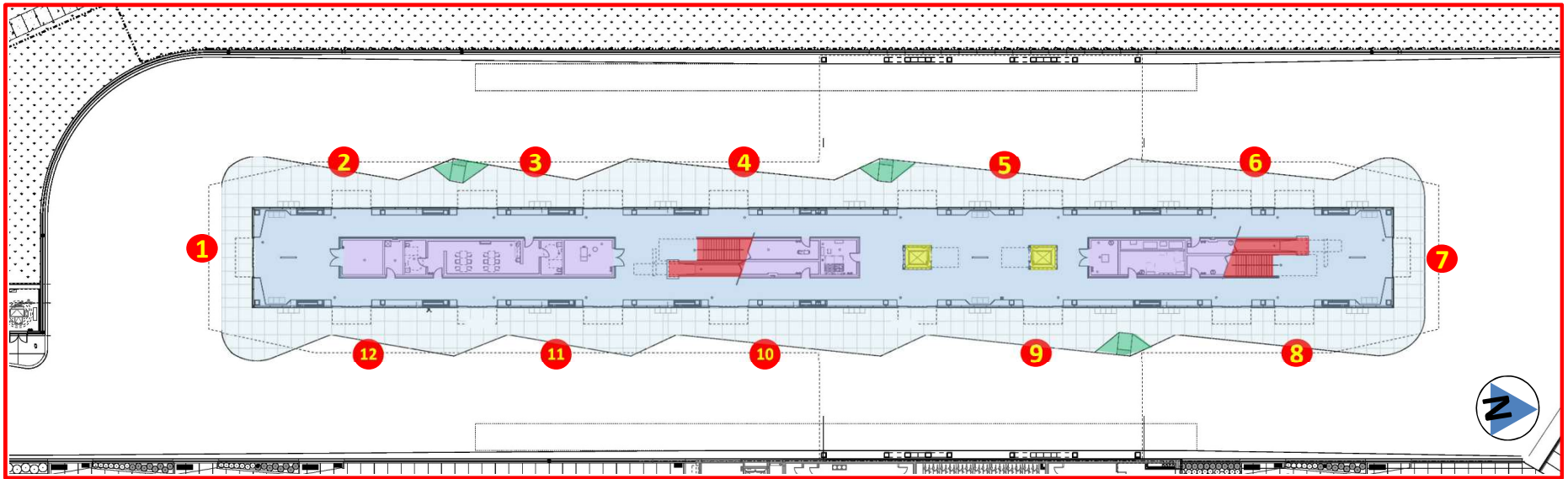


Warden Station: Future Site Access & Circulation

LEGEND	
	Bus Terminal Site Entrance Ramp
	Bus Terminal Site Driveway (Warden Ave)
	Station Pedestrian Entrance
	Station Pedestrian Entrance (E45-5)
	Station Pedestrian Access
	PPUDO Area Entrance & Driveway
	PPUDO Parking Lot Driveway
	Future CreateTO Development



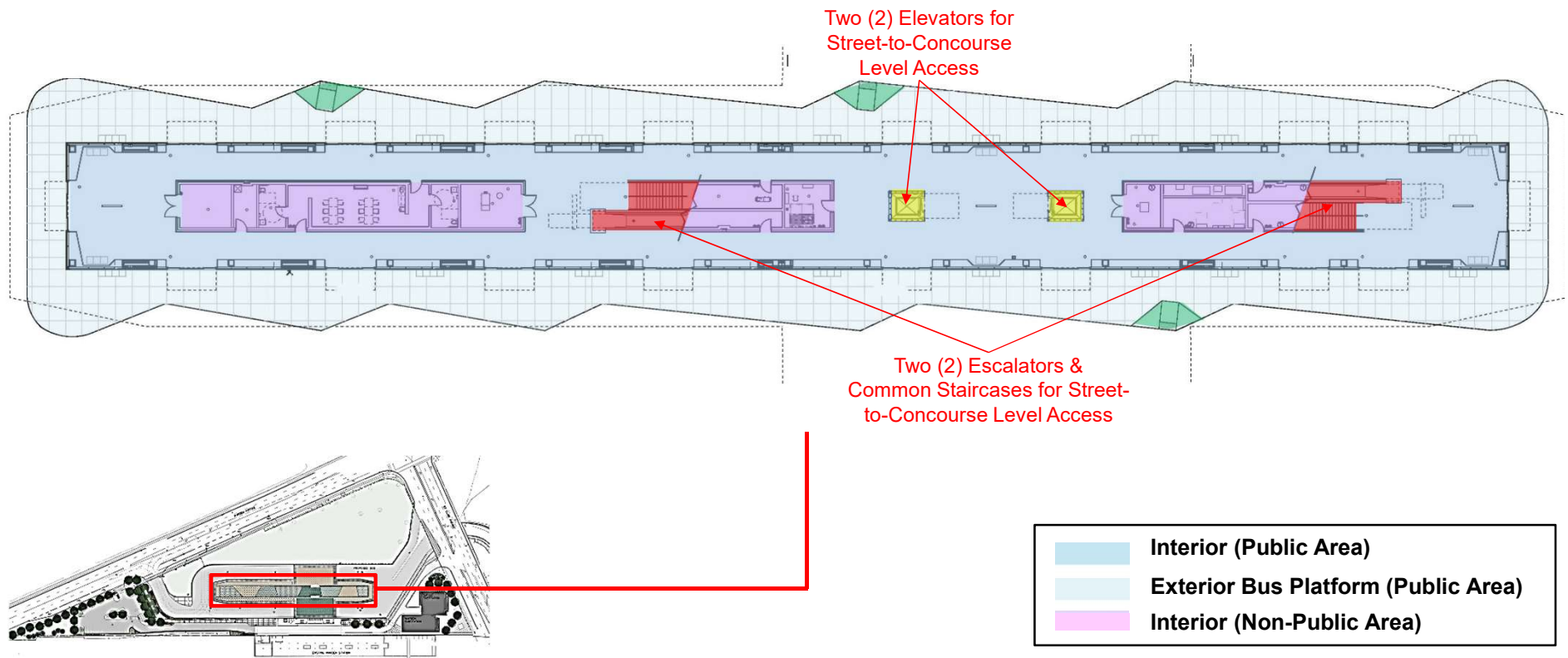
New Bus Terminal – Street-Level (Exterior)



	Interior (Public Area)
	Exterior Bus Platform (Public Area)
	Interior (Non-Public Area)
	Curb cut for Wheel-Trans
	Bus Platform Bay



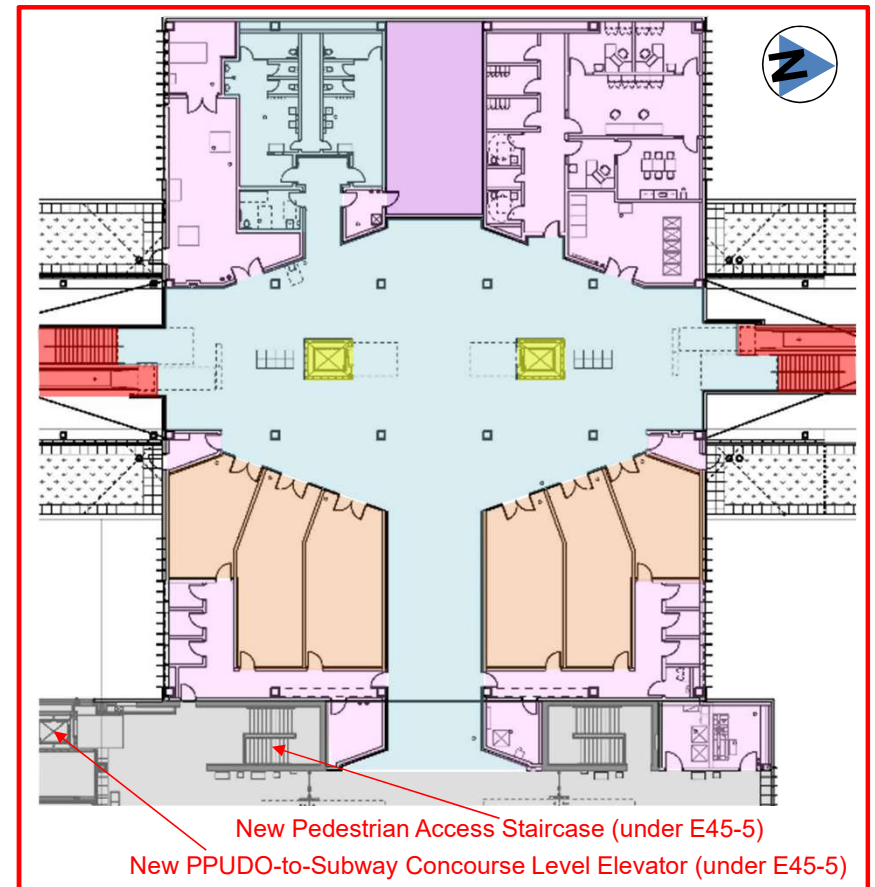
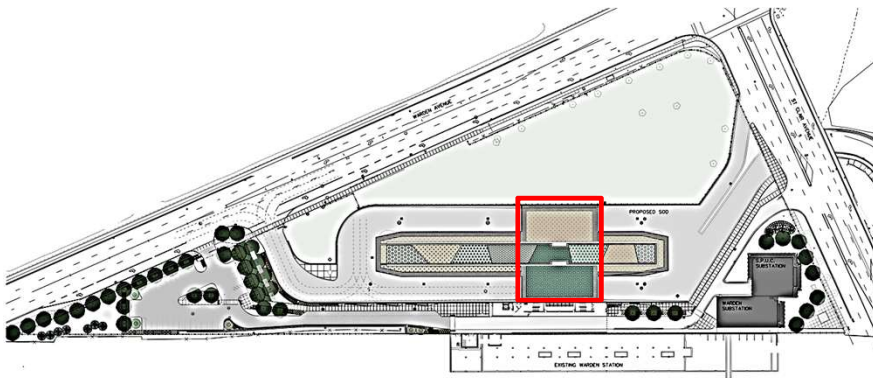
New Bus Terminal – Street-Level (Interior)



New Bus Terminal – Concourse Level

	Interior Public Area
	Non-Public Area
	Retail Spaces
	Future CreateTO Connection
	Elevators
	Escalators & Staircases
	Existing Station Concourse

All areas in new Bus Terminal Concourse Level are paid areas.

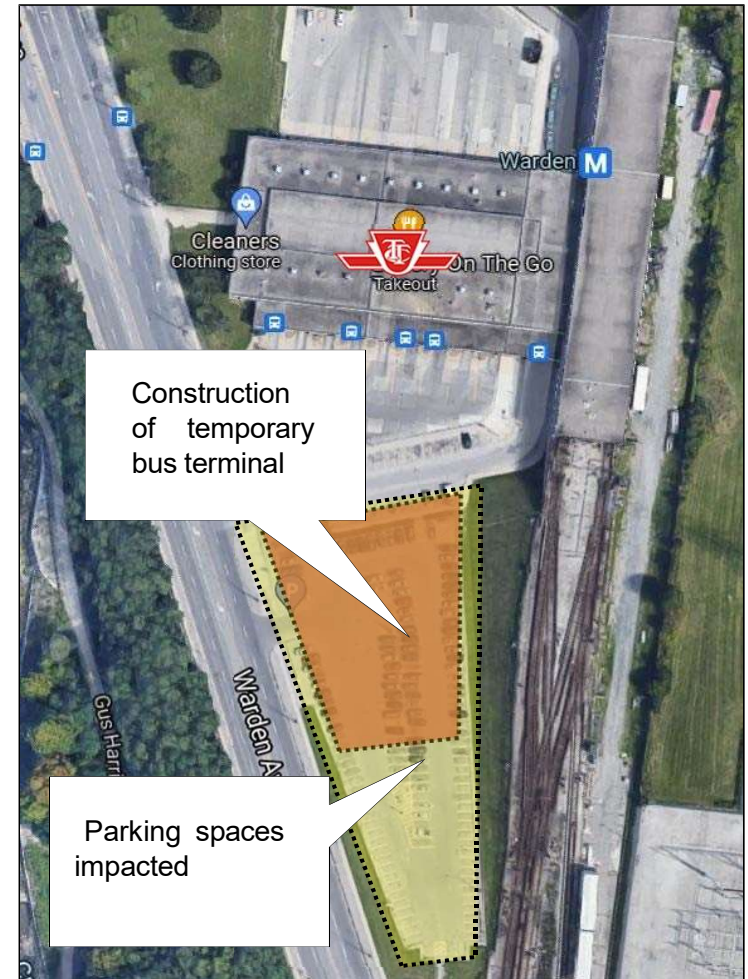


Future Station and Bus Terminal Site – Aerial Rendering

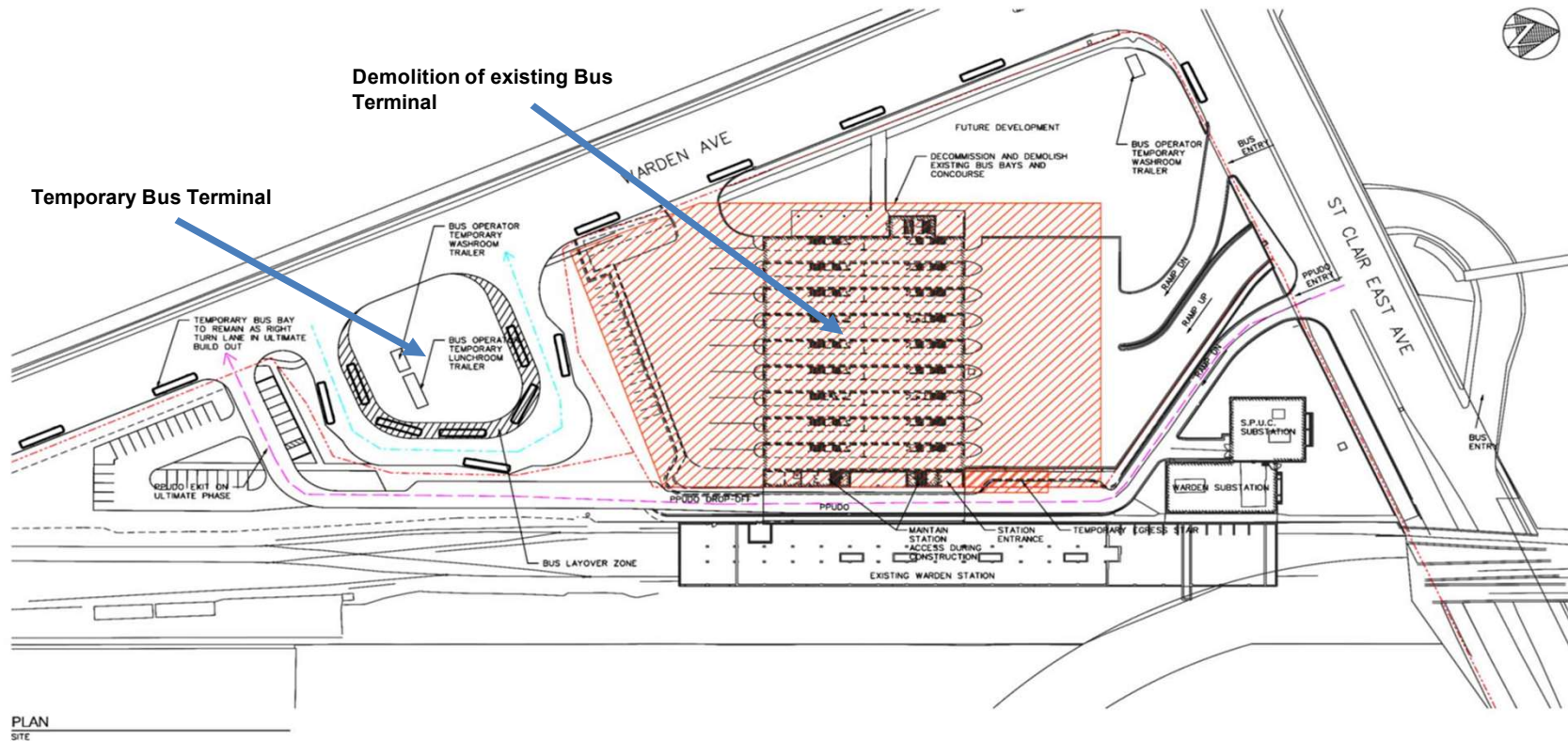


Temporary Bus Platform

- Existing South Commuter Lot will be replaced with a new Passenger Pick-Up Drop-Off Parking Lot and a temporary, accessible bus platform, commencing in Q1 2024.
- Construction: Q1 2024 to mid-2025
 - Parking spaces impacted: 151
 - Temporary parking spaces remaining: 32
- Temporary bus platform scheduled to be in-service in mid-2025



Warden Station – Temporary Bus Terminal



Warden Station – Redevelopment Rendering

Exterior view of new bus terminal and driveway on Warden Avenue looking north



Note: Finishes shown are for presentation purpose and subject to change

Warden Station – Redevelopment Rendering

Exterior view of new PPUDO area and bus terminal looking north



Note: Finishes shown are for presentation purpose and subject to change

Warden Station – Redevelopment Rendering

PPUDO entrance driveway and new bus terminal looking southeast



Note: Finishes shown are for presentation purpose and subject to change

Warden Station – Redevelopment Rendering

Interior view of new Bus Terminal concourse



Note: Finishes shown are for presentation purpose and subject to change

Planned Project Communication in 2023

- **September 2023** – Project notices mailed via Canada Post
- **September 2023** – TTC social media campaign to notify work beginning
- **September/October 2023** – Project information and signage throughout Station and South Commuter Lot providing notice of upcoming temporary closure
- **October 2023** – Windshield flyers for Commuter Lots
- Dedicated Community Liaison throughout project

Project Schedule – Warden Station Redevelopment

- **Q3 2023** – Contract awarded
- **Q3/Q4 2023** – Community mail-out and opportunity to coordinate a community meeting alongside local Council office. Construction begins to mobilize.
- **Q4 2024** – Elevators in service between Passenger Pick-Up Drop-Off and subway platform level
- **Mid-2025** – New **temporary** Street-Level Bus Island in-service at Warden Station.
- **Q4 2027** – New permanent accessible Bus Terminal in-service.



Contact

- Regular updates to Commissioners and local Ward Councillor
- Email updates provided to all local subscribers

Questions:

Arjun Sahota

Community and Stakeholder Relations

Arjun.Sahota@ttc.ca

(647) 706-6487

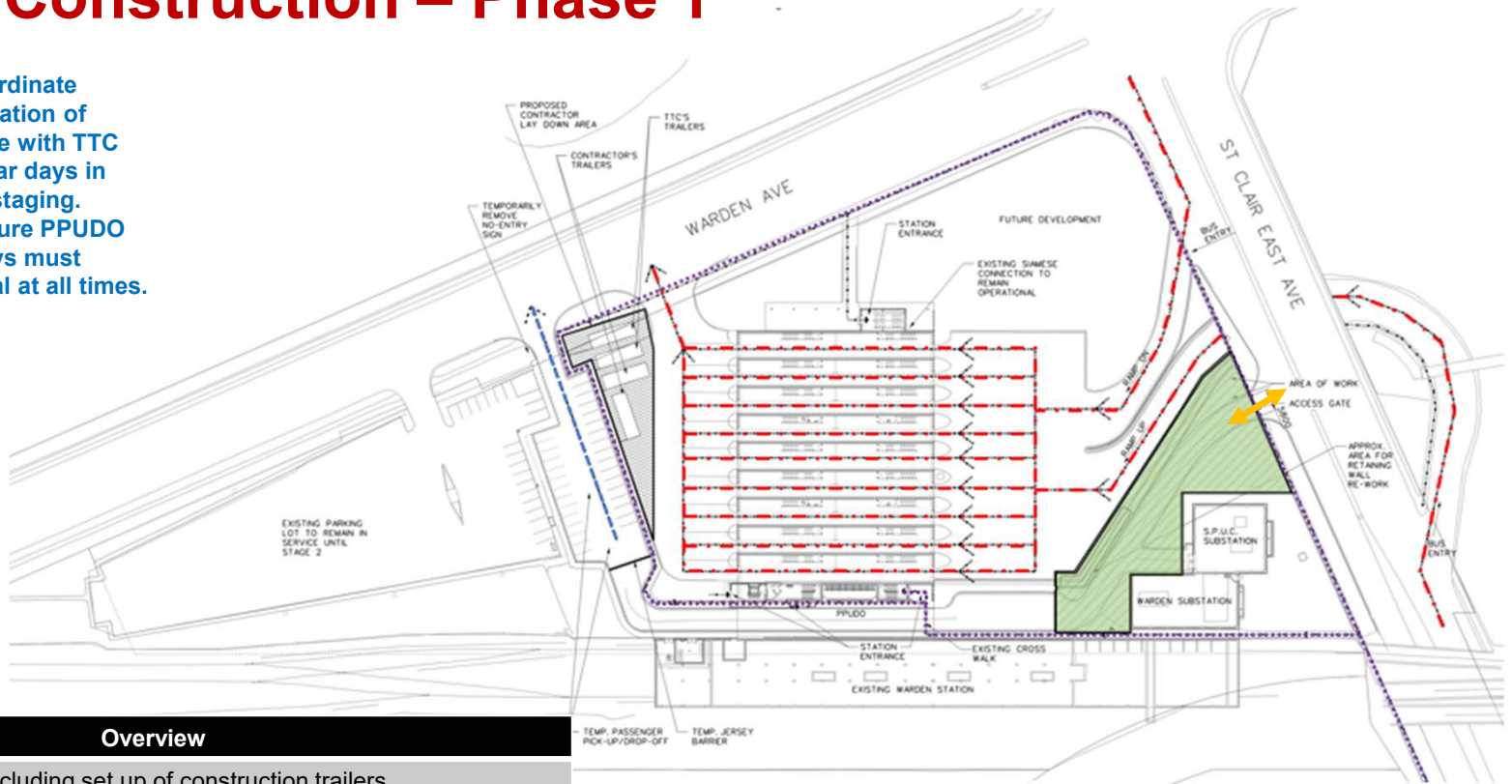




E4-13: Construction – Phase 1

NOTE:

- (1) Contractor to coordinate supply and installation of temporary signage with TTC at least 30 calendar days in advance of each staging.
- (2) Contractor to ensure PPUDO area and driveways must remain operational at all times.



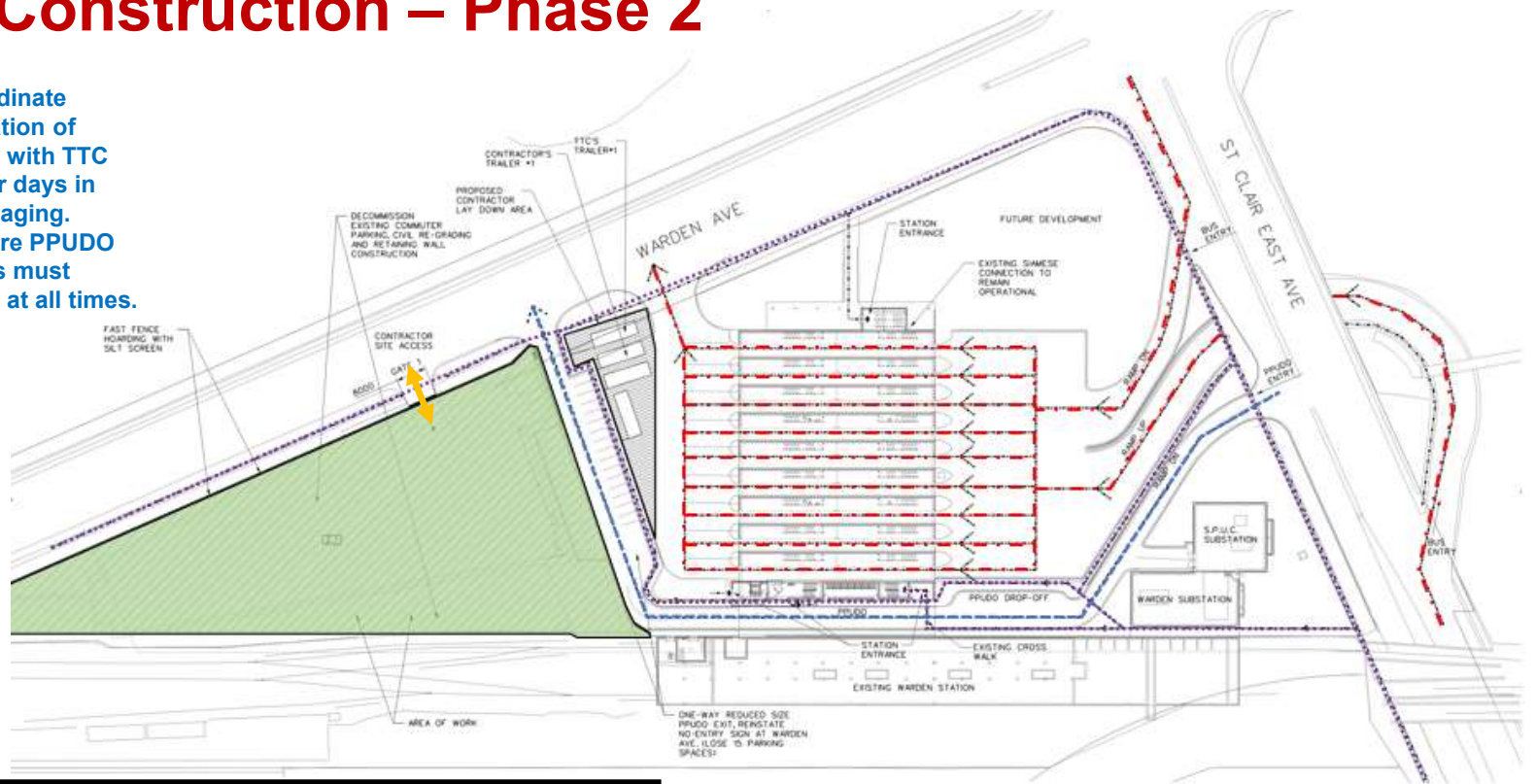
- Overview**
- Site mobilization, including set up of construction trailers.
 - Existing PPUDO entrance ramp:
 - Install temporary perimeter hoarding and fencing.
 - Remove existing curbs, sidewalks, and guardrail.
 - Widen ramp for Emergency Vehicle Station access route.



E4-13: Construction – Phase 2

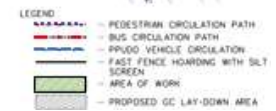
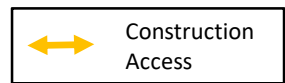
NOTE:

- (1) Contractor to coordinate supply and installation of temporary signage with TTC at least 30 calendar days in advance of each staging.
- (2) Contractor to ensure PPUDO area and driveways must remain operational at all times.



Overview

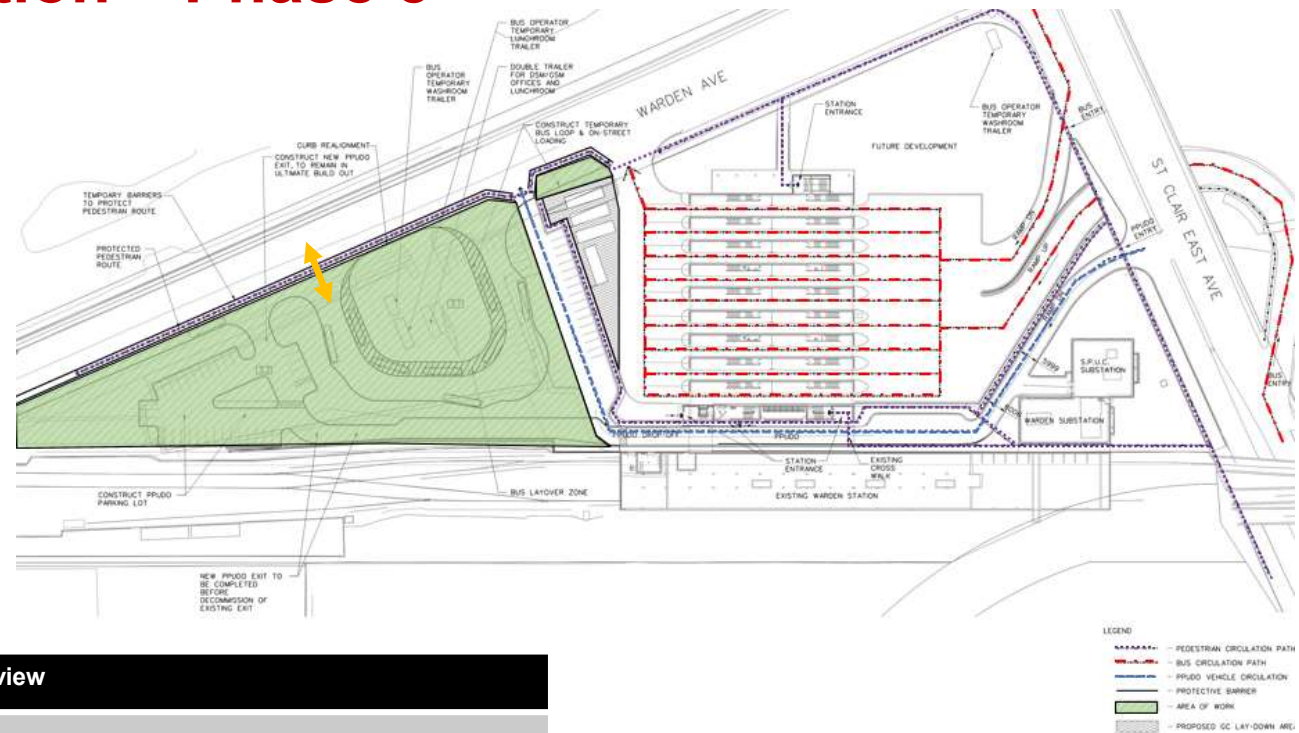
- Existing TTC south commuter parking lot site:
 - Install temporary perimeter hoarding and fencing.
 - Demolish site and associated curbs, pavement, lighting, and utilities.



E4-13: Construction – Phase 3

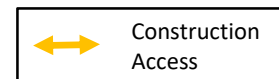
NOTE:

- (1) Contractor to coordinate supply and installation of temporary signage with TTC at least 30 calendar days in advance of each staging.
- (2) Contractor to ensure PPUDO area and driveways must remain operational at all times.



Overview

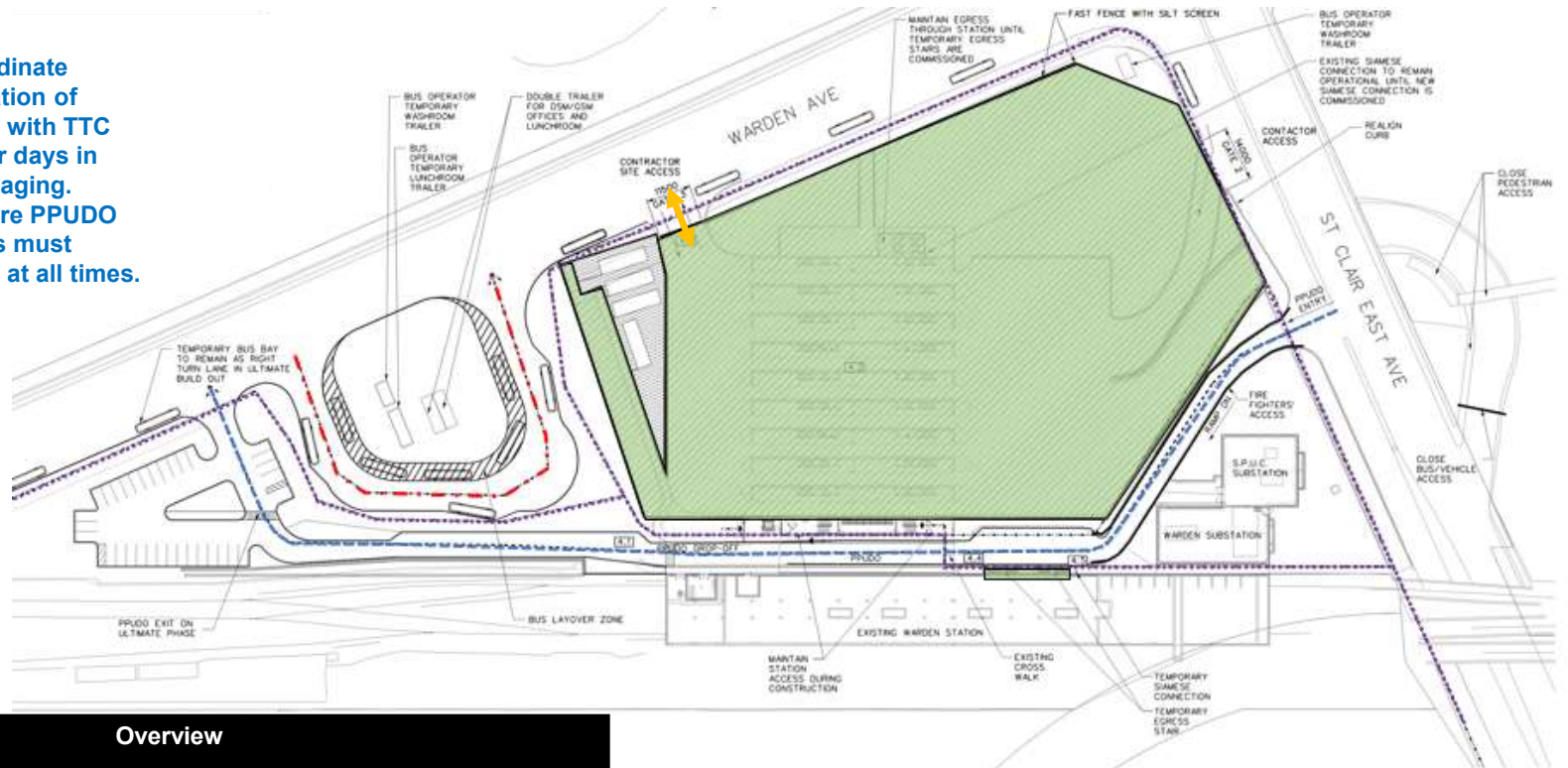
- Existing TTC south commuter parking lot site:
 - Remove, relocate existing and install new utilities.
 - Construct portion of new site dewatering system.
 - Construct temporary bus loop with temporary washrooms, lunchroom, and office trailers.
 - Construct new site dewatering pit located within temporary bus loop.
 - Construct new south retaining wall.
 - Construct new PPUDO driveway and short term parking.



E4-13: Construction – Phase 4

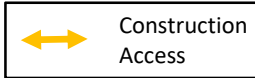
NOTE:

- (1) Contractor to coordinate supply and installation of temporary signage with TTC at least 30 calendar days in advance of each staging.
- (2) Contractor to ensure PPUDO area and driveways must remain operational at all times.



Overview

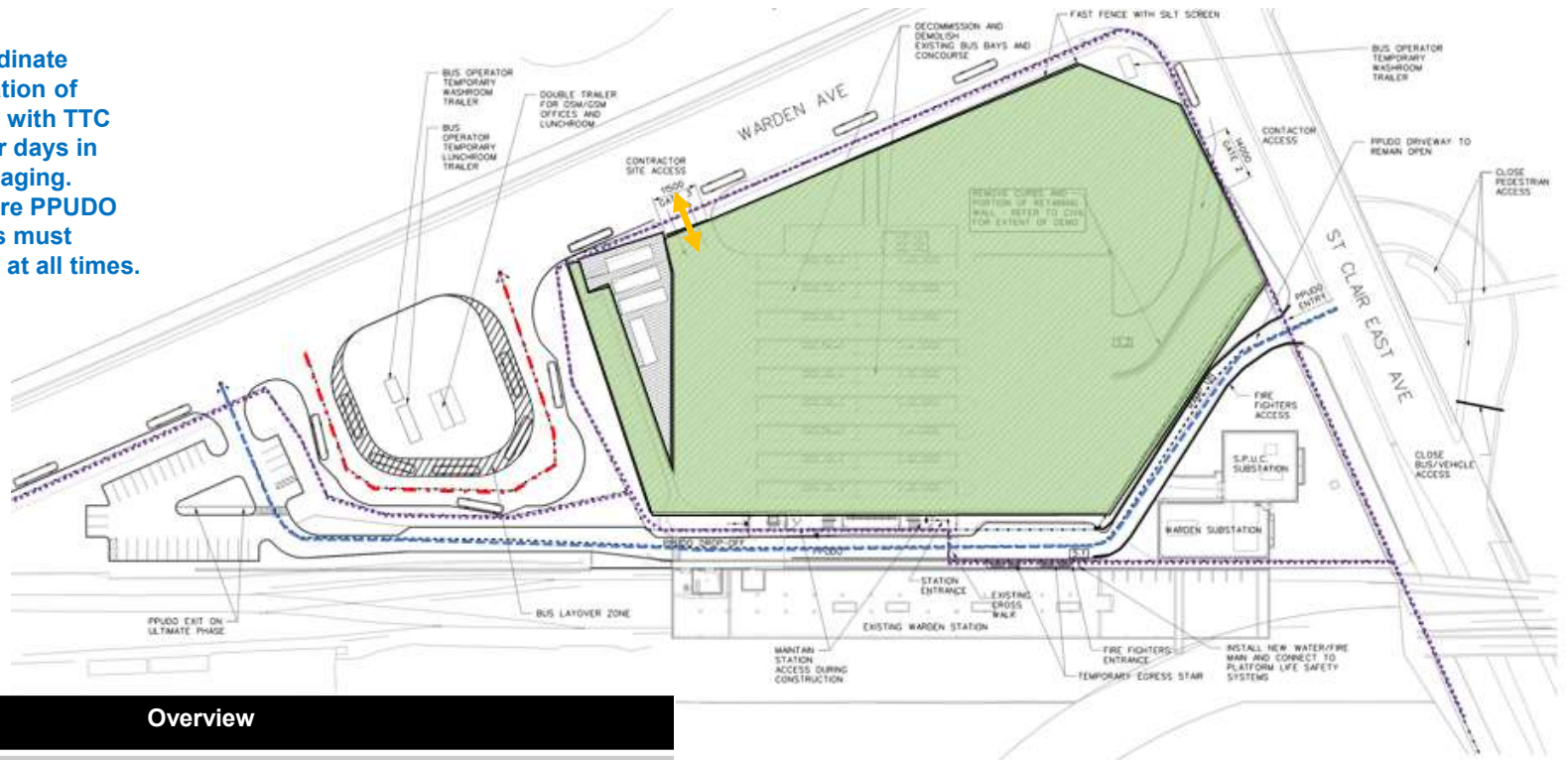
- Install temporary hoarding and fencing at existing bus terminal site.
- Construct temporary egress stair at existing Subway Concourse level.
- Construct temporary Siamese connection for City Fire Department.
- Demolish existing bus terminal.



E4-13: Construction – Phase 5

NOTE:

- (1) Contractor to coordinate supply and installation of temporary signage with TTC at least 30 calendar days in advance of each staging.
- (2) Contractor to ensure PPUDO area and driveways must remain operational at all times.



Overview

- Excavate and regrade new terminal site.
- Remove, relocate existing and install new utilities at new bus terminal site.
- Install new water services and fire connection at new bus terminal site.
- Remove curbs, roadway and portions of retaining wall at St. Clair Ave. East bus entrance ramp for regrading of entrance ramp.

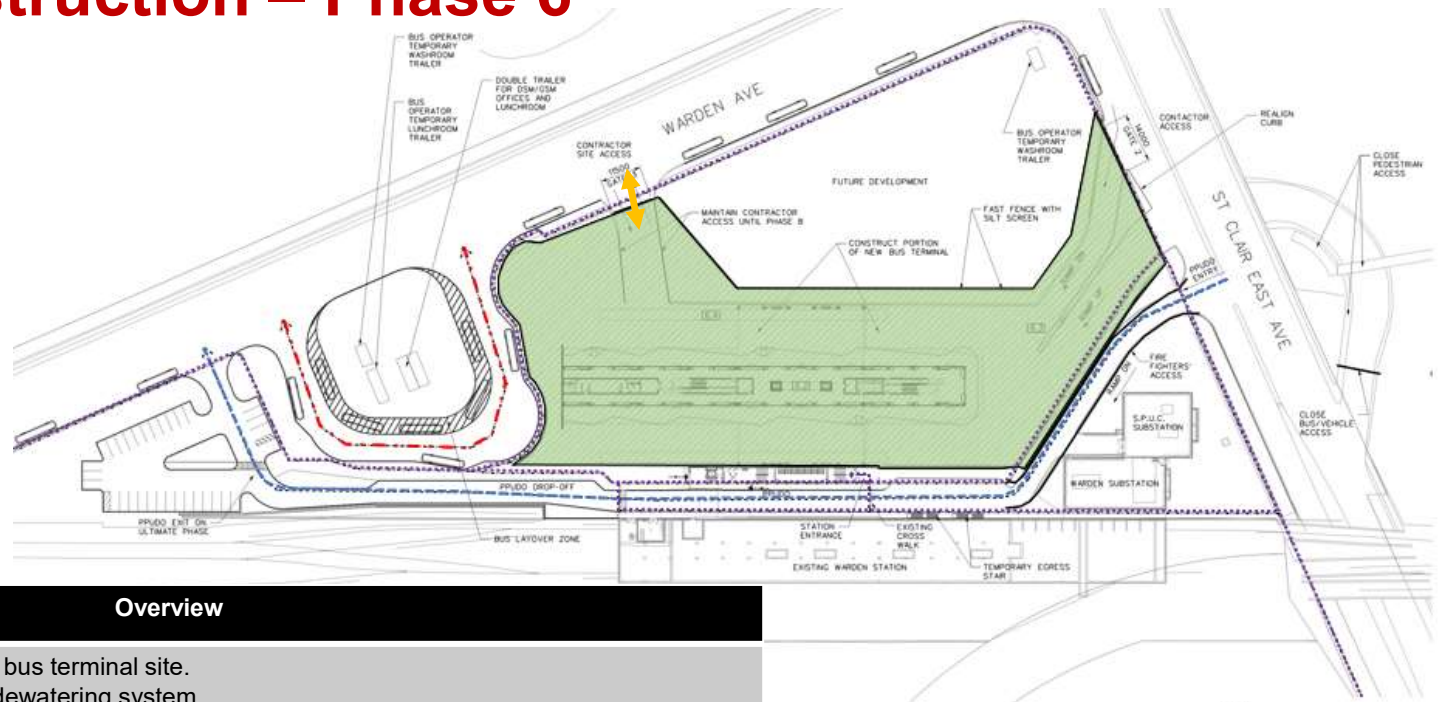
↔ Construction Access



E4-13: Construction – Phase 6

NOTE:

- (1) Contractor to coordinate supply and installation of temporary signage with TTC at least 30 calendar days in advance of each staging.
- (2) Contractor to ensure PPUDO area and driveways must remain operational at all times.



Overview

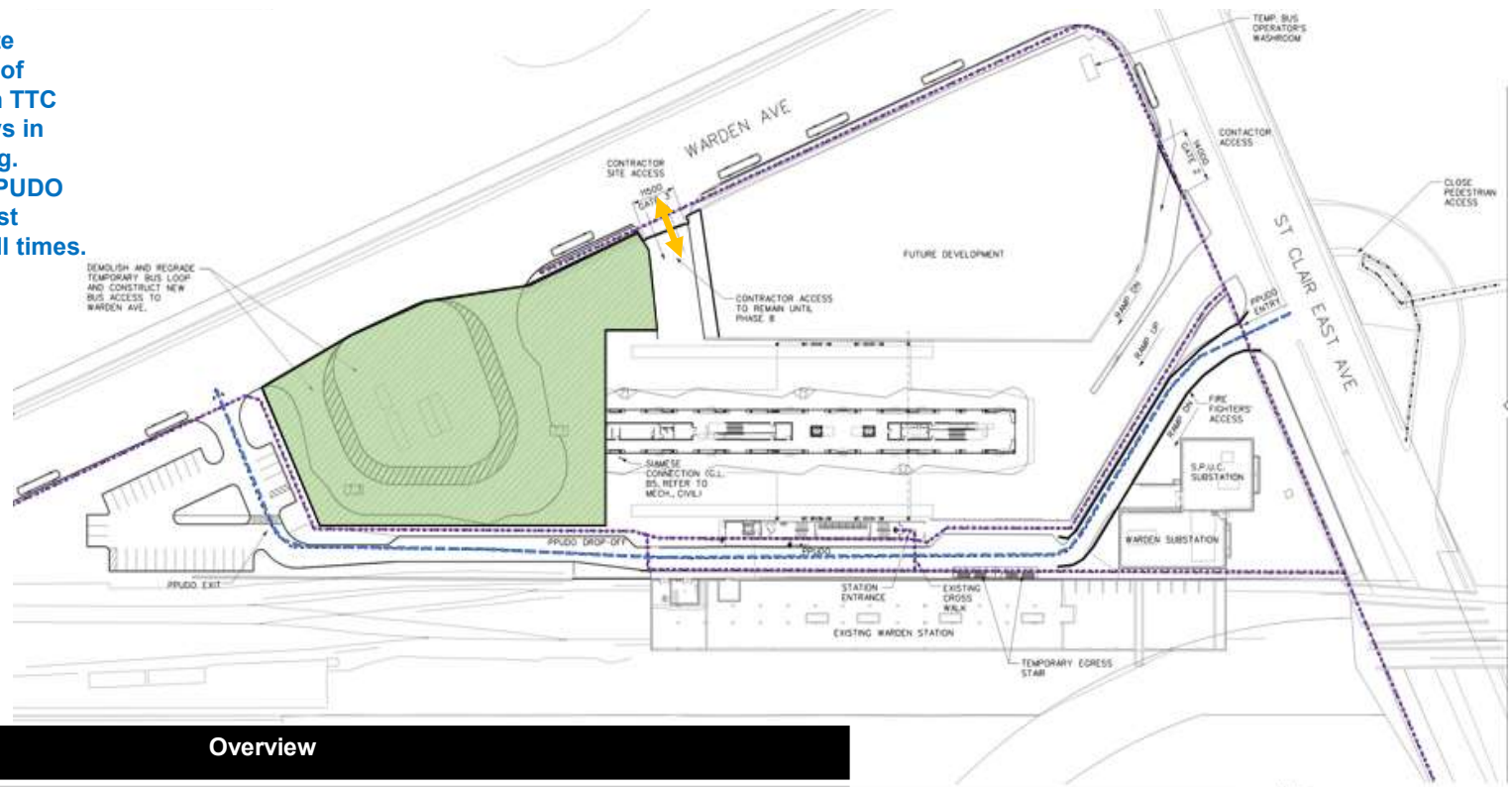
- Install utilities and lighting at new bus terminal site.
- Continue installation of new site dewatering system.
- Construct approximately 75% of new bus terminal, as indicated on the Contract Drawings.
- Reconstruct bus entry ramps from St. Clair Ave. East, including curbs, driveway, and retaining wall.
- Construct portions of new retaining wall along west side of bus terminal.
- Construct new bus terminal loop around the 75% complete bus terminal.
- Demolish temporary bus loop.
- Construct temporary construction access to Warden Ave.
- Construct final entry/exit driveway to Warden Ave. for new bus terminal.
- Commission and put in service all systems within the constructed portion of new bus terminal.



E4-13: Construction – Phase 6B & 7

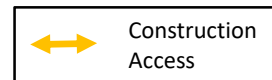
NOTE:

- (1) Contractor to coordinate supply and installation of temporary signage with TTC at least 30 calendar days in advance of each staging.
- (2) Contractor to ensure PPUDO area and driveways must remain operational at all times.



Overview

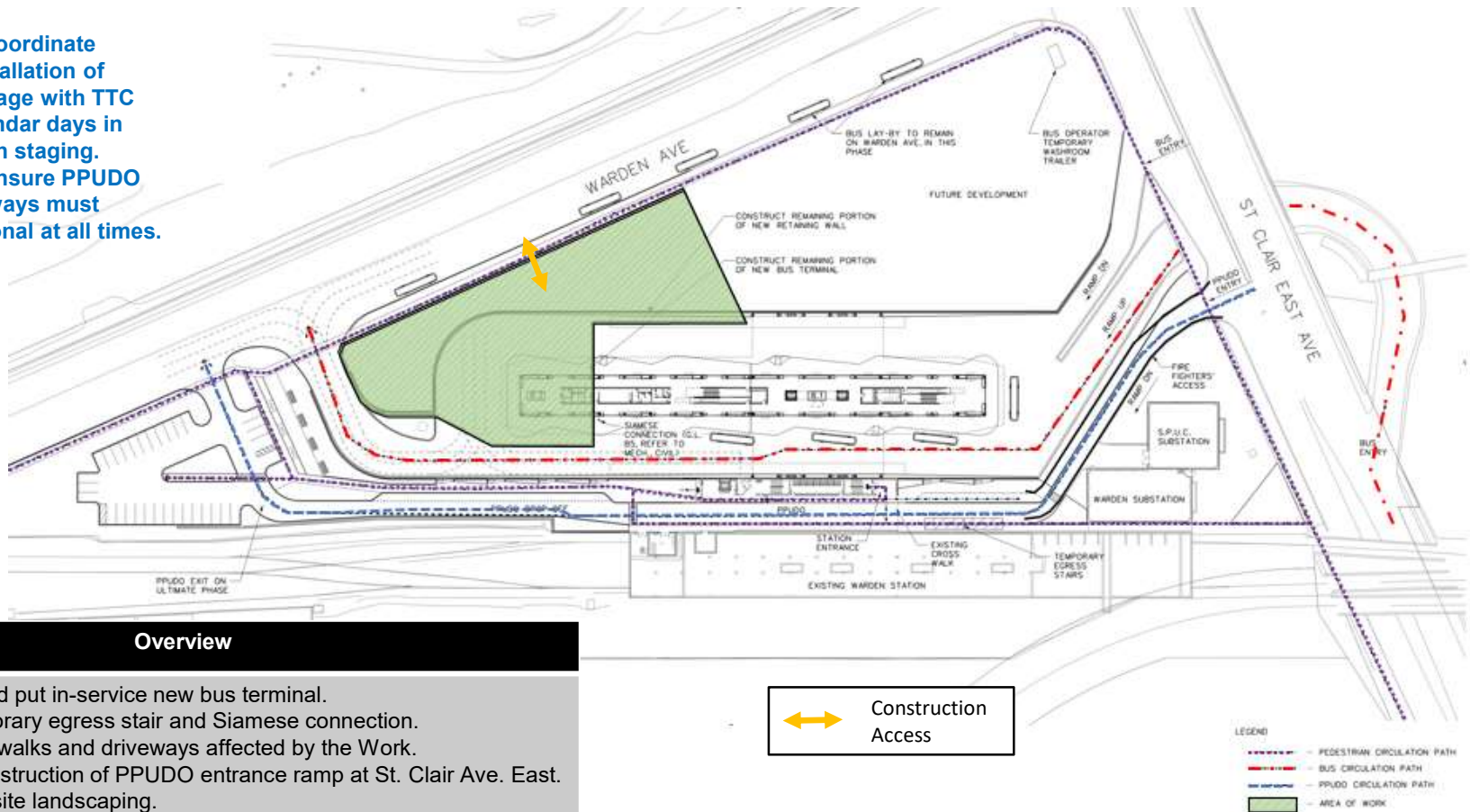
- Install hoarding and delineate area of work for the remaining portion of new bus terminal.
- Construct remaining portion of new bus terminal.
- Install site dewatering pumps and systems.



E4-13: Construction – Phase 8 & 9

NOTE:

- (1) Contractor to coordinate supply and installation of temporary signage with TTC at least 30 calendar days in advance of each staging.
- (2) Contractor to ensure PPUDO area and driveways must remain operational at all times.



Overview

- Commission and put in-service new bus terminal.
- Demolish temporary egress stair and Siamese connection.
- Restore all sidewalks and driveways affected by the Work.
- Complete reconstruction of PPUDO entrance ramp at St. Clair Ave. East.
- Complete new site landscaping.

