



Harlandale Avenue Daily road closure for ductbank construction

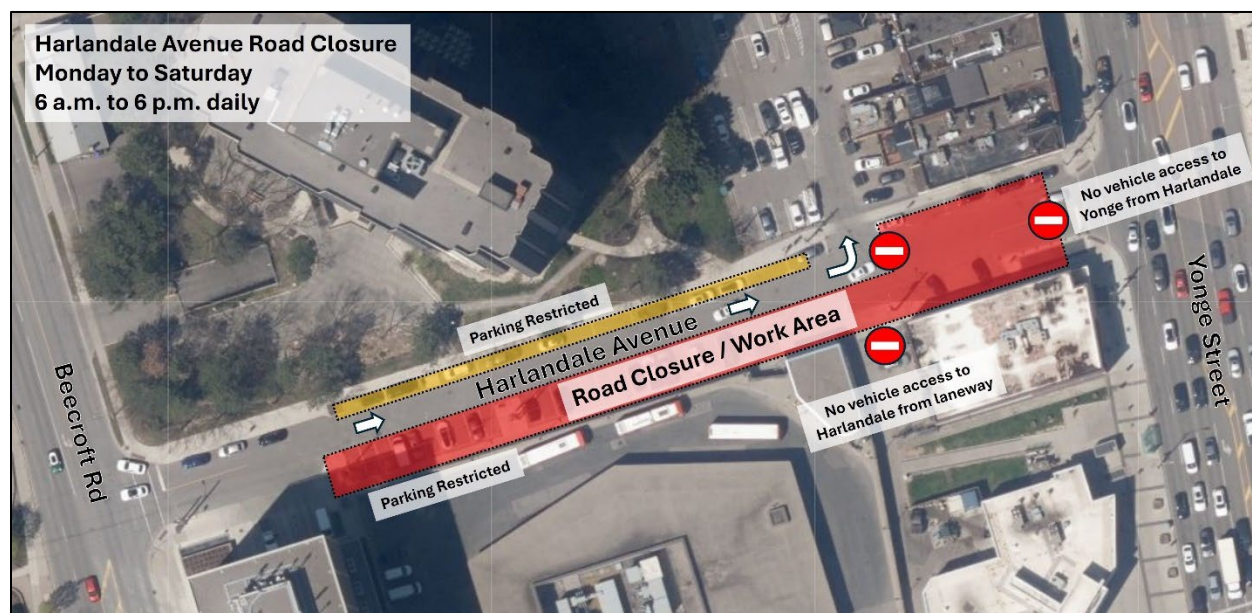
Timeline: Starting as early as Monday, June 9 for approximately 5 weeks

**Pending weather and unforeseen events. Content / timeline accurate at time of printing*

What we are doing and why

TTC is currently constructing an underground ductbank on the south side of Harlandale Avenue, west of Yonge Street, to upgrade transit infrastructure at Sheppard-Yonge Station.

To support construction, a daily road closure of Harlandale Avenue will begin as early as Monday, June 9. The road closure is expected to last 5 weeks and will be in place from 6 a.m. to 6 p.m., Monday to Saturday. **After each workday, the road will re-open to one-way eastbound traffic.**



Motorist and pedestrian impacts

- The road closure will be in place daily from 6 a.m. to 6 p.m. Monday to Saturday. **There will be no through-traffic to Yonge Street from Harlandale Avenue during these hours.**
- Harlandale Avenue will re-open to one-way eastbound traffic after each workday.
- The laneway connecting Sheppard Avenue to Harlandale Avenue will be closed to general traffic – only local traffic will be allowed. **This will be in place for the full closure duration.**
- Access to the Green P parking lot will be maintained.
- The north sidewalk will be maintained.

Work activities, hours and timeline

- Work activities will generally take place during the daytime. Work to close the road will start at 6 a.m. each day.
- Expected construction activities include excavation and new ductbank installation.
- Temporary road restoration work will be conducted afterwards.

Thank you for your patience as we work to improve transit infrastructure in Toronto.



For further information

Scan the QR code to visit [ttc.ca](https://www.ttc.ca) or contact Paul Tran, Community Relations, 647-461-5133, paul.tran@ttc.ca

