



ROSEDALE STATION EASIER ACCESS PROJECT

COMMUNITY UPDATE
PRE-CONSTRUCTION
September 2020



EASIER ACCESS – PROGRAM WIDE

- Committed to making all stations accessible by 2025
- 48 stations are currently accessible
- Working with the Advisory Committee on Accessible Transit on effective design
- Look for elevators, sliding doors, fare-gates and other features that will improve mobility for all transit riders



EASIER ACCESS PROJECT BACKGROUND

Stations made accessible in 2020:

- Wellesley
- Chester

Stations currently in construction:

- Wilson
- Bay
- Runnymede
- Keele
- Sherbourne
- Lansdowne
- College
- Donlands
- Yorkdale
- Dupont



Rosedale Station – Planning Process

Considerations for elevator locations:

- Maximize customer convenience
(shortest path from street level to subway platform and bus terminal)
- Maximize customer safety
- Minimize construction, community and ravine impacts
- Minimize property requirements
- Minimize project cost

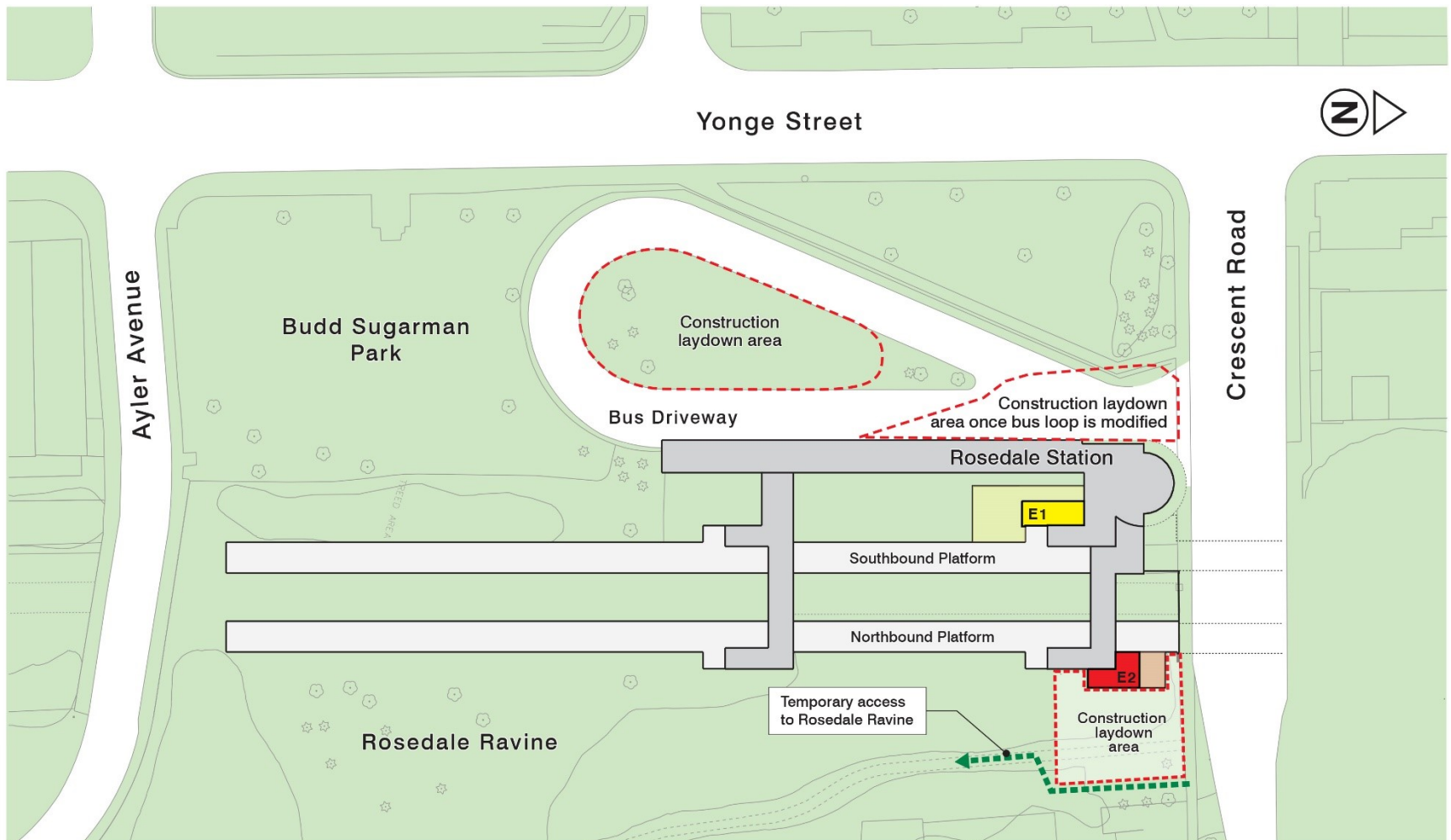


Rosedale Station – Consultation Process

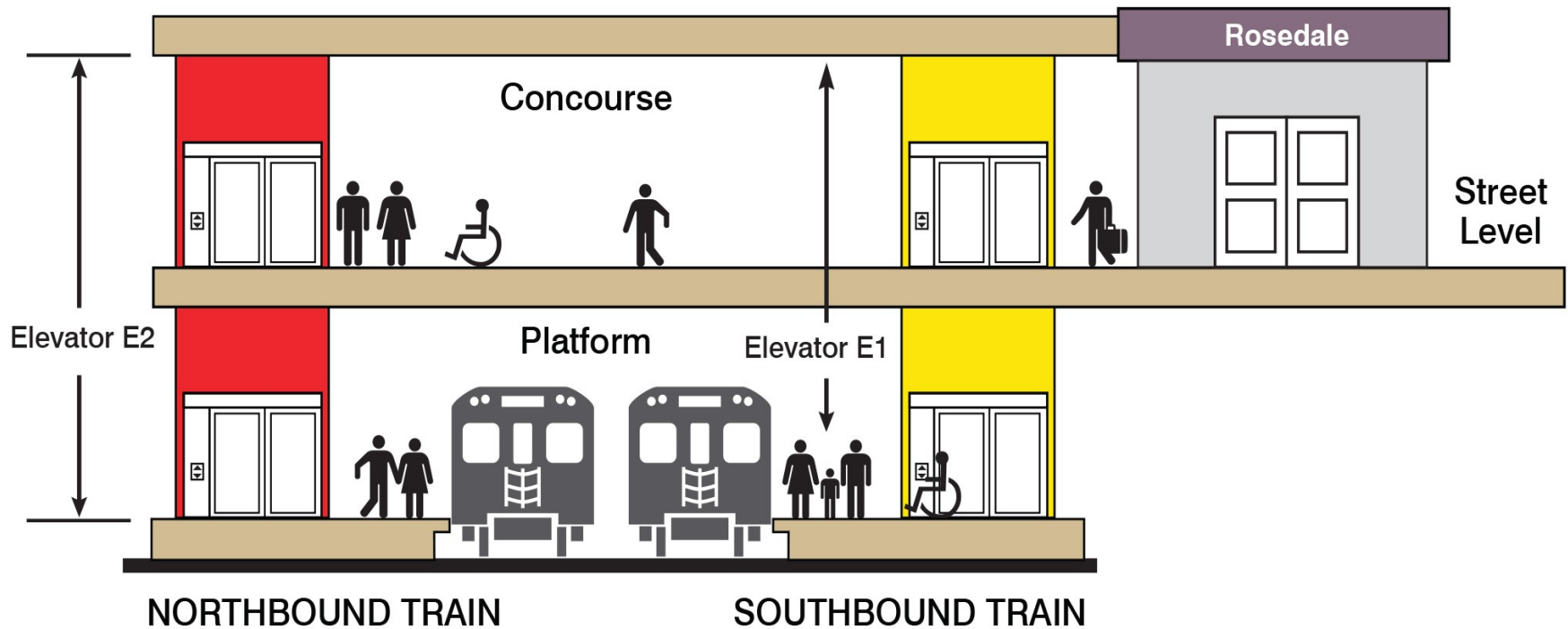
- TTC determined elevator locations in consultation with the Advisory Committee on Accessible Transit (ACAT)
- Consulted with Toronto and Region Conservation Authority (TRCA) and City of Toronto Urban Forestry in compliance with the Ravine and Natural Feature Protection By-law
- Consulted with City Planning and Urban Forestry, Parks and Recreation
- Informed by Heritage Conservation policies
- Consult local councillor and community



Rosedale Station - Plan View



Rosedale Station – Elevation Plan



Provides a barrier-free path to all levels of the station including installation of:

- Two elevators
- Improved signage
- CCTV security cameras

Rosedale Station – Elevator Rendering



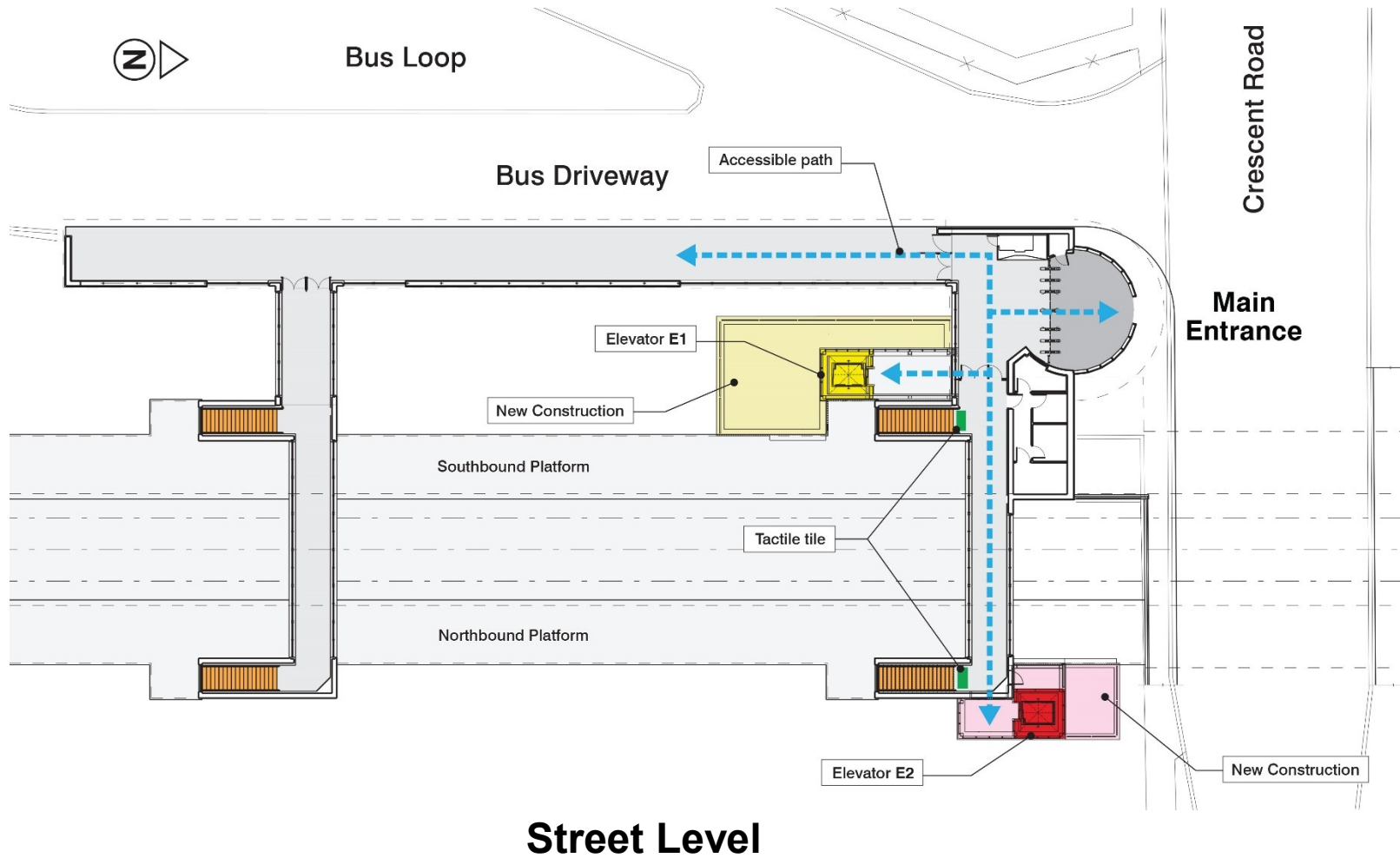
New Elevators (E2 and E1) - looking south west

Rosedale Station – Elevator Rendering

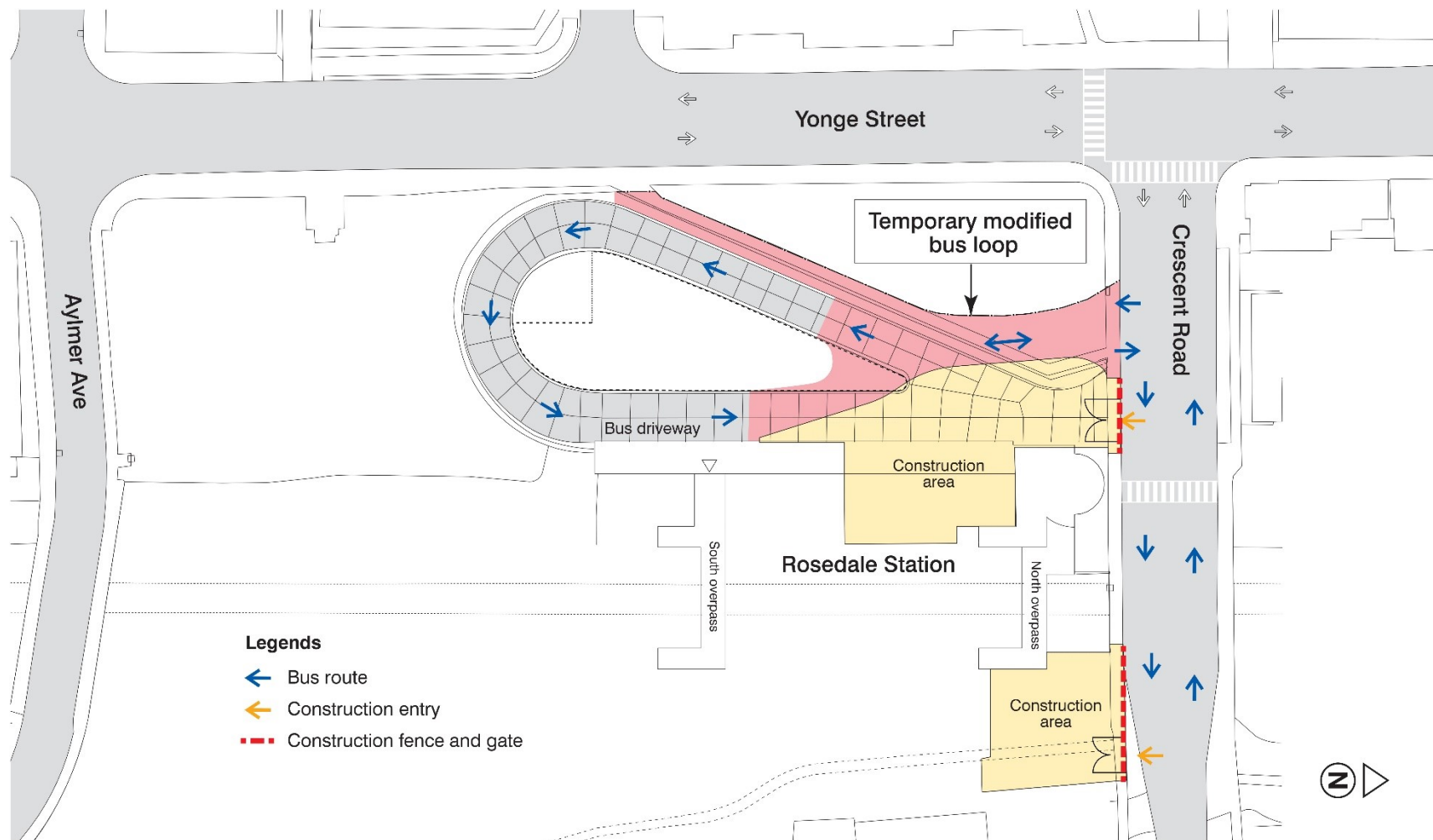


New Elevator (E2) - looking south east

Rosedale Station – Accessible Path



CONSTRUCTION ZONE



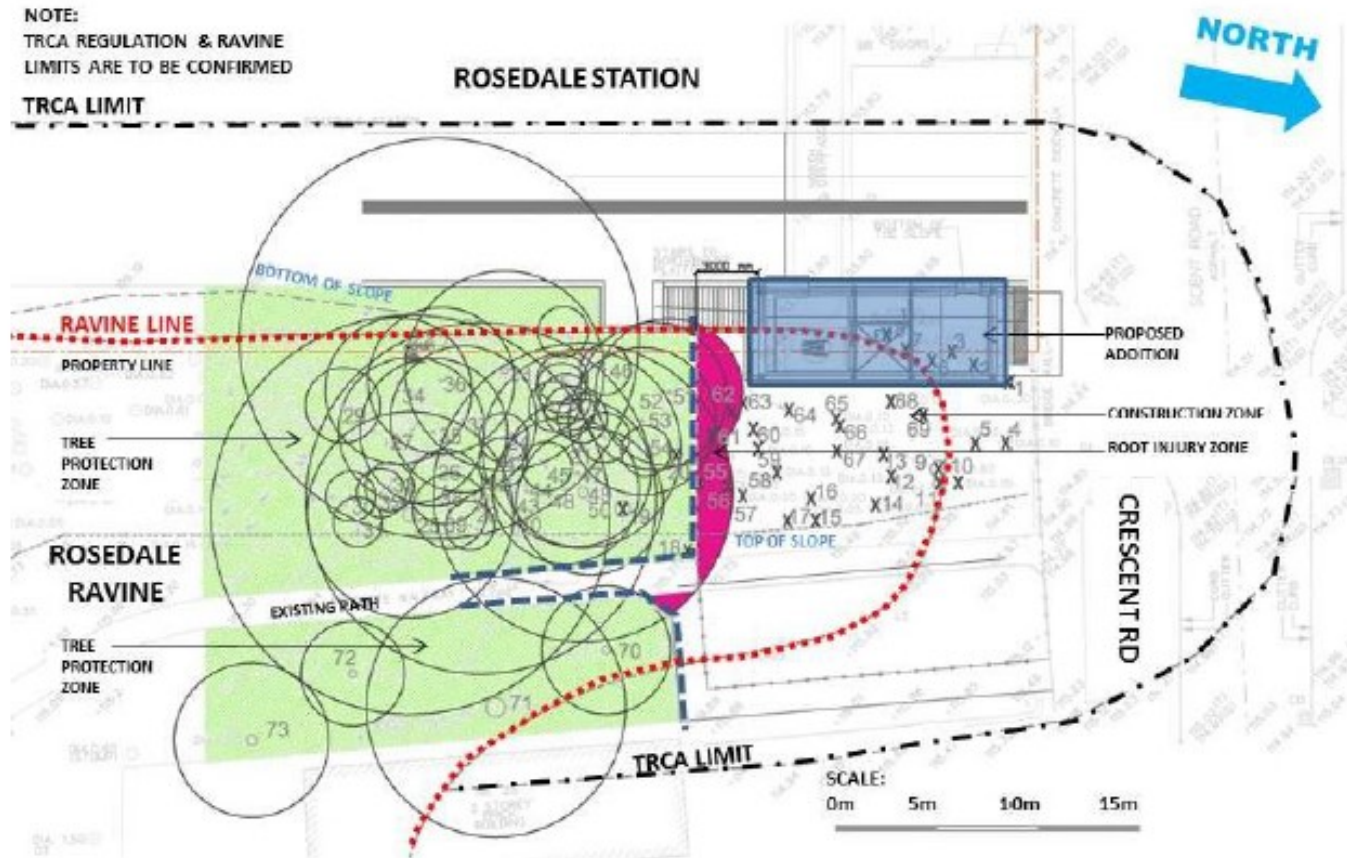
Rosedale Station – Ravine Protection

Impacts and Mitigation

- 43 trees/shrubs to be removed- some already scheduled for removal by City
- Six trees with a diameter greater than 30 cm-mostly invasive species including Manitoba Maple and Black Locust
- Trees will be replanted in accordance with TRCA and City of Toronto Ravine and Natural Feature Protection By-law requirements
- Ravine path will remain open but slightly rerouted during construction
- The bus loop will be modified and used as staging area- no impact to service



Rosedale Station – Tree Protection/Removals



Rosedale Station - Public Art

- Station upgrade work is subject to TTC Public Art Policy
- Art will be an important component of the design
- Request for proposals to be issued by end of year
- Art jury, including a local representative to select from submissions
- Art concept to be presented to community prior to award
- TTC Board to approve concept and award contract



TTC COMMITMENT DURING CONSTRUCTION

- Community Liaison to respond to all questions and advocate for the community
- Regular updates to project mailing list
- Single point of contact for the community
- Provide clear, accurate and timely construction information
- Post regular updates on a dedicated project page at projects.ttc.ca
- Maintain vehicular traffic on Crescent Blvd
- Ensure contractor complies with local bylaws



WHAT TO EXPECT DURING CONSTRUCTION

- Increased presence of construction vehicles
- Dust and noise depending on stage of work, although most of the activity will be contained within the site
- Delivery of construction material and equipment
- Primary access to the site will be from Yonge Street
- Construction will typically occur between 7 a.m. and 7 p.m., weekdays with some evening and weekend work when required



Rosedale Station - Schedule

- September 2020 Pre-construction community update I
- Q2 2021 Contract Award
- Q2 2021 Pre-construction community update II
- Q2-2021 Construction starts
- Q3-2025* Complete construction

- END-

