



Update: Granby Traction Power Substation and Duct Bank Replacement Project – Stage 1-3 continued: Occupation of one southbound and one northbound lane on Yonge Street adjacent to Turko Parkette. Two lanes of traffic remain open.

Timeline: Starting as early as Sunday, May 3, 2026 at 6 p.m., Stage 1-3 construction and restoration work will take place on Yonge Street adjacent to the Turko Parkette until mid-May. The two middle lanes on Yonge Street will be occupied for construction and restoration work. A southbound and northbound lane will remain open.

The construction on Sunday, May 3 will include overnight work until Monday, May 4. This work will include saw cutting into the road and the east sidewalk on Yonge Street.

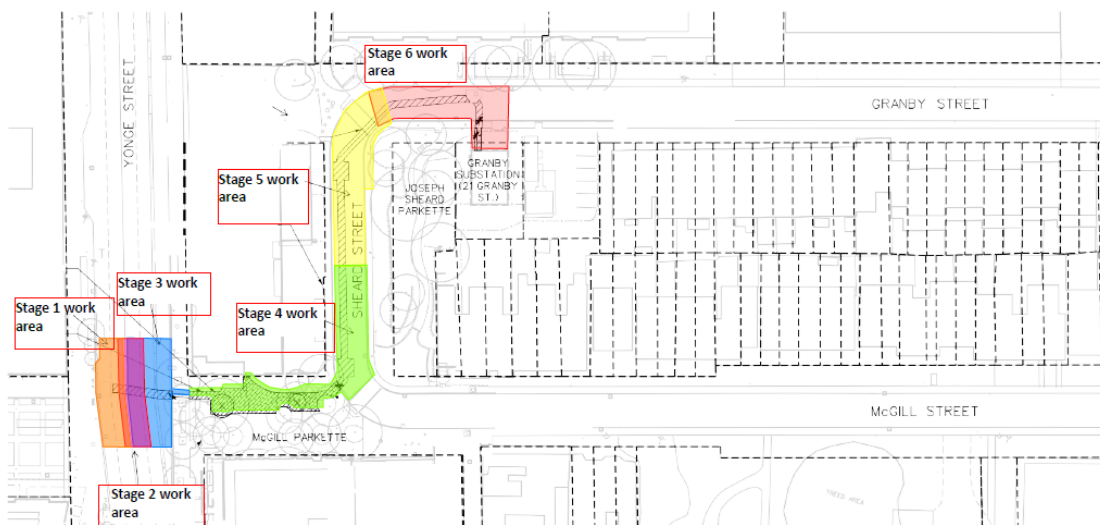
Granby Positive and Negative Feeders and Duct Bank Replacement construction is taking place in multiple stages. Stage 4-6 construction continues on sections of Sheard Street and Granby Street until June 2026. The contractor will be transitioning from Stage 6 to the Stage 5 configuration in the coming days.

** Content/timeline accurate at the time of printing. Pending weather, unforeseen site conditions, and events.*

What we are doing and why:

The Traction Power Upgrade program involves critical upgrades to TTC's traction power substations (TPSS), necessary to support future power demands of increased train service and expanded subway station capacity. To upgrade its TPSS infrastructure, TTC will be upgrading and installing new electrification and servicing infrastructure within the City's road right-of-way.

The TTC is going to construct a new underground traction power duct bank between Granby Substation and the Hayter Breaker Room near College Station. This duct bank will carry adequate spare capacity for future Traction Power Cables.



What to expect:

Temporary changes on Sheard St, McGill St, and Granby St to accommodate the Granby Traction Power Substation work.

During construction there will be changes to parking and traffic direction:

- Permit Parking will remain on Granby St and McGill St.
 - Green P parking will be removed and there will be no parking except by permit.
- The existing one-way movement of Granby St east, Sheard St south, and McGill St west will be converted to two-way movements during various phases of the project.
- Yield signs will be in place. Eastbound motorists will yield. Westbound motorists will have the right of way.
- Granby St and McGill St will be dead-end streets along sections of Sheard throughout stages 4-6 of construction.
- Construction and traffic management signage will be installed as per City standards.
- The two permit parking/Green P spaces on Granby St at Sheard St will be occupied.
- Vehicle access to these streets will remain.
- Work will typically take place Monday to Friday between 7 a.m. and 7 p.m. Some work on weekends between 9 a.m. and 7 p.m. may be required. For safety, overnight work may be required.
- Efforts will be made to keep disruption associated with noise and dust to a minimum
- Access to subway service will be maintained throughout construction.

Multiple stages of construction may take place in parallel

Road Closures on Yonge Street:

Stage 1: Southbound lanes on Yonge Street. Occupation of two southbound traffic lanes. Two lanes of traffic remain open (one southbound and one northbound). No impact to pedestrian clearway.

Stage 2: Through lanes on Yonge Street. Occupation of one southbound and one northbound lane. Two lanes of traffic remain open (one southbound and one northbound). No impact to pedestrian clearway.

Stage 3: Northbound lanes on Yonge Street. Occupation of two northbound lanes. Two lanes of traffic remain open (one southbound and one northbound). Sidewalk occupation on the east side of Yonge Street at McGill Parkette. Pedestrian clearway on Yonge Street to be maintained at all times.

Road Closures on Sheard Street and Granby Street:

Stage 4: McGill Parkette and Sheard Street. Closure of a portion of Sheard Street, occupation of a portion of McGill Parkette. Sidewalk closure on the west side of Sheard Street adjacent to occupation. Pedestrian clearway maintained on the east side of Sheard Street and through McGill Parkette.

Stage 5: Granby Street and Sheard Street. Closure of a portion of Sheard Street and partial sidewalk closures on the west and east sides of Sheard Street adjacent to occupation. Pedestrian clearway maintained around the occupation on the west side of Sheard Street and through Joseph Sheard Parkette on the east side of Sheard Street.

Stage 6: Granby Street. Closure of a portion of Granby Street and sidewalk closure on the and south side of Granby Street adjacent to occupation. Pedestrian clearway maintained on the north side of Granby Street.

For further information, please contact:



Clive Scott
Senior Community Liaison Officer
clive.scott@ttc.ca
437-219-5174
ttc.ca/granbysubstation

If you would like to receive updates on this project, please send an email so that you may be added to the contact group.